


Lot Description Start Bid Lot Description Start Bid

Saturday, January 14, 2017


5:00 p.m., Lots 539-1349

United States Singles

See lots 382, 384

539  **Stampless: 1852 Sutter Creek** *Web* **\$100**
 Sutter Creek ms. postmark paid 12 to Vermont, content dated Amador, Mar 4 1852 from gold miner to his wife, the Sutter Creek post office operated from June 1 1852- June 14 1852 in Calaveras County, then was transferred to Amador County, Williams lists this as a RF5, generally fine to very fine Est. \$150/180




544  **New York, N.Y., 1845 5¢ on Cover, #9X1a** **\$150**
 "AC" connected, marginal copy to just cutting at middle right, tied by black ms. cancel on folded letter to Boston, docketed Nov. 20, a very fine cover. Scott \$725 Est. \$200/250


Postmasters' Provisionals




540 F **New York, N.Y., 1845, 5¢ "Sperati" Forgery, #9X1** **\$140**
 "Mint", margins all around, Very Fine Est. \$200/250

541  **New York, N.Y., 1845, 5¢ Black, #9X1** **\$140**
 Used on piece, 4 margin copy with New York red c.d.s., Fine to Very Fine. Scott \$500+ Est. \$200/300




542  **New York, N.Y., 1845, 5¢ Black, #9X1** **\$100**
 Pos. 28, red grid cancel, good margins all around, "natural pre-print paper fold", Fine to Very Fine, 1991 PF cert. Scott \$500 Est. \$150/200


543  **New York, N.Y., 1845, 5¢ Black, #9X1a** **\$200**
 "AC" connected, nice margins all round, red NY circular datestamp, very fine. Scott \$700 Est. \$250/300

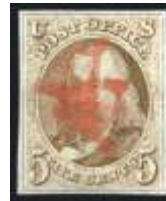
1847 Issue




545  **5¢ Red Brown, #1** **\$1,000**
 O.g., large to close margins all around, "slightly faded at the top", otherwise fine to very fine, 2016 PSE cert. Scott \$6,500 Est. \$1,500/2,000



546  **5¢ Red Brown, #1** **\$170**
 Red Hartford, CT town cancel, 4 nice margins all round, very fine. Scott \$575 Est. \$180/200



547  **5¢ Red Brown, #1** **\$150**
 Red cancel, balanced margins all round, very fine. Scott \$375 Est. \$170/200

548  **5¢ Red Brown, #1** **\$150**
 "Way 5" cancel, 3 margins, a very fine cancel. Scott \$875 Est. \$150/200

Lot Description Start Bid Lot Description Start Bid



549 ▲ **5c Red Brown, #1** **\$140**
 Good to large margins all round, tied on piece by complete Troy NY Feb 7 blue cds, very fine to extremely fine. Scott \$500+ Est. \$180/220



550 ○ **5c Red Brown, #1** **\$140**
 Red grid, good to nice margins all round, strong impression on reverse, very fine. Scott \$375 Est. \$140/160

551 ○ **5c Red Brown, #1** **\$120**
 Light red grid cancel, nice balanced margins all round, small mark on reverse, early impression, overall very fine. Scott \$375 Est. \$150/200

552 ○ **5c Red Brown, #1** **\$110**
 Red grid cancel, clear to sheet margin at left, fine to very fine, 2011 PSAG cert. Scott \$375 Est. \$140/180



553 ○ **5c Red Brown, #1** **\$100**
 Four margins with Blue "5" cancel, very fine, *Ex H.R. Harmer auction May 1957*. Scott \$475 Est. \$150/200

554 ○ **5c Red Brown, #1** **\$100**
 Full margins, light blue cancel, small tone spot on back, otherwise very fine. Scott \$375 Est. \$150/200

555 ○ **5c Red Brown, #1** **\$100**
 Clear to nice margins all round, blue circular cancel, fine. Scott \$440 Est. \$140/170



556 ○ **5c Red Brown, #1** **\$90**
 Four margins with black grid cancel, tiny thin, otherwise very fine, *Ex Saige auction November 1957*. Scott \$375 Est. \$120/150

557 ○ **5c Red Brown, Pair, #1** **\$270**
 Red grid cancels, nice to large margins all round, light horiz. crease at top, lovely very fine appearance. Scott \$850 Est. \$300/350

558 ☒ **5c Red Brown on 1848 Cover, #1** *Web* **\$150**
 Full to large margins tied by blue "Paid" cancel with Jan 25 Philadelphia blue cancel to Delaware on folded letter sheet, some soiling, otherwise very fine. Scott \$500 .. Est. \$200/250

559 ☒ **5c on 1848 Cover, #1** *Web* **\$100**
 Close to margins all round, tied by ms. cancel on folded letter to Baltimore, docketed New York Dec 9. Scott \$450 Est. \$140/180



560 ★ **5c Dark Brown, #1a** **\$1,800**
 Full o.g., nice margins 3 sides, fine and scarce, 1975 PF cert. Scott \$8,750 Est. \$1,800/2,000



561 ○ **5c Dark Brown, #1a** **\$280**
 Blue grid, good to large margins all round, very fine, 2001 PSE cert. Scott \$840 Est. \$300/350

562 ○ **5c Dark Brown, #1a** **\$250**
 Pos. 10R, red grid cancel, 4 close to large margins all round, very fine, 2015 PF cert. Scott \$800 Est. \$250/300

563 ○ **5c Dark Brown, #1a** **\$200**
 Blue grid, good to large margins all round, very fine. Scott \$840 Est. \$250/300

Lot Description Start Bid Lot Description Start Bid



- 564 ○ **5c Dark Brown, #1a** **\$170**
Red cancel, excellent margins all round, very fine. Scott \$800
..... Est. \$200/250
- 565 ○ **5c Dark Brown, #1a** **\$140**
Blue cancel, nice margins all round, very fine. Scott \$840
..... Est. \$200/250
- 566 ○ **5c Orange Brown, #1b** **\$150**
Red grid, tiny filled thin left margin, good to nice margins all
round, fine to very fine. Scott \$750 Est. \$250/300



- 567 ☒ **5c Orange Brown on 1850 Cover, #1b** **\$140**
Touching to nice margins, blue "5" and Syracuse, NY
cancels, tied by vert fold through 5¢, to Albany, fine. Scott
\$850 Est. \$200/250



- 568 F **10c Black, "Sperati" Forgery, #2** **\$200**
"Mint o.g.", nice margins all round, very fine, 1998 APS
cert. Est. \$250/300
- 569 ○ **10c Black, #2** **\$400**
Red grid cancel, pos. 2L1, excellent margins all round, sharp
impression, immaculate and very fine. Scott \$825
..... Est. \$400/500

We are now accepting consignments for the August APS auction in Richmond, VA.



- 570 ○ **10c Black, #2** **\$300**
Just clear to large margins all round, blue cancel, fine to very
fine. Scott \$875 Est. \$400/500
- 571 ○ **10c Black, #2** **\$300**
Large to just touching, red "10" cancel, fine to very fine, *Ex*
H.R. Harmer auction January 1958 . Scott \$1,075
..... Est. \$400/500



- 572 ○ **10c Black, #2** **\$300**
Nice four margin copy with blue cancel, very fine, 1994 APS
cert. Scott \$875 Est. \$400/500
- 573 ○ **10c Black, #2** **\$300**
Red grid, large margins to touching at top right, fine overall.
Scott \$825 Est. \$300/350
- 574 ○ **10c Black, #2** **\$150**
Red grid, clear to large margins all round, light toning on
reverse, pressed out horiz. crease, very fine appearance. Scott
\$825 Est. \$250/300



- 575 ☒ **10c Black on 1849 Cover, #2** **\$300**
Large to close at bottom tied by red grid cancel with 11 Jan
Boston red cancel to Philadelphia PA on folded wrapper not
affecting stamp, otherwise very fine. Scott \$1,050
..... Est. \$400/500

Lot Description Start Bid

1875 Reproductions of the 1847 Issue

- 576 P **Set, Plate Proofs on Card, #3P4-4P4** *Web* **\$150**
Very nice margins all round, 5¢ slight soiling on reverse, overall very fine. Scott \$400 Est. \$200/250
- 577 P **Set, Plate Proofs on Card, #3P4-4P4** *Web* **\$100**
Nice margins all round, very fine. Scott \$400 . Est. \$150/200



- 578 (★) **5c Red Brown, #3** **\$350**
Ungummed, clear to just touching lower left, fine. Scott \$850 Est. \$350/400
- 579 (★) **5c Red Brown, #3** **\$300**
Ungummed, “stitch watermark”, nice to large margins all round, very fine, 1980 PF cert. Scott \$850 Est. \$400/500



- 580 (★) **5c Red Brown, #3** **\$300**
Ungummed, clear to nice margins all round, very fine, *Ex. H.R. Harmer auction January 1959*. Scott \$850 Est. \$400/500
- 581 (★) **5c Red Brown, #3** **\$300**
Ungummed, close to large margins all round, fine to very fine, 1992 PF cert. Scott \$850 Est. \$400/500
- 582 (★) **5c Red Brown, #3** **\$250**
Ungummed, large margins all round except for close upper right, fine to very fine, 1990 PF cert. Scott \$850 Est. \$300/400



- 583 (★) **10c Black, #4** **\$400**
Ungummed, four full margins, nice copy, Grade 85 very fine to extremely fine, 2016 PSAG cert. Scott Stamp Values \$1,250 Est. \$600/700
- 584 (★) **10c Black, #4** **\$400**
Ungummed, four full margin, signed on back, very fine, 1984 PF cert. Scott \$1,050 Est. \$600/700

Lot Description Start Bid



- 585 (★) **10c Black, #4** **\$400**
Ungummed, nice margins all round, very fine. Scott \$1,050 Est. \$600/700
- 586 (★) **10c Black, #4** **\$400**
Ungummed, balanced margins all around, probable grade 85 very fine to extremely fine. Scott \$1,050 Est. \$500/600
- 587 (★) **10c Black, #4** **\$400**
Ungummed, nice margins all round, light crease in top margin, fine to very fine. Scott \$1,050 Est. \$500/600

1851-57 Imperforate Issue



- 588 ○ **1c Blue, Type Ib, #5A** **\$1,000**
Cds, marginal copy to touching at bottom, “genuine with a small repair in the top margin and small thin spots”, rare, otherwise fine to very fine, 1996 PF cert. Scott \$12,000 Est. \$1,500/2,000



- 589 ☒ **1c, Types Ib & II on Cover, #5A, 7** **\$2,500**
Pos. 4, 14R1e, large margins to cutting, 5A (top) “horiz. crease...bottom with a natural paper inclusion”, tied on prices current with complete blue Apalachicola, FL town cancel, a very fine cover, 1993 PF cert. Scott \$13,000 (used) Est. \$2,500/3,000

"Web" indicates that the image(s) will be found on our website, www.harmershau.com.

Lot Description Start Bid Lot Description Start Bid



590 ○ **1c Blue, Type Ia, #6** **\$1,400**
 Pos. 98L4, neatly canc'd., large margins 3 sides, cutting at bottom, "pressed out corner crease", very fresh, attractive copy, 1999 APS cert. Scott \$10,500 Est. \$2,000/2,500



591 ○ **1c Blue, Type Ia, #6** **\$1,000**
 1857 black cds., 3 clear margin to touching at bottom, close on top, "small thin spot at top", otherwise fine to very fine, 1977 PF cert. Scott \$10,500 Est. \$1,400/1,800



592 ○ **1c Blue, Types II & IIIa Pair, #7, 8A** **\$140**
 Margins to touching, pen and blue "5" cancel, "pressed out crease, partially rebacked", fresh, 1991 APS cert. Scott \$1,500 Est. \$200/300



593 ○ **1c Blue, Type IIIa, #8A** **\$170**
 Used, cutting to huge margins at bottom (showing portion of stamp), 2008 PF cert. Scott \$825 Est. \$170/200



594 ○ **1c, Type IIIa, Strip of 3, #8A** **\$350**
 Lightly canc'd, pos. 37-39R4, margins to cutting, "mild crease", fresh, 2013 Weiss cert. Scott \$3,600 + (singles) Est. \$500/700



595 ○ **3c Orange Brown, Type I, #10** **\$80**
 Light red grid cancel, very fine. Scott \$205 Est. \$120/150



596 ○ **3c Brownish Orange Brown, Type II, #10A** **\$80**
 Pos. 38R2E, balanced margins all round, "light wrinkle", very fine, 2010 PSAG cert. Scott \$160 Est. \$100/120



597 ☒ **3c "Copperish" Brown, Type II on Cover, #10A** **\$140**
 Pos. 78L2E, margins to cutting, tied by black Paid and red Boston Nov. 10, 1851 (docketed) cds to N.H., vert fold, very fine, 2016 PSAG cert. Scott \$1,100, *rare shade* Est. \$200/250

598 ☒ **3c Deep Orange Brown, Type II on Cover, #10A** **\$60** *Web*
 Pos. 17LO, just touching to large margins all round, tied by blue "Keene N.H." cds, couple cover wrinkles, overall very fine, 2016 PSAG cert. Scott \$240+ Est. \$100/130

599 ☒ **1852 Waterway Postmark on Louisville & Cincinnati Mail Line Cover, #11** **\$150** *Web*
 3c on folded letter sheet tied with Dec 4 black Louisville & Cincinnati Mail Line postmark to Cincinnati, tears on back, otherwise fine to very fine. Towle #O-21-c3 .. Est. \$200/300



600 ☒ **3c Type II on "From Noisy Carrier's/Mail/77 Long Wharf S.F. Cal." Cover, #11A** **\$150**
 Franked with horizontal pair, small tear in left stamp, tied by Mar 31 San Francisco, Cal cds to Keen, New Hampshire on small green bordered cover Est. \$200/300

Lot Description Start Bid Lot Description Start Bid

601 ☒ **3c Orange Brown, Type II on Cover, #11A** *Web* **\$60**
 Pos. 2L2L, top marginal copy, extremely fine tied on cover by Jacksonville black cds, to Penn., Grade 95 a very fine cover, 2016 PSAG cert. Scott Stamp Values \$225 + (stamp) *unlisted shade* Est. \$100/140



609 (★) **10c Green, Type I, #13** **\$1,300**
 Unused, marginal copy with clear to large margins all round, very fresh, fine to very fine and attractive, 1979 PF cert. Scott \$8,500 Est. \$1,500/1,800

602 (★) **5c Red Brown, #12** **\$900**
 Unused, margins to touching, "two tiny scrapes in bottom margin", scarce, very fresh color, fine overall, 2012 Weiss cert. Scott \$11,000 Est. \$1,200/1,400



603 ○ **5c Red Brown, #12** **\$500**
 New Orleans cancel, large margins all round, very fresh, choice very fine, signed Brun, 2001 PSE cert. Scott \$700 Est. \$500/600

610 ○ **10c Green, Type I, #13** **\$500**
 Corner red and black cancel, clear to large margins all round, very fresh, fine to very fine, 2001 APS cert. Scott \$850 Est. \$500/600

604 ○ **5c Red Brown, #12** **\$200**
 4 margins (1 tight), neat town cancel, very fine, *Ex. Harmer Rooke auction October 1956*. Scott \$700 Est. \$250/300

611 ○ **10c Green, Type I, #13** **\$100**
 Used, tiny thin, otherwise very fine, *Ex Samuel Paige December 1957*. Scott \$850 Est. \$150/200



612 ★ **10c Green, Type III, #15** **\$900**
 Full o.g., balanced margins all round, "small sealed margin tear at right", very fine appearance, 2000 PSE cert. Scott \$5,000 Est. \$900/1,000

605 ○ **5c Red Brown, #12** **\$170**
 Lightly canceled, large margins to just clear at top, fine to very fine. Scott \$700 Est. \$170/200

606 ○ **5c Red Brown, #12** **\$150**
 Lightly canceled, large margins to just touching at left, fine overall. Scott \$700 Est. \$150/200

607 ○ **5c Red Brown, #12** **\$130**
 Boston cds, 3 large margins, lower right corner crease, fine overall. Scott \$700 Est. \$150/200



613 ★ **12c Gray Black, #17** **\$750**
 "Slightly dist. o.g.", marginal copy with margins close on two sides, 1999 PF cert. Scott \$6,250 Est. \$750/900

608 ○ **5c Red Brown, Pair, #12** **\$150**
 "PAID" cancel, margins to cutting, Fine. Scott \$1,650 Est. \$250/300

614 (★) **12c Gray Black, Pair, #17** **\$650**
 Unused, large margins to touching at right, "top stamp with thin at upper left", excellent color and scarce, 2010 Weiss cert. Scott \$5,000 + (singles) Est. \$1,000/1,400

Lot	Description	Start Bid	Lot	Description	Start Bid
615	<p>☒ 12¢, Pair on 1855 Cover, #17 <i>Web</i> \$100 Ample to large margins tied by red grid cancel and April 18 New York with paid 1855 red cancel to London from NY, fold not affecting stamps, generally fine to very fine, 2015 Weiss cert. Scott \$780 Est. \$150/250</p>				



1857-61 Perforate 15½ Issue



616	<p>★ 1¢ Blue, Type I, #18 \$1,000 O.g., sound, very fine and attractive, 2000 PF cert. Scott \$2,100 Est. \$1,000/1,200</p>
617	<p>○ 1¢, Types I & II, Strip of 3, #18, 20 (2) <i>Web</i> \$150 Vert., top and middle copies type II, middle type I, double transfer variety, "middle copy with short perf", fine, 2016 PSE cert. Scott \$1,225+ Est. \$200/250</p>

621	<p>★ 1¢ Blue, Types III, IIIa, Pair, #21, 22 \$3,750 Pos. 61-71L4 (type III, IIIa) vert. marginal with part imprint, "dist. part o.g.", "some minor perf toning", some perf discs not punched out, overall fresh and rare, very attractive, 2009 PSE cert. Scott \$22,500 .. Est. \$4,000/5,000</p>
622	<p>☒ 1¢, Type IIIa on Cover, #22 <i>Web</i> \$100 "Pulled corner perf at top right", well centered, tied by attractive blue "AUG 17 1858 Chambersburg Pa" cds, reduced at left, overall very fine. Scott \$550 Est. \$120/140</p>



618	<p>☒ 1¢, Type I on Carrier Cover, #18, 26 \$150 Sound fine copy, tied with 3¢ (#26), from NY to Boston, a very fine cover. Scott \$700+ Est. \$250/300</p>
-----	---



623	<p>☒ 1863 (Circa) Lake MI Cover, #24 \$400 3¢ tied by manuscript cancel, docketed May 7 on left to Orleans Co. N.J., torn at bottom right, generally fine, <i>rarity 9</i> Est. \$500/600</p>
-----	--



619	<p>○ 1¢ Blue, Type Ia, #19 \$700 Pos. 94L4, black c.d.s., "small perf faults at left", 1997 PSE cert. Scott \$9,000 Est. \$900/1,200</p>
620	<p>(★) 1¢ Blue, Type III, #21 \$700 Unused, fresh, "tiny corner margin crease at top left", 2016 PF cert. Scott \$6,000 Est. \$900/1,100</p>



624	<p>★ 3¢ Rose, Type I, #25 \$700 O.g., nicely centered, overall very fine, 1995, 2009 PF certs. Scott \$2,750 Est. \$800/1,000</p>
625	<p>★ 3¢ Rose, Type I, #25 \$400 "Part. o.g.", centered, fine to very fine, 1990, 2003 PF certs. Scott \$2,750 Est. \$450/550</p>

Lot Description Start Bid Lot Description Start Bid



626 **3c Rose, Type I, Block of 4, #25** \$650
 Ms. cancels, "tiny piece out of upper left corner of upper left stamp", usual centering, scarce, fine overall, 2014 Weiss cert. Scott \$7,000 Est. \$700/800



631 **5c Indian Red, Type I, #28A** \$1,500
 Neat cancel, well centered, sharp color, very fine. Grade 80, 2014 PSAG cert. Scott \$3,500 Est. \$2,000/2,500



632 ★ **5c Orange Brown, Type II, #30** \$200
 Large part o.g., "tiny this spot", nice centering for this, excellent color, lovely very fine appearance, 1997 APS cert. Scott \$1,200 Est. \$250/350



627 **3c Rose, Type II, #25A** \$150
 Clipped perfs, sound, tied by complete Northampton Ms. DEC 16 to Springfield Mass., a very fine cover. Scott \$1,000 Est. \$250/300

633 (★) **5c Orange Brown, Type II, #30** \$100
 Unused, short perf at top, excellent color, fine. Scott \$500 Est. \$100/130



634 ★ **10c Green, Types II & IV, #32, 34** \$4,500
 Pos. 2, 3R1, "dist. o.g.", se. at bottom, centered left, excellent color, extremely rare, 1985 PF cert. Scott \$60,000 Est. \$4,500/5,000

628 ★★ **3c Dull Red, Type III, #26** \$200
 N.h., marginal copy, excellent centering, extremely fine, 2003 PSE cert. Scott \$65+ Est. \$200/250



629 **5c Brick Red, Type I, #27** \$160
 May 26 cds, "small thin spot...small corner crease", fresh, 2014 PSAG cert. Scott \$1,600 Est. \$200/250

635 **10c Green, Type IV, #34** \$150
 Reperfed, perf issues at bottom, blue cds, still missing from most collections, otherwise fine. Scott \$2,200 . Est. \$200/250

630 **5c Red Brown, Type I, #28** \$150
 Very light cancel, couple perf faults, fresh. Scott \$1,100 Est. \$150/200

636 **12c, Plate I Pair on Cover to England, #36** *Web* \$150
 Fine with minor tone spots tied by black cds on folded letter to London with red receiving cancel May 7th 1850, fine to very fine appearance. Scott \$900 Est. \$200/300

Lot Description Start Bid



637 ★ **24¢ Gray Lilac, #37** **\$200**
L.h., very fresh, usual centering, fine for this, 2002 PSE cert. Scott \$1,450 Est. \$250/300

638 ★ **24¢ Gray Lilac, #37** **\$100**
O.g. (h.r.), "small hinge thins", generally fine, 2016 PSE cert. Scott \$1,450 Est. \$150/200

639 ★ **24¢ Gray Lilac, #37** **\$100**
O.g. (h.r.) with paper hinge, fine, 2016 PSE cert. Scott \$1,450 Est. \$150/200



640 ★ **30¢ Orange, #38** **\$1,000**
Full o.g., fine to very fine, 1997 PF cert. Scott \$2,150 Est. \$1,000/1,200



641 ★ **30¢ Orange, #38** **\$450**
O.g., pos. 52L1, fine for this, 1979 PF cert. Scott \$2,150 Est. \$450/550



642 P **90¢ Dark Violet Brown, Trial Color Plate Proof on Wove, #39TC5g** **\$90**
"Mounted on Non-Contemporary bond paper, the proof with a small tear at tip the "T" in postage and a small repair at lower left", otherwise fine to very fine, 2008 PF cert. Scott \$625 Est. \$120/150

643 (★) **90¢ Blue, #39** **\$200**
Unused, fine, 2016 PSAG cert. Scott \$1,200 ... Est. \$300/400

Lot Description Start Bid

644 P **1857-60 (1875 Reprints) Set, Plate Proofs on Card, #40P4-47P4** **\$250**
Nice margins all round, a very fine set. Scott \$580 Est. \$300/350



645 (★) **1857-60 (1875 Reprint), 5¢ Orange Brown, Reprint, #42** **\$350**
Ungummed, "clipped perfs at upper right" (usual), excellent color, well centered, overall very fine, 2009 PSAG cert. Scott \$1,250 878 issued Est. \$500/600

646 (★) **1857-60 (1875 Reprint), 24¢ Blackish Violet, Reprint, #45** **\$250**
Ungummed, reperfed left and usual short perfs, fresh, scarce. Scott \$3,250 479 issued Est. \$350/450



647 O **1861, 10¢ Dark Green, First Design, #62B** **\$500**
Cogwheel cancel, nice shade, fine for this, 1984 PF cert. for pair. Scott \$1,600 Est. \$500/600

1861-62 National Bank Note Issues



648 P **Set Complete, Plate Proof on Card, #63P4-72P4** **\$425**
All with excellent margins all round, very fine to extremely fine. Scott \$1,070 Est. \$550/650

649 O **3¢ Pink, #64** **\$200**
Centered cancel, 1981 PF cert. Scott \$700 Est. \$250/300

650 ☒ **1865 (Circa) Wells Fargo Cover to Pennsylvania** **\$150**
3¢ env. with unlisted Union Pacific RR Nov 14th cancel, docketed with manuscript Nov 5th in upper left, reduced at right, otherwise fine Est. \$200/250

Lot Description Start Bid Lot Description Start Bid



651 (★) **5c Buff, #67** **\$2,500**
 Unused, excellent color, sound, fine to very fine, 1993 PF cert. Scott \$10,500 Est. \$2,500/2,800



658 ★ **24c Red Lilac, #70** **\$650**
 "Part o.g.", centered right fresh, fine overall, 1976 PF cert. Scott \$3,000 Est. \$650/750



659 P **90c Green, Trial Color Large Die Proof, #72TC1am** **\$200**
 In green, margins all around, tiny thin, nice color, Fine and scarce. Scott \$2,500 Est. \$250/300



652 ○ **5c Buff, #67** **\$200**
 Strong "Paid" cancel, excellent color, immaculate and very fine. Scott \$825 Est. \$300/400

653 ○ **5c Buff, #67** **\$200**
 Attractive Paid cancel, sound, fine and attractive, 1984, 1990 PF certs. Scott \$825 Est. \$200/250

654 ○ **5c Buff, #67** **\$100**
 Cogwheel cancel, short perf at top, reperfed at bottom, fine to very fine appearance. Scott \$800 Est. \$150/200



655 ★ **12c Black, #69** **\$300**
 "Part o.g.", centered left, fresh, fine, 1987 PF cert. Scott \$1,800 Est. \$300/350



656 ★ **12c Black, #69** **\$200**
 O.g., upper left corner reperfed, fine to very fine appearance. Scott \$1,800 Est. \$200/250

657 ○ **12c Black, #69** **\$180**
 Red and black SF cogwheel cancel, very nice centering, fresh, very fine to extremely fine, 1993 PSE cert. Scott \$100 Est. \$180/200



661 ☒ **1864 Great Central Fair For the Sanitary Commission Cover** **\$250**
 Used on 2c entire Black Jack (#U46), cancelled by target and "Philada. Pa. May 6, 1864" circular datestamp to Orwigsburgh Pa., small tear at bottom, faint file fold affects design, otherwise Very Fine, *Ex Burrows, see unused example lot 1248, realized \$1150 in 2003 auction, rare Sanitary Fair design on Black Jack stationery* Est. \$400/500



662 (★) **1862, 5c Red Brown, #75** **\$750**
 Unused, sound, rich color, fine to very fine, 2010 PF cert. Scott \$2,100 Est. \$750/900

Lot Description Start Bid Lot Description Start Bid



- 663 ★ **1866, 15c Black, #77** **\$400**
Dist. large part o.g., couple of perf faults incl. gum perf tip, sharp impression. Scott \$4,750 Est. \$500/600
- 664 ★ **1863, 24c Grayish Lilac, Pair, #78a** **\$350**
Full o.g., "right stamp tiny tone spot in top margin", typical centering, very fresh, scarce, 2015 Weiss cert. Scott \$5,800 + (singles) Est. \$500/600

- 670 ★ **1c Blue, E. Grill, #86** **\$1,300**
Full o.g., centered right, fresh, fine to very fine, signed Bloch, photocopy 1971 Friedl cert. for block. Scott \$3,250 Est. \$1,300/1,600

1867 Grilled Issues



- 665 ○ **3c Rose, A. Grill, #79** **\$100**
Used, "small faults" (typical), decent centering for this, fine appearance, 2016 PSE cert. Scott \$1,500 Est. \$150/200
- 666 ○ **3c Rose, C. Grill, #83** **\$100**
Used, "reperfed at left", fine overall, 2016 PSE cert. Scott \$1,100 Est. \$150/200
- 667 ○ **3c Rose, D. Grill, #85** **\$200**
Used, "reperfed at right", well centered, lovely very fine appearance, 1992 PF cert. Scott \$1,050 Est. \$250/350

- 671 ★ **12c Black, E. Grill, #90** **\$600**
L.h., centered right, fresh, fine, 1980 PF cert. Scott \$5,000 Est. \$600/800
- 672 ★ **12c Black, E. Grill, #90** **\$400**
O.g., centered right, fresh, just fine. Scott \$5,000 Est. \$400/500



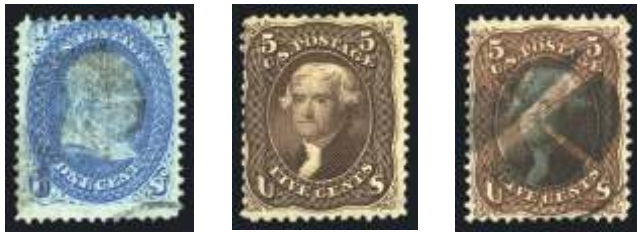
- 668 ○ **3c Rose, D. Grill, #85** **\$200**
Black target cancel, "purple ink spot", sound, fine for the issue, 2002 PSE cert. Scott \$1,050 Est. \$200/250
- 669 ○ **12c Intense Black, Z. Grill, #85E** **\$350**
Black cork cancel, centered right, sound, fine, 2001 PSE cert. Scott \$2,500 Est. \$350/400

- 673 ★ **15c Black, E. Grill, #91** **\$2,400**
L.h., decent centering for this, fine for the issue, 1998 PF cert. Scott \$12,500 Est. \$2,400/2,800



- 674 (★) **1c Blue, F. Grill, #92** **\$300**
Unused, fresh, fine, 1994 PF cert. Scott \$1,000 Est. \$300/400

Lot Description Start Bid Lot Description Start Bid



- 675 ○ **1c, F. Grill, Double Grill, One Split, #92 var.** **\$150**
Used, "closed tear", very scarce, 2005 PF cert.
..... Est. \$200/250
- 676 ★ **5c Black Brown, F. Grill, #95a** **\$250**
Part o.g. (h.r.), centered left, pulled perf, rich color. Scott \$4,750 Est. \$350/450
- 677 ○ **5c Brown, F. Grill, #95** **\$250**
Cork cancel, rich color, fine, 2012 PF cert. Scott \$900
..... Est. \$250/300



- 678 ★ **10c Yellow Green, F. Grill, #96** **\$300**
"Large part o.g.", fine, 2004 PF cert. Scott \$2,750
..... Est. \$450/550
- 679 ★ **24c Gray Lilac, F. Grill, #99** **\$800**
Full o.g., very light "diagonal crease at top left", typical centering, fine, photocopy of 2003 PF cert. for block. Scott \$8,500 Est. \$800/900
- 680 ○ **24c Gray Lilac, F. Grill, #99** **\$200**
Used, sound, fine, 1987 PF cert. Scott \$1,600 Est. \$300/400



- 681 ○ **24c Gray Lilac, F. Grill, #99** **\$150**
Used, "small defects", fine appearance, 2002 PSE cert. Scott \$1,600 Est. \$150/200
- 682 (★) **30c Orange, F. Grill, #100** **\$350**
Unused, perfs touch at left, very fresh, just fine, 2018 PSE cert. Scott \$3,500 Est. \$450/550
- 683 ○ **30c Orange, F. Grill, #100** **\$500**
SF cogwheel cancel, sound, fresh, fine to very fine for this. Scott \$950 Est. \$500/600



- 684 ○ **90c Blue, F. Grill, #101** **\$350**
Used, corner perf creases, fine. Scott \$2,250 .. Est. \$350/400
- 685 ○ **90c Blue, F. Grill, #101** **\$200**
Used, added perf lower left, reperfed, centered, fine to very fine appearing. Scott \$2,250 Est. \$300/400



- 686 ★ **1875, 24c Dark Violet, Re-Issue, #109** **\$3,500**
"Toned" o.g., very fresh on face and excellent centering, overall very fine, one of the nicest looking copies we have seen, 2001 PF cert. Scott \$5,750, 346 issued Est. \$3,500/4,000

1869 Pictorial Issue

- 687 P **Set Complete, Plate Proofs on Card, #112P4-122P4** **Web \$400**
Excellent margins all round, 6¢ deep shade, a very fine set. Scott \$1,015 Est. \$500/600



- 688 ★ **1c Buff, #112** **\$325**
O.g. (h.r.), nice centering, almost very fine, 1992 PF cert. Scott \$650 Est. \$325/375



- 689 ☒ **1c on 2c Black on Orange Entire, #112; U56** **\$150**
Cancelled by Leaf cork cancel and tied by "Louisville Ky. Sep. 1" circular datestamp on 2c to the Society of Shakers in South Union Ky., 1869 company handstamp at upper left, Very Fine, unusual Est. \$250/300

Lot Description Start Bid Lot Description Start Bid



- 690 ★ **6c Ultramarine, #115** **\$400**
O.g. (h.r.), centered right, fine. Scott \$2,750+ ... Est. \$400/500
- 691 ○ **6c Ultramarine, #115** **\$220**
Cork cancel, well centered, very fine to extremely fine, 1997 PF cert. Scott \$225 Est. \$220/250
- 692 ○ **6c Ultramarine, #115** **\$70**
"Cancel lightened", excellent centering, very fine unused appearance, 1987 PF cert. Scott \$225 Est. \$100/140



- 693 (★) **10c Yellow, #116** **\$200**
Unused, excellent color, fine, 2010 Weiss cert. Scott \$800 Est. \$200/250

- 694 ☒ **10c Pair on Cover to Cuba, #116** *Web* **\$100**
Se. at left, sound, tied by Philadelphia cancels to Santiago, docketed Dec 17, 1869, "toned areas, mended flap", scarce, 2003 APS cert. Est. \$150/200



- 695 ★ **15c Brown & Blue, Type I, #118** **\$1,400**
O.g. (h.r.), reperfed, nicely centered, handsome very fine appearance. Scott \$9,500 Est. \$1,400/1,700



- 696 ○ **15c Brown & Blue, Type I, #118** **\$150**
Used, nicely centered, overall very fine. Scott \$850 Est. \$200/250
- 697 ○ **15c Brown & Blue, Type I, #118** **\$150**
Used, "diagonal light crease", centered, attractive very fine appearance, 2014 PSE cert. Scott \$850 Est. \$150/200



- 698 ★ **30c Ultramarine & Carmine, Pair, #121** **\$2,000**
O.g. (h.r.), hinge reinforcing (possibly rejoined), fresh, fine. Scott \$9,000 (as singles) Est. \$2,000/2,400



- 699 ○ **30c Ultramarine & Carmine, #121** **\$280**
Used, sound, very fine, 2016 PSE cert. Scott \$425 Est. \$280/300



- 700 ★ **30c Ultramarine & Carmine, Without Grill, #121a** **\$1,500**
O.g., "small diagonal crease at left, gum soaked perfs at top", scarce, 2012 PF cert. Scott \$11,000 Est. \$1,500/1,800



- 701 ★ **90c Carmine & Black, #122** **\$2,000**
O.g., fine, 2001 PSE cert. Scott \$12,000 .. Est. \$2,000/2,400



- 702 (★) **90c Carmine & Black, #122** **\$900**
Unused, fresh, sound, fine or better, 2013 PSE cert. Scott \$4,000 Est. \$1,000/1,200

Lot Description Start Bid Lot Description Start Bid



- 703 (★) **90c Carmine & Black, #122** **\$800**
"Regummed over small repair", fresh, fine to very fine appearance, 1999 PF cert. Scott \$4,000 Est. \$800/1,000
- 704 ○ **90c Carmine & Black, #122** **\$350**
Used, small thin at bottom, fresh, fine appearing. Scott \$1,800 Est. \$350/400
- 705 ○ **90c Carmine & Black, #122** **\$350**
Light cancel, "slightly clipped perfs along right", fine for this, 2001 APS cert. Scott \$1,800 Est. \$350/400



- 712 ○ **15c Brown & Blue, Type III, #129** **\$200**
Used, light registry cancel, fine to very fine, 2016 PSAG cert. Scott \$1,250 1981 issued Est. \$300/400
- 713 (★) **30c Ultramarine & Carmine, #131** **\$150**
Unused, nice stamp, small thin spots, otherwise very fine, 1991 PF cert. Scott \$1,100 1535 issued Est. \$200/300

1870-71 National Bank Note With Grill



- 706 ○ **90c Carmine & Black, #122** **\$300**
Used, reperfed at right, fine appearing. Scott \$1,800 Est. \$350/400
- 707 ○ **90c Carmine & Black, #122** **\$250**
Used, short perf at left, usual centering, v.g.-fine. Scott \$1,800 Est. \$350/400
- 708 ○ **90c Carmine & Black, #122** **\$250**
Black grid cancel, centered right, 2 tiny corner creases, fine for this. Scott \$1,800 Est. \$300/400



- 714 P **3c, Grilled, Imperf Proof on Stamp Paper, Horizontal Pair, #136P5** **\$300**
Full o.g., excellent margins all round, strong grill, very fine, 2011 PF cert. Scott \$1,200 Est. \$400/500



- 715 ★ **7c Vermilion, H. Grill, #138** **\$1,300**
O.g., fresh, fine, 1992, 2000 PF certs. Scott \$4,250 Est. \$1,300/1,500

1875 Re-issue of the 1869 Pictorial Issue



- 709 ★ **6c Blue, #126** **\$350**
O.g. (h.r.), just fine, 1974 PF cert. Scott \$1,750 Est. \$350/400
- 710 ○ **6c Blue, #126** **\$300**
Used, scarce as such with cert stating "registry cancel and short perf at lower right corner and light crease at upper right", 2016 PSAG cert. Scott \$3,250 2226 issued Est. \$450/500
- 711 (★) **12c Green, #128** **\$200**
Unused, nice color, P.F. (1989) cert., fine to very fine, 2016 PSAG cert. Scott \$1,025 1584 issued Est. \$350/400



- 716 ★ **7c Vermilion, H. Grill, #138** **\$500**
Large part o.g. (h.r.), "natural paper inclusion", fine, 1993 PF cert. Scott \$4,250 Est. \$500/600
- 717 (★) **10c Brown, H. Grill, #139** **\$450**
Unused, "small tear at top", well centered, attractive very fine appearance, 1988 PF cert. Scott \$2,550 Est. \$450/500

Lot Description Start Bid Lot Description Start Bid



- 718 (★) **15c Orange, H. Grill, #141** **\$700**
Unused, fresh, fine, 2004 PF cert. Scott \$2,500 .. Est. \$700/900
- 719 ○ **15c Orange, H. Grill, #141** **\$150**
Used, fine, 2016 PSAG cert. Scott \$1,500 Est. \$200/250

- 725 ★ **15c Bright Orange, #152** **\$350**
"Small part o.g.", sharp color, fine or better, 2009 PSE cert. Scott \$3,500 Est. \$400/500



- 720 ★ **90c Carmine, H. Grill, #144** **\$4,000**
O.g., centered bottom right, fine, scarce with gum, 1999 PF cert. Scott \$25,000 Est. \$4,000/4,500



- 726 ★ **24c Purple, #153** **\$800**
Full o.g., excellent color for this, fine and attractive, 1990 PF cert. Scott \$1,800 Est. \$800/1,000

- 727 ★ **24c Purple, #153** **\$350**
"Part o.g.", sound, fine to very fine, 2000 PF cert. Scott \$1,800 Est. \$500/600

- 728 ★ **24c Purple, #153** **\$250**
Dist. "part o.g.....slightly toned", fine, 2016 PF cert. Scott \$1,800 Est. \$350/400



- 721 ○ **90c Carmine, H. Grill, #144** **\$250**
Used with "light bend lower left", otherwise fine to very fine, 2016 PSAG cert. Scott \$2,500 Est. \$350/400



1870-71 National Bank Note Without Grill

- 722 P **Set Complete, Plate Proofs on India, #145P3-155P3** **\$120**
All with nice margins all round, 7¢ tiny thin, overall very fine. Scott \$311 Est. \$150/180

- 729 ★ **30c Black, #154** **\$1,800**
Full o.g., fine and attractive, 2002 PF cert. Scott \$7,500 Est. \$2,000/2,500



- 723 ★ **7c Vermilion, #149** **\$170**
"Dist. o.g.", excellent color, fine, 1998 PF cert. Scott \$1,000 Est. \$200/250

- 730 ★ **90c Carmine, #155** **\$2,300**
O.g., small h.r., probable grade 75, choice very fine, 1989 PF cert. Scott \$5,000 Est. \$2,500/3,000

- 724 (★) **10c Brown, #150** **\$150**
Unused, fine, 2009 APS cert. Scott \$850 Est. \$200/250

Lot Description Start Bid Lot Description Start Bid



731 ★ **90c Carmine, #155** **\$600**
 "Disturbed o.g.", sound, fine, 1995 APS cert. Scott \$5,000
 Est. \$700/900



737 P **Set of 4, Plate Proofs on Card, #183P4-193P4** **\$350**
 Excellent margins all round, 2¢ with "Lee" handstamp on reverse, a very fine set. Scott \$850 Est. \$450/500



732 P **1873, 1c-90c Continental Issue Set, Plate Proofs on Card, #156P4-166P4** **\$500**
 Excellent margins all round, a very fine set. Scott \$1,220
 Est. \$600/700



738 ★★ **5c Blue, #185** **\$900**
 N.h., fresh, immaculate and very fine, 1992, 2004 PF certs. Scott \$1,500 Est. \$900/1,100

733 ★ **1873, 10c Brown, #161** **\$140**
 L.h., very fresh, fine overall, photocopy of 1983 PF cert. for block. Scott \$900 Est. \$200/250

734 ★ **1873, 12c Blackish Violet, #162** **\$400**
 O.g. (h.r.), very fresh, fine. Scott \$2,400 Est. \$400/500



739 ★ **10c Brown, With Secret Mark, #188** **\$300**
 O.g., "small thin", fine appearing, 2001 PSE cert. Scott \$1,800 Est. \$300/350

740 ★ **30c Full Black, #190** **\$200**
 L.h., bend and lightly toned gum, clean cert., fine, 1988 PF cert. Scott \$900 Est. \$200/250



735 ★ **1873, 30c Gray Black, #165** **\$1,100**
 O.g., fine, 2003 PF cert. Scott \$4,000 Est. \$1,100/1,300

1879 American Bank Note Issue



741 ★ **90c Carmine, #191** **\$300**
 O.g. (h.r.), nice color, fine to very fine, 2016 PSE cert. Scott \$2,000 Est. \$400/500



736 ☒ **1c on 1877 Cover, #182** **\$200**
 Fine to very fine pair tied on 3¢ entire by "New York Mar 3" duplex to Bucharest, Roumania, 877 receiver on reverse, manuscript "Per Str. Neckar via Bremen, very fine, one of the rarest original U.P.U. members with only 4-5 Banknote era franking recorded Est. \$300/400

742 P **1881-82, 1883 ABN Sets, Plate Proofs on Card, #205P4-209P4, 210P4-211P4** **\$200**
 Missing only rare #212P4, excellent margins all round, very fine. Scott \$485 Est. \$250/300

Lot Description Start Bid Lot Description Start Bid



743 ★★ **1882, 6c Deep Brown Red, Re-Engraved, #208a** \$450
N.h., sharp color, fine, 2003 PSE cert. for block. Scott \$1,600 Est. \$450/550



744 P **1887, 1c to 90c Set, Plate Proof on Card, #212P4-229P4** \$250
Complete, incl. 2c deep shade, nice margins all round. Scott \$985 Est. \$350/450



745 ★★ **1888, 30c Orange Brown, #217** \$200
N.h., tiny inclusion at top, excellent color, fine to very fine. Scott \$900 Est. \$240/280

746 ★ **1888, 30c Orange Brown, #217** \$90
Full o.g., fine to very fine, 2006 PSE cert. Scott \$250 Est. \$100/120

747 ☒ **1888, 30c on State Dept. Cover, #217** Web \$200
Fine, tied with additional 10c Bank Note by Washington DC JAN 22 1889 to oversized cover to Belgium, seal on reverse, slightly dirty, otherwise fine. Scott \$1,400+ Est. \$300/400

1890-93 American Bank Note Issue

748 P **Set Complete, Plate Proofs on Card, #219P4-229P4** Web \$500
Also incl. #219DP5 pair, 226P5 margin single, Special Delivery E1P4-3P4, excellent margins all round, very fine to extremely fine. Scott \$1,155 Est. \$600/700

749 ★○ **Set Complete, #219-229** Web \$280
Mint and used selection on small pages to 90c mint, etc., used incl. unusual cancels incl. 5c with Shanghai cds, mint copies mostly picked for centering, with #220a, fine to very fine overall Est. \$400/600



750 E **2c A.B.N.C. Washington Essay, in Dark Brown, #220-E8b** \$180
53mm by 62mm, small hole at bottom and hinge marks, overall very fine. Brazer #115aE-Fd. Scott \$700 Est. \$250/300

751 ☒ **2c on Cover to Connecticut, #220** Web \$100
Advertising from John H Ihorn with Feb 3 1891 Harrisonville Il. cancel who was also P.M., some toning, generally fine to very fine, *Ex Sam Paige auction December 1957* Est. \$150/200

752 P **2c Specialized Study, #220-221** Web \$250
On 5 homemade exhibit pages, mostly gummed proofs incl. #219DP5 pair and block of 4, 220P5 pair, 2 blocks of 4 with shades, also numerous shades on gummed paper, used copies incl. the various "cap" flaws, overall very fine, *see cover lot 1546* Est. \$350/450



753 ★★ **5c Chocolate, #223** \$150
N.h., very fine, 1997, 2005 PF certs. Scott \$200 Est. \$150/180



754 P☐ **5c, Imperf Proof on Stamp Paper, Block of 4, #223P5** \$350
Used, clear to large margins all round, "small thin spots at top...tiny surface scrapes", fine overall, 1987 PF cert., *extremely rare* Est. \$500/750

Lot Description Start Bid Lot Description Start Bid

755 P **6¢, Trial Color Plate Proofs on Wove, #224TC** *Web* \$400

O.g. blocks with bottom pairs n.h., 3 blocks of four and four pairs, colors incl. yellow, olive green, slate green, red orange, violet black, brown olive and orange red, all have large margins, few faults, all appear Very Fine, nearly very fine, *Ex Finkelberg*. Scott \$2,400+ Est. \$600/800



761 ★★ **90¢ Orange, #229** \$200
N.h., rich color, fine to very fine. Scott \$1,450 Est. \$300/350

762 ★ **90¢ Orange, #229** \$100
O.g., very fine, 1996 PF cert. Scott \$475 Est. \$150/200

1893 Columbian Issue

756 ★★ **8¢ Lilac, #225** \$80
N.h., marginal copy (selvage detached), very nice centering and a large copy, very fine to extremely fine. Scott \$150 Est. \$100/130

757 ★★ **10¢ Green, #226** \$200
N.h., fresh, fine to very fine, 1998 PF cert. Scott \$525 Est. \$200/250



763 ★★★□ **3¢, Block of 15, #232** *Web* \$400
N.h., top #75, major perf separations affecting plate block, one stamp damaged (not counted) at lower left not affecting pl. block, still a scarce multiple, nice centering, fine to very fine. Scott \$2,760+ Est. \$450/550

764 ★□ **3¢-6¢ Mint Accumulation, Block of 4, #232-235** *Web* \$500
N.h., consists of #232 (19), 233 (block of 10), 234 (block of 10), 235 (8), couple with minor faults, just fine centering overall, excellent colors, Just Fine. Scott \$6,475+ Est. \$650/850

765 ★★□ **6¢, Block of 4, #235** *Web* \$150
N.h., couple of unpunched perfs, well centered, overall very fine. Scott \$640+ Est. \$200/250

766 ★★□ **8¢, Block of 4, #236** *Web* \$130
N.h., small spot upper right copy, well centered, fine to very fine. Scott \$640+ Est. \$180/220

758 P **15¢, Imperf Proof on Stamp Paper, Pair, #227P5** \$200
L.h., nice margins all round, immaculate and very fine. Scott \$625 Est. \$300/350

767 ★□ **10¢, Block of 4, #237** *Web* \$100
N.h. (2), l.h. (2), fine to very fine. Scott \$770 .. Est. \$120/140

759 ★ **15¢ Indigo, #227** \$100
O.g., well centered large copy, very fine to extremely fine, 1988 PF cert. Scott \$200 Est. \$140/180



768 ★★ **30¢ Orange Brown, #239** \$300
N.h., excellent color, immaculate and very fine. Scott \$725 Est. \$300/350



760 ★★□ **15¢, Bottom Block of 10, #227** \$400
N.h., with pl. #22, se. at left, slight gum dist., centered right, just fine. Scott \$6,000+ Est. \$600/800

769 ★★ **30¢ Orange Brown, #239** \$280
N.h., missed perf, excellent color, fine to very fine, 2001 PSE cert. Scott \$725 Est. \$280/300

Lot Description Start Bid Lot Description Start Bid



770 ★★ **30¢ Orange Brown, #239** **\$150**
 N.h., "gum bend", well centered, very fine. Scott \$725
 Est. \$200/250



776 ★ **\$1 Salmon, #241** **\$300**
 L.h., fresh, fine to very fine. Scott \$1,100 Est. \$350/400



777 ★ **\$1 Salmon, #241** **\$300**
 "Disturbed o.g.", "two thin spots", fine to very fine appearing, 2001 PSE cert. Scott \$1,100 Est. \$300/350



771 ★★★□ **30¢, Block of 4, #239** **\$200**
 N.h. (left pair), l.h. (right pair), fresh, fine. Scott \$1,930
 Est. \$300/350



778 ★ **\$1 Salmon, #241** **\$300**
 Very l.h., fresh, fine or better. Scott \$1,100 Est. \$300/400



779 (★) **\$1 Salmon, #241** **\$150**
 Unused, very fine. Scott \$550 Est. \$200/250



772 ★ **50¢ Slate Blue, #240** **\$100**
 O.g. (h.r.), grade 80 very fine, 2016 PSE cert. Scott \$500
 Est. \$150/200



773 ★ **50¢ Slate Blue, #240** **\$100**
 L.h., fine to very fine. Scott \$500 Est. \$130/160



780 (★) **\$1 Salmon, #241** **\$150**
 Unused, couple of gum glaze spots, missed perf, fine. Scott \$550 Est. \$200/250



781 (★) **\$1 Salmon, #241** **\$150**
 Unused, very fresh, very fine. Scott \$550 Est. \$200/250



774 ★ **\$1 Salmon, #241** **\$300**
 O.g., fresh, fine to very fine, 2016 PSE cert. Scott \$1,100
 Est. \$400/450



775 ★ **\$1 Salmon, #241** **\$300**
 L.h., fresh, fine to very fine. Scott \$1,100 Est. \$350/400



782 ★★★□ **\$1 Salmon, Block of 4, #241** **\$1,000**
 N.h. (3), top right o.g., bottom copies with "light horizontal crease" (severe in our opinion), fresh, otherwise fine, 2016 PSE cert. Scott \$12,350 Est. \$1,500/2,000

Lot Description Start Bid Lot Description Start Bid



783 ○ **\$1 Salmon, #241** **\$120**
Used, violet hs. on reverse, fine. Scott \$600 Est. \$140/160

784 (★) **\$1, \$2, #241-242** *Web* **\$100**
Unused, both with filled thins, fresh, nice centering, fine to very fine appearing. Scott \$1,100 Est. \$150/200

785 ★ **\$2 Brown Red, #242** **\$700**
L.h., fresh, well centered, very fine, 2002 PSE cert. Scott \$1,150 Est. \$700/800

786 (★) **\$2 Brown Red, #242** *Web* **\$80**
"Regummed and reperforated at left", generally fine, 2016 PSE cert. Scott \$550 Est. \$100/130



787 ○ **\$2 Brown Red, #242** **\$200**
Used, fine to very fine. Scott \$575 Est. \$200/240

788 ○ **\$2 Brown Red, #242** **\$100**
Used, fine to very fine, 1983 PF cert. Scott \$575 . Est. \$140/180



789 ★ **\$3 Yellow Green, #243** **\$1,000**
N.h., "scuff at lower left", excellent color, well centered, handsome very fine appearance. Scott \$4,750 Est. \$1,000/1,200



790 (★) **\$3 Yellow Green, #243** **\$250**
Unused, sound, almost very fine. Scott \$750 .. Est. \$350/450

791 (★) **\$3 Yellow Green, #243** **\$150**
Unused, fine, 2016 PSE cert. Scott \$750 Est. \$250/300



792 (★) **\$3 Yellow Green, #243** **\$150**
Unused, "tiny hinge thin", otherwise very fine, 2016 PSE cert. Scott \$750 Est. \$250/300

793 (★) **\$3 Yellow Green, #243** **\$150**
Unused, well centered, added corner perf, fine. Scott \$750 Est. \$200/250



794 ○ **\$3 Yellow Green, #243** **\$250**
Corner violet reg. cancel, fresh, fine. Scott \$800 Est. \$250/300



795 ○ **\$3 Yellow Green, #243** **\$250**
Used, fresh, small thin, well centered, lovely very fine appearance. Scott \$800 Est. \$250/300

796 ○ **\$3 Yellow Green, #243** **\$250**
Double oval registry cancel, "diagonal wrinkle at top", fine to very fine overall. Scott \$800 Est. \$250/300



797 ★ **\$4 Rose Carmine, #244** **\$600**
O.g. (h.r.), well centered, excellent color, lovely very fine appearance. Scott \$2,000 Est. \$800/1,000

798 (★) **\$4 Crimson Lake, #244** **\$500**
Unused, nicely centered, excellent color, very fine. Scott \$1,000 Est. \$500/600

Lot Description Start Bid Lot Description Start Bid



799 ★ **\$4 Rose Carmine, #244** **\$500**
 O.g., short perf upper right, fine and attractive. Scott \$2,000
 Est. \$500/600



806 ★ **\$5 Black, #245** **\$1,700**
 Full o.g., very nice centering, large copy, sharp impression,
 choice very fine. Scott \$2,400 Est. \$1,700/1,900



800 ★ **\$4 Crimson Lake, #244** **\$300**
 O.g., fine, 2016 PSE cert. Scott \$2,000 Est. \$500/600



807 (★) **\$5 Black, #245** **\$300**
 Unused, nicely centered, overall very fine, 1996 PF cert.
 Scott \$1,200 Est. \$450/550

801 (★) **\$4 Crimson Lake, #244** **\$200**
 Unused, nice color, Grade 80 very fine, 2016 PSAG cert.
 Scott \$1,000 Est. \$300/350

808 (★) **\$5 Black, #245** **\$300**
 Unused, small inclusion on reverse, fresh, fine or better.
 Scott \$1,200 Est. \$400/500



802 (★) **\$4 Crimson Lake, #244** **\$200**
 Unused, nice color, fine to very fine, 2016 PSE cert. Scott
 \$1,000 Est. \$300/350



809 ★ **\$5 Black, #245** **\$250**
 O.g., "two tiny thin spots", otherwise fine, 2016 PSE cert.
 Scott \$2,400 Est. \$350/400

803 (★) **\$4 Rose Carmine, #244a** **\$200**
 "Regummed over repairs at the bottom right", otherwise
 fine, 2016 PSE cert. Scott \$1,000 Est. \$300/400

810 (★) **\$5 Black, #245** **\$200**
 Unused, "pinhole at top right corner", otherwise fine to very
 fine, 2016 PSE cert. Scott \$1,200 Est. \$250/300



804 ○ **\$4 Rose Carmine, #244a** **\$400**
 Attractive cds, large copy, very fine to extremely fine. Scott
 \$1,050 Est. \$500/600



811 ○ **\$5 Black, #245** **\$400**
 Target cancel, nicely centered, choice very fine. Scott \$1,200
 Est. \$500/600

805 ○ **\$4 Crimson Lake, #244** **\$100**
 Used, small tear repair at top, fine to very fine appearance.
 Scott \$1,050 Est. \$150/200

Lot Description Start Bid Lot Description Start Bid



- 812 ○ **\$5 Black, #245** **\$260**
Reg. cancel, shallow thin at top, light diagonal corner crease, fine to very fine appearing. Scott \$1,200 Est. \$300/400
- 813 ○ **\$5 Black, #245** **\$250**
Heavy reg. cancel, rounded corners, fine. Scott \$1,200 Est. \$300/400



- 818 ★ **6c Dull Brown, #256** **\$110**
O.g., "apparent centering grade 98...small gum crease at bottom", Grade 90, very fine to extremely fine. Scott Stamp Values \$260 Est. \$150/200
- 819 ★★ **50c Orange, #260** **\$200**
N.h., fresh, fine or better, 1987, 2001 PF certs. Scott \$1,500 Est. \$300/400
- 820 ★ **50c Orange, #260** **\$180**
L.h., centered, very fine. Scott \$500 Est. \$200/250

1894 Bureau Issue



- 814 ★ **1c to 50c, #246-260** **\$450**
L.h. to sweated o.g., fine to very fine. Scott \$2,585 Est. \$600/800



- 821 ★ **50c Orange, #260** **\$100**
O.g., gum bends and wrinkles, centered, very fine. Scott \$500 Est. \$130/160



- 815 ★★ **1c Ultramarine, #246** **\$700**
N.h., jumbo copy, Grade 95J extremely fine to superb, 2010 PSE cert. Scott Stamp Values \$850, *census 7 with higher grade* Est. \$700/800

- 822 ★ **\$1 Black, Type I, #261** **\$300**
L.h., nicely centered, very fine. Scott \$1,000 .. Est. \$400/500



- 823 ★ **\$1 Black, Type II, #261A** **\$325**
Large part o.g. (h.r.), fresh, mostly fine. Scott \$2,100 Est. \$400/500



- 824 ★ **\$1 Black, Type II, #261A** **\$100**
O.g., disturbed gum, otherwise very fine. Scott \$2,100 Est. \$150/200

- 816 ★★ **2c Carmine Lake, Type I, #249** **\$500**
N.h., pl. # copy, one perf hole disc not cleared, jumbo copy, extremely fine, 2012 PSE cert. Scott \$450+ .. Est. \$600/800



- 817 ★★ **2c Carmine, Type III, #252** **\$110**
N.h., imprint single, one missed perf, nicely centered, choice very fine, 2002 PF cert. Scott \$375+ Est. \$150/200

- 825 ★ **\$2 Bright Blue, #262** **\$500**
Lightly dist. o.g., fine. Scott \$2,750 Est. \$600/800

Lot Description Start Bid Lot Description Start Bid



- 826 ○ **\$2 Bright Blue, #262** **\$200**
Grid cancel, fine to very fine. Scott \$1,250 Est. \$250/300
- 827 ○ **\$2 Bright Blue, #262** **\$100**
Used, perfs touch at left, sound, v.g.-fine. Scott \$1,250
..... Est. \$150/200



- 828 ★ **\$5 Dark Green, #263** **\$500**
O.g., "natural gum crease at bottom and very tiny corner crease at lower left", just fine, 2015 Weiss cert. Scott \$4,500
..... Est. \$500/600
- 829 ○ **\$5 Dark Green, #263** **\$500**
Used, "thin and minor facial rub", very well centered, lovely very fine appearance, 2005 PF cert. Scott \$2,750
..... Est. \$500/600
- 830 ○ **\$5 Dark Green, #263** **\$450**
Used, centered, fine to very fine. Scott \$2,750 Est. \$600/800

1895 Watermarked Issue



- 831 ○ **6c Dull Brown, Watermarked USIR, #271a** **\$1,000**
Used, "small faults", copy of 2003 PSE cert. for pair. Scott \$8,500 Est. \$1,000/1,200



- 832 ○ **8c Violet Brown, Watermarked USIR, #272a** **\$450**
Used, well centered, very fine, 2002 PF cert. Scott \$950
..... Est. \$450/550



- 833 ○ **8c Violet Brown, Watermarked USIR, #272a** **\$150**
Used, "pulled perforation at top left and a small tear at left center", otherwise very fine, 2001 PF cert. Scott \$950
..... Est. \$200/300
- 834 ★★ **10c Dark Green, #273** **\$280**
N.h., large copy, very fine to extremely fine. Scott \$280
..... Est. \$300/350
- 835 ★★ **\$1 Black, Type I, #276** **\$400**
N.h., rich color, fine to very fine. Scott \$1,800 Est. \$400/500



- 836 ★ **\$2 Bright Blue, #277** **\$300**
L.h., nicely centered, fresh, very fine stamp, 2011 PSAG cert. Scott \$900 Est. \$300/350
- 837 ★ **\$5 Dark Green, #278** **\$600**
Full o.g., fresh, almost very fine, 1980, 2004 PSE certs. Scott \$2,000 Est. \$800/1,000
- 838 ★ **\$5 Dark Green, #278** **\$400**
Full o.g. (small h.r.), excellent color, fine and attractive. Scott \$2,000 Est. \$450/550



- 839 B★★ **1898, 2c Red, Type IV, Booklet Pane of 6, #279Bj** **\$200**
N.h., very fine. Scott \$1,000 Est. \$300/400

Lot Description Start Bid Lot Description Start Bid

840 ★★□ **1898, 4c Rose Brown, Plate Block of 6, #280** *Web* **\$110**
 N.h., bottom #1100, vert. perfs touch, fresh, v.g.-fine. Scott \$1,175 Est. \$150/200



1898 Trans-Mississippi Issue

841 ★★★□ **4c, Block of 4, #287** *Web* **\$150**
 Top pair h.r., bottom n.h., light line impression left pair, deep color, centered, overall very fine. Scott \$820+ .. Est. \$200/250



842 ★★ **5c Dull Blue, #288** **\$80**
 N.h., very fresh, very fine, 1997 PF cert. Scott \$275 Est. \$100/130

843 ★★□ **5c, Block of 4, #288** *Web* **\$120**
 N.h., sharp color, fine, 2016 PSE cert. Scott \$1,100 Est. \$180/220

844 ★□ **5c, Block of 4, #288** *Web* **\$80**
 Slightly glazed o.g., fine to very fine. Scott \$425 Est. \$120/150



845 ★★□ **8c, Block of 4, #289** **\$200**
 N.h., usual centering, excellent color, fine, 2016 PSE cert. Scott \$1,700 Est. \$300/350



846 ★★★□ **10c, Block of 4, #290** **\$240**
 Top pair o.g. (h.r.), bottom n.h., fresh, fine to very fine. Scott \$1,150+ Est. \$300/350

847 ★★□ **10c, Block of 4, #290** **\$200**
 N.h., usual centering, excellent color, fine, 2016 PSE cert. Scott \$1,700 Est. \$250/300



848 ★□ **10c, Plate Block of 6, #290** **\$750**
 Slightly disturbed o.g., large bottom #620. Scott \$3,500 Est. \$750/900



849 ★ **50c Sage Green, #291** **\$200**
 L.h., very fine, 1990 PF cert. Scott \$600 Est. \$200/250



850 ★ **50c Sage Green, #291** **\$150**
 O.g., fresh, fine to very fine, photocopy of 1987 PF cert. Scott \$600 Est. \$150/200

851 ★ **50c Sage Green, #291** **\$120**
 O.g. (h.r.), fresh, fine, 2012 Weiss cert. Scott \$600 Est. \$120/150

Lot Description Start Bid Lot Description Start Bid



852 ★ **50c Sage Green, #291** \$120
L.h., "light horiz. crease at top", fresh, fine, 1987 Weiss cert. Scott \$600 Est. \$120/150

853 ★ **50c Sage Green, #291** \$100
O.g., "small thin spot", decent centering, very fine appearance, 1982 PF cert. Scott \$600 Est. \$120/150



854 ★★ **\$1 Black, #292** \$900
N.h., top pl. # 606, fine to very fine, 2001 PSE cert. for pair. Scott \$3,500+ Est. \$1,000/1,200



855 ★ **\$1 Black, #292** \$600
L.h., fresh, fine, 1991 PF cert. Scott \$1,400 ... Est. \$600/800

856 ★ **\$1 Black, #292** \$450
Dist. o.g. Scott \$1,400 Est. \$450/550



857 ★ **\$1 Black, #292** \$350
Slightly dist. o.g., reperfed at right, fine, signed on reverse. Scott \$1,400 Est. \$350/400

858 ★ **\$1 Black, #292** \$280
Part o.g., se. at right, decent centering, fine to very fine. Scott \$1,400 Est. \$350/450



859 ★ **\$1 Black, #292** \$200
O.g. (h.r.), "four tiny thins", fresh color, otherwise very fine, 2016 PSE cert. Scott \$1,400 Est. \$300/400

860 ★ **\$1 Black, #292** \$150
O.g. (h.r.), "tiny hinge thins", otherwise fine, 2016 PSE cert. Scott \$1,400 Est. \$250/300



861 (★) **\$1 Black, #292** \$150
Regummed, small thin, otherwise fine to very fine. Scott \$800 Est. \$250/300

862 (★) **\$1 Black, #292** \$150
Unused, "tiny thin spot at top right", fine to very fine appearance, 2016 PSE cert. Scott \$800 Est. \$200/250



863 ○ **\$1 Black, #292** \$300
Lightly canc'd., nicely centered, Grade 80 very fine, 2016 PSE cert. Scott \$725 Est. \$400/500

864 ○ **\$1 Black, #292** \$170
Reg. cancel, tiny scuff above "G" of "Postage", fine appearing. Scott \$725 Est. \$200/250



865 ○ **\$1 Black, #292** \$150
Duplex cancel, "reperfed at right", fine, 2015 PSAG cert. Scott \$725 Est. \$170/200

866 ○ **\$1 Black, #292** \$140
Used, wrinkle, fine to very fine. Scott \$725 Est. \$200/250

Lot Description Start Bid Lot Description Start Bid



- 867 ○ **\$1 Black, #292** **\$100**
Used, reperfed at left, diagonal crease upper right, fine appearing. Scott \$725 Est. \$140/180
- 868 ○ **\$1 Black, #292** **\$100**
Used, vert. crease, fresh, fine appearing. Scott \$725 Est. \$140/180
- 869 ○ **\$1 Black, #292** *Web* **\$80**
"Genuine used, with a removed cancel and faulty", otherwise fine to very fine, 2016 PSE cert. Scott \$725 Est. \$130/160



- 870 ★ **\$2 Orange Brown, #293** **\$650**
O.g., excellent color, fine to very fine, 1987 PF cert. Scott \$1,900 Est. \$700/800



- 871 ★ **\$2 Orange Brown, #293** **\$350**
O.g. (large h.r.), nicely centered, overall very fine, 2016 PSE cert. Scott \$1,900 Est. \$400/500



- 872 ★ **\$2 Orange Brown, #293** **\$250**
O.g., "tiny hinge thins", otherwise fine, 2016 PSE cert. Scott \$1,900 Est. \$350/400
- 873 ★ **\$2 Orange Brown, #293** **\$200**
O.g., "reperforated at left", otherwise fine, 2016 PSE cert. Scott \$1,900 Est. \$300/350

1901 Pan-American Issue



- 874 ★★□ **Set Complete, Blocks of 4, #294-299** **\$400**
1¢, 4¢ n.h., 2¢, 5¢ slightly dist. gum, 8¢ 3 n.h., 11h., 10¢ h.r., otherwise fine to very fine. Scott \$2,452 Est. \$500/600

- 875 ★○ **Set Complete, Vignette Shifts, #294-299** *Web* **\$400**
21 copies mint or used and block of 1¢ mint, incl. 2¢ "fast and slow train", couple very dramatic, fine overall . Est. \$500/700



- 876 ★ **2¢ "High & Fast Train", #295** **\$180**
O.g., "vertical light crease", scarce combo, 2013 PSE cert. Est. \$200/250



- 877 S **4¢, Center Inverted, Overprinted "Specimen", #296aS** **\$700**
Unused, "regummed, with tear at right and "SPECIMEN" overprint removed", handsome very fine appearance, 2016 PSE cert. Scott \$11,500 Est. \$1,000/1,500



- 878 ★□ **10¢, Plate Block of 6, #299** **\$700**
O.g., bottom pl. #1151, fine to very fine. Scott \$6,750 Est. \$1,000/1,200

Lot Description Start Bid Lot Description Start Bid



879 ★★□ **10c, Block of 6, #299** \$600
 N.h., bottom partial imprint, well centered, very fine. Scott \$1,800+ Est. \$600/800

1902-1908 Presidential Issue



880 B★ **1c, Booklet Pane of 6, #300b** \$140
 Very l.h., couple perf issues at right side rejoined, nice margins all round, fresh and fine. Scott \$600 .. Est. \$200/250



881 ★★ **\$1 Black, #311** \$600
 N.h., light gum toning not mentioned, fine to very fine, 1989 PF cert. Scott \$1,900 Est. \$600/750



882 ★★ **\$2 Dark Blue, #312** \$900
 N.h., "Minor perf tip toning at top", nice centering, fine to very fine, 2005 PSE cert. Scott \$2,550 Est. \$1,000/1,200



883 ★ **\$5 Dark Green, #313** \$650
 "Sweated" o.g., fresh, fine, 1998 APS cert. Scott \$2,100 Est. \$650/750

884 ★ **\$5 Dark Green, #313** \$450
 O.g., light gum crease, very well centered jumbo copy, probable grade 95+ if sound, extremely fine to superb appearance. Scott \$2,100 Est. \$600/800

885 ★ **\$5 Dark Green, #313** \$230
 O.g., reperfed at right, rich color. Scott \$2,100 Est. \$300/400

1906-08 Imperforate Issue



886 ★★ **5c Blue, Imperf, #315** \$300
 N.h., marginal copy (missing gum in selvage only), extremely fine, 1995 PSE cert. Scott \$600+ .. Est. \$350/450



887 ★★ **5c Blue, Imperf, Marginal Pair, #315** \$700
 N.h., very fine or better. Scott \$1,300+ Est. \$700/800



888 ★★ **5c Blue, Imperf, Pair, #315** \$600
 N.h., nice margins all round, very fine. Scott \$1,300 Est. \$600/800

889 ★★ **5c Blue, Imperf, Pair, #315** \$600
 N.h., nice margins all round, very fine. Scott \$1,300 Est. \$600/800

Lot Description Start Bid Lot Description Start Bid



890 ★ **5c Blue, Imperf, Pair, #315** \$425
L.h., nice margins all round, very fine. Scott \$675
..... Est. \$450/550



891 ★★ **5c Blue, Imperf, Pair, #315** \$350
N.h., four large margins, very fine. Scott \$1,300
..... Est. \$500/600



892 ○ **5c Blue, Imperf, Pair, #315** \$4,000
Wavy-line machine cancel, excellent margins all round, deep rich color, extremely fine to superb and rare, *Ex Hillmer, Grace*, 1987 PF cert. Scott \$11,500, *According to Johl*, only 29 sheets of 400 of the 5c imperforate were issued. Most were sent to Indianapolis and the majority was used by manufacturers of private coils. Some unused were no doubt kept by collectors, 825 copies were distributed to members of the Detroit Philatelic Society. It is possible that most of the used copies originate from this supply, extremely rare in used condition Est. \$5,000/6,000



893 ★ **1908, 1c, Experimental Coil, Perf 12 Vertical, #318** \$1,800
Full gum (h.r.), fine and scarce, 1975, 1999 PF certs. Scott \$4,250 Est. \$2,000/2,500

894 B★★ **1903, 2c Carmine, Type I, Booklet Pane of 6, #319g** Web \$100
N.h., with pl. #3810, fine. Scott \$500 Est. \$130/160



895 B★ **1903, 2c Carmine, Type II, Booklet Pane of 6, #319Fh** \$200
L.h., very well centered, very fine to extremely fine. Scott \$900 Est. \$300/400

896 ★★□ **1904, 2c Louisiana Purchase, Plate Block of 4, #324** Web \$100
N.h., large top #2159, fine to very fine. Scott \$325
..... Est. \$120/150



897 ★★□ **1904, 3c Louisiana Purchase, Plate Block of 4, #325** \$250
N.h., large top #2104, diagonal wrinkle at bottom, translucent spot, excellent centering, sharp color, extremely fine appearance. Scott \$1,050 Est. \$300/400

898 ★□ **1907, 1c Jamestown, Plate Block of 6, #328** Web \$80
O.g., small top pl.# 3543, very fine. Scott \$550
..... Est. \$120/130

899 ★★□ **1907, 2c Jamestown, Plate Block of 6, #329** Web \$200
N.h., top #3671, fresh, fine to very fine. Scott \$900
..... Est. \$250/300

Lot Description Start Bid Lot Description Start Bid



900 ★★□ **1908, 3c, Plate Block of 6, #333** \$100
 N.h., small bottom pl# 5127, very fine. Scott \$650
 Est. \$150/200

901 ★★□ **1909, 15c, Plate Block of 6, #340** *Web* \$100
 N.h., wide side pl# 4949, fine. Scott \$1,175 ... Est. \$150/200



902 ★ **1909, 50c Violet, #341** \$100
 L.h., very fine, 2000 PF cert. Scott \$300 Est. \$100/120



903 ★★ **1908, 1c, Vertical Coil, Line Pair, #348** \$375
 N.h., Grade 85 very fine to extremely fine, 2014 PF cert.
 Scott Stamp Values \$750 Est. \$400/500



904 ★★ **1910, 4c, Vertical Coil, #350** \$325
 N.h., very well centered, very fine to extremely fine, 2002
 APS cert. Scott \$325 Est. \$325/375



905 ★★ **1909, 5c, Vertical Coil, #351** \$70
 N.h., fine. Scott \$325 Est. \$100/130



906 ★★ **1909, 5c, Vertical Coil, Line Pair, #351** \$550
 N.h., "with light natural vertical gum crease", outstanding
 centering, rich color, otherwise very fine, 2016 PF cert. Scott
 \$2,350 Est. \$800/1,000



907 ★ **1909, 4c, Horizontal Coil, Line Pair, #354** \$250
 O.g., "tiny corner crease top right", very well centered,
 attractive very fine appearance, 2001 PF cert. Scott \$1,400
 Est. \$350/450



908 ○ **1909, 5c, Horizontal Coil, Line Pair, #355** \$600
 O.g., lightly canceled, "slightly toned", top center perf not
 quite complete (not mentioned), well centered, fine and
 scarce, 1993 PF cert. Scott \$4,000 Est. \$600/800



909 ★★ **1909, 10c, Horizontal Coil, #356** \$2,300
 N.h., "tiny torn perf at lower right", centered, fine, 2003 PSE
 cert. Scott \$8,000 Est. \$2,500/3,000

Lot Description Start Bid Lot Description Start Bid

1909 Bluish Paper Issue



- 910 ★ **6c Red Orange, #362** \$600
L.h., fine to very fine, 1988 PF cert. for block. Scott \$1,250
..... Est. \$650/750
- 911 ★ **10c Yellow, #364** \$500
O.g., "with natural paper inclusion in the left lower margin",
otherwise fine to very fine. Scott \$1,600 Est. \$700/800
- 912 ★ **13c Blue Green, #365** \$600
O.g., "experimental gray paper variety with small thin and
natural paper inclusion", fine appearing and scarce, 2013
PSE cert. Scott \$2,600 Est. \$600/800



- 913 ★★ **15c Pale Ultramarine, #366** \$600
N.h., pl. # copy, centered right, fine for this, 2007 PSE cert.
Scott \$3,000+ Est. \$600/800



- 914 ★ **15c Pale Ultramarine, #366** \$500
"Partly dist. o.g. from hinge removal", fine to very fine, 2008
PF cert. Scott \$1,250 Est. \$500/600



- 915 ★ **15c Pale Ultramarine, #366** \$350
"Slightly dist. o.g., reperfed at top", fine overall, 2014 PSAG
cert. Scott \$1,250 Est. \$500/650
- 916 ★ **15c Pale Ultramarine, #366** \$200
"Disturbed o.g.", fine 2016 PSE cert. Scott \$1,250 . Est. \$300/400



- 917 ★★ **1909, 2c Lincoln Bluish Paper, #369** \$270
N.h., Grade 85 very fine to extremely fine, 2014 PSAG cert.
Scott Stamp Values \$550 Est. \$270/300



- 918 ★□ **1909, 2c, Plate Block of 6, #369** \$250
Left #4978, o.g., small light thin, lovely fine appearance.
Scott \$2,750 Est. \$300/400



- 919 ★□ **1909, 2c, Plate Block of 6, #369** \$200
L.h., small bottom pl# 4976, gum skip on bottom left stamp,
otherwise fine to very fine. Scott \$2,750 Est. \$300/400

- 920 ★★□ **1909, 2c Hudson-Fulton, Imperf Sheet of 50, #373** Web \$300
N.h., pl. #5390, pencil notation on top of sheet in margin,
otherwise very fine. Scott \$1,770 (as 2 plates, 24 pairs)
..... Est. \$400/500

- 921 ★★□ **1911, 6c, Plate Block of 6, #379** Web \$200
N.h., bottom #1928, imprint faint, excellent color, fine to
very fine. Scott \$700 Est. \$200/250

Lot Description Start Bid



922 ★ **1910, 2¢, Vertical Coil, Pair, #386** \$100
O.g., well centered, Grade 80 very fine, 2016 PSE cert. Scott \$300 Est. \$140/180

1910-11 Coil Issue



923 ★ **3¢, Horizontal, Line Pair, #394** \$200
L.h., fine to very fine, 1974, 2012 PF certs. Scott \$425 Est. \$200/240

924 ○ **3¢, Horizontal, Line Pair, #394** \$400
Used, fine to very fine overall, 2002 PF cert. Scott \$650 Est. \$450/500



925 ○ **3¢, Horizontal, Line Pair, #394** \$300
Used, well centered, very fine, 1995 PF cert. Scott \$650 Est. \$300/350

926 ○ **3¢, Horizontal, Line Pair, #394** \$280
Used, well centered, very fine, 2009 Weiss cert. Scott \$650 Est. \$300/350



927 ★★ **4¢, Horizontal, Line Pair, #395** \$500
N.h., nicely centered, very fine and attractive, 2011 PF cert. Scott \$1,100 Est. \$500/600

Lot Description Start Bid



928 ★ **4¢, Horizontal, Line Pair, #395** \$170
Very l.h., fine to very fine, 1988 PF cert. Scott \$475 Est. \$170/200

929 ★★ **5¢, Horizontal, Line Pair, #396** \$300
N.h., fine to very fine, 2008 PSE cert. Scott \$975 Est. \$300/350



930 ★★ **5¢, Horizontal, Line Pair, #396** \$250
N.h., fresh, fine to very fine centering, 2015 PF cert. Scott \$975 Est. \$270/300

931 ★ **5¢, Horizontal, Line Pair, #396** \$150
L.h., fine to very fine, 2012 PF cert. Scott \$425 Est. \$170/200



932 ★ **5¢, Horizontal, Line Pair, #396** \$100
O.g., fine to very fine. Scott \$425 Est. \$140/180

933 ★ **5¢, Horizontal, Line Pair, #396** \$100
L.h., fine to very fine. Scott \$425 Est. \$140/180



934 ○ **5¢, Horizontal, Line Pair, #396** \$300
Used, with additional portions of adhesives at left and right, centered, very fine, 1992 PF, 2013 PSAG certs. Scott \$825 Est. \$300/400

935 ○ **5¢, Horizontal, Line Pair, #396** \$300
Used, centered, very fine, 1995 PF cert. Scott \$825 Est. \$300/400

Lot Description Start Bid Lot Description Start Bid

1913-1915 Panama-Pacific Issue



936 ★★ **5c, Perf 12, #399** **\$150**
 N.h., Grade 90 an extremely fine gem, 2002 PSE cert. Scott Stamp Values \$325 Est. \$150/180

937 ★★□ **5c, Perf 12, Block of 4, #399** *Web* **\$150**
 N.h., very well centered, very fine. Scott \$640 Est. \$200/250



938 ★★□ **5c, Perf 12, Plate Block of 6, #399** **\$700**
 N.h., narrow top pl. #6134, rich color, very fine. Scott \$3,200 Est. \$900/1,000



939 ★★ **10c, Perf 12, Orange Yellow, #400** **\$130**
 N.h., fresh, overall very fine, 1996 PF cert. Scott \$270 Est. \$150/180

940 ★★ **10c, Perf 12, Orange Yellow, Strip of 3, #400** *Web* **\$100**
 N.h., imprint, fresh, just fine. Scott \$810+ Est. \$150/200



941 ★★□ **10c, Perf 12, Orange Yellow, Block of 4, #400** **\$200**
 N.h., top pair bit of blue ink on gum, inclusion lower left copy, very well centered, very fine and attractive. Scott \$1,080 Est. \$300/400



942 ★★ **10c, Perf 12, Orange, #400A** **\$350**
 N.h., rich color, nearly extremely fine, 2001 PF cert. Scott \$400 Est. \$400/450



943 ★ **10c, Perf 12, Orange, #400A** **\$100**
 Very l.h., extremely fine to superb Grade 95, 2011 PSAG cert. Scott Stamp Values \$350 Est. \$120/150

944 ★★ **10c, Perf 12, Orange, #400A** **\$80**
 N.h., fine to very fine. Scott \$400 Est. \$120/140

945 ★★□ **10c, Perf 12, Orange, Block of 4, #400A** *Web* **\$150**
 Marginal, top with h.r., lower left n.h., lower right l.h., centered, fine to very fine. Scott \$940+ Est. \$250/300



946 ★★□ **10c, Perf 12, Orange, Plate Block of 6, #400A** **\$3,000**
 N.h., wide side pl. #6143, staple holes in selvage, fine to very fine. Scott \$20,000 Est. \$4,000/5,000

947 ★□ **5c, Perf 10, Block of 4, #403** *Web* **\$130**
 L.h. to o.g., well centered, overall very fine. Scott \$700 Est. \$200/250

Lot Description Start Bid



948 ★★ **10c, Perf 10, #404** **\$700**
 N.h., selvage copy, centered for this, overall very fine. Scott \$1,700+ Est. \$700/850



949 ★★ **10c, Perf 10, #404** **\$450**
 N.h., fresh, very fine. Scott \$1,700 Est. \$700/800

950 ★ **10c, Perf 10, #404** **\$180**
 O.g. (h.r.), nicely centered, overall very fine. Scott \$700 Est. \$250/300



951 ★ **10c, Perf 10, #404** **\$140**
 Slightly dist. o.g., fine to very fine. Scott \$700 . Est. \$200/250

952 ★ **10c, Perf 10, #404** **\$110**
 Slightly dist o.g., reperfed, fine. Scott \$700 Est. \$150/200



953 ★★ **1912, 1c, Horizontal Coil, Line Pair, #412** **\$110**
 N.h., Grade 80 very fine, 2016 PSE cert. Scott \$260 Est. \$150/200

954 ★★ **1914, 20c Ultramarine, #419** **\$90**
 N.h., "small gum skip", centered, very fine, 2001 PF cert. Scott \$400 Est. \$130/160

Lot Description Start Bid



955 ★★ **1914, 30c Orange Red, #420** **\$110**
 N.h., well centered, very fine to extremely fine, 2008 PF cert. for block. Scott \$250 Est. \$150/200

956 ★★ **1912, 50c Violet, D.L. Watermark, #422** **\$400**
 N.h., large copy, very fine or better, 1997 PF cert. Scott \$500 Est. \$400/500

957 ★★ **1912, 50c Violet, D.L. Watermark, #422** **\$325**
 N.h., fresh, overall very fine, 2003 PSE cert. Scott \$500 Est. \$325/375



958 ★★ **1912, 50c Violet, D.L. Watermark, #422** **\$300**
 N.h., fresh, fine to very fine, 2000 PF cert. Scott \$500 Est. \$300/350

959 ★★ **1912, \$1 Violet Brown, #423** **\$400**
 N.h., fine to very fine, 1989 PF cert. for block. Scott \$1,000 Est. \$400/500

1913-15 Perforate 10 Issue



960 ★ **1c to 50c Complete, #424-440** **\$325**
 Very l.h. to o.g., fresh throughout, fine to very fine. Scott \$1,376 Est. \$350/450

961 ★★ **4c Brown, #427** **\$110**
 N.h., large copy, very fine to extremely fine, 1987 PF cert. Scott \$75 Est. \$110/130

962 ★★□ **5c, Plate Block of 6, #428** *Web* **\$100**
 N.h., wide side pl# 7238, fine to very fine. Scott \$650 Est. \$150/200

963 ★□ **9c, Plate Block of 6, #432** *Web* **\$140**
 L.h., small top #6907. Scott \$725 Est. \$200/250

Lot Description Start Bid Lot Description Start Bid



964 ★★ **50c Violet, #440** \$250
N.h., slight offset, fine to very fine. Scott \$1,050
..... Est. \$250/300

965 ★★ **50c Violet, #440** \$200
N.h., small gum skip at top perf, fine. Scott \$1,050
..... Est. \$200/250



966 ★ **50c Violet, #440** \$200
O.g., fresh, fine to very fine, 1979 PF cert. Scott \$450
..... Est. \$200/250

967 ★ **50c Violet, #440** \$150
O.g., well centered, very fine. Scott \$450 Est. \$200/250

968 ★ **50c Violet, #440** \$100
O.g., "reperfed at right", very well centered, extremely fine
appearance, 2011 PSE, 2004 APS (sound) certs. Scott \$450
..... Est. \$120/150



969 ★★ **1914, 2c, Horizontal Flat Plate
Coil, Line Pair, #444** \$250
N.h., bright color, very fine, 1989, 1993 PF certs. Scott \$650
..... Est. \$250/300



970 ★★ **1914, 3c, Horizontal Flat Plate
Coil, Line Pair, #445** \$750
N.h., gum creases, perfect centering, extremely fine
appearance. Scott \$2,600 Est. \$750/900



971 ○ **1914, 4c, Horizontal Flat Plate Coil,
Pair, #446** \$150
Used, fine to very fine. Scott \$425 Est. \$170/200

972 ★★ **1914, 5c, Horizontal Flat Plate Coil,
Line Pair, #447** \$100
N.h., fine to very fine, 1999 PF cert. Scott \$525
..... Est. \$150/200



973 ○ **1915, 2c Red, Type I, Vertical Rotary
Coil, #449** \$200
Roller cancel, fine, 2007 PSE cert. Scott \$600 Est. \$200/250

974 ○ **1915, 2c Red, Type I, Vertical Rotary
Coil, #449** \$180
Roller cancel, fine, 2005 PF cert. Scott \$600 .. Est. \$200/250

975 ☒ **1915, 2c, Type I, Vertical Rotary
Coil on 1916 Cover, #449** *Web* \$200
Fine on "window envelope with NY return address, 1916
New York machine cancel", generally fine to very fine, 2003
PF cert. Scott \$1,500 Est. \$300/400

1914-15 Perforate 10 Coils Horizontal



976 ★★ **2c, Type I, Rotary, Line Pair, #453** \$500
N.h., well centered, fine or better, 2001 PF cert. Scott \$1,450
..... Est. \$500/600



977 ★★ **2c, Type II, Rotary, Pair, #454** \$70
N.h., very fine, 2016 PSE cert. Scott \$360 Est. \$100/150

Lot Description Start Bid



- 978 ★★ **2c, Type II, Rotary, Line Pair, #454** \$400
N.h., centered, very fine, 1993 PF cert. Scott \$850 Est. \$400/500
- 979 ★★ **2c, Type II, Rotary, Line Pair, #454** \$150
N.h., almost very fine. Scott \$850 Est. \$200/250

Lot Description Start Bid



- 986 ★★ **1914, 2c, Imperf Horizontal Coil, Pair, #459** \$150
N.h., without crease, very fine. Scott \$600 Est. \$200/250
- 987 ★★ **1914, 2c, Imperf Horizontal Coil, Line Pair, #459** \$350
N.h., without crease, good to large margins all round, very fine, 2001 APS cert. Scott \$1,500 Est. \$500/600



- 980 ★★ **3c Violet, Rotary, #456** \$150
N.h., very fine. Scott \$475 Est. \$150/200
- 981 ★ **3c, Rotary, Line Pair, #456** \$400
Very l.h., great centering, nice color, Grade 85 very fine to extremely fine, 2016 PF cert., Scott Stamp Value \$1350 Est. \$500/600



- 988 ★★ **1915, \$1 Violet Black, D.L. Watermark, Perf 10, #460** \$350
N.h., small gum skip, a fine set. Scott \$1,450 .. Est. \$350/400

1916-17 Perforate 10 Issue



- 982 ★ **3c, Rotary, Line Pair, #456** \$400
O.g., centered, very fine. Scott \$1,250 Est. \$400/500



- 989 ★★ **5c Carmine, Error, #467** \$200
N.h., fine. Scott \$850 Est. \$250/300



- 983 ★★ **5c, Rotary, Line Pair, #458** \$180
N.h., well centered, very fine. Scott \$350 Est. \$200/250



- 990 ★★ **5c, Error in Strip of 3, #467** \$550
N.h., Grade 80 very fine, 2013 PSAG cert. Scott \$850 Est. \$600/700



- 984 ★★ **5c, Rotary, Line Pair, #458** \$150
N.h., fine, 1991 PF cert. Scott \$350 Est. \$150/200



- 985 ★★ **5c, Rotary, Line Pair, #458** \$110
N.h., very fine, 2009 PF cert. Scott \$350 Est. \$150/200

- 991 ★★ **5c, Error in Strip of 3, #467** \$200
N.h., 2c values hinged, fine. Scott \$850+ Est. \$250/300

Lot Description Start Bid Lot Description Start Bid



992 ★★□ **5c, Error in Block of 9, #467** \$400
N.h. (error), fresh, very fine. Scott \$950+ Est. \$400/500



993 ★□ **5c, Error in Block of 9, #467** \$230
5c very l.h., otherwise o.g., fine. Scott \$950 Est. \$300/350



994 ★★□ **5c, Double Error in Sheet of 100, #467** \$700
N.h., couple of gum bends, selvage piece detached at top right corner, pencil notations in selvage by pl. blocks, errors, decent centering, fine to very fine. Scott \$3,400+ Est. \$1,000/1,300

995 ★□ **8c, Plate Block of 6, #470** *Web* \$150
O.g. (h.r.) one copy, others n.h., bottom "A" #5719, fine. Scott \$680 + singles) Est. \$200/250



996 ★★★□ **15c, Pl. # Block of 4, #475** \$240
N.h. (2), o.g. (2), fine. Scott \$775 Est. \$300/400



997 ★ **30c Orange Red, #476A** \$300
O.g., Plate 6917, Pos. 71, "diagonal crease at left and reperfored, Rare, fine to very fine appearance, 2016 PF cert. Scott \$3,600 Est. \$500/600

998 ★ **\$1 Violet Black, #478** \$270
Very l.h., choice very fine. Scott \$625 Est. \$300/350

999 ★ **\$1 Violet Black, #478** \$250
L.h., immaculate and very fine. Scott \$625 Est. \$250/300



1000 ★ **\$1 Violet Black, #478** \$200
O.g. (h.r.) nice color, fine to very fine. Scott \$625 Est. \$200/250

1001 ★★ **1917, \$2 Dark Blue, #479** \$200
N.h., large copy, excellent color, very fine, 2002 PSE cert. for block. Scott \$475 Est. \$200/250

1002 ★★ **1917, \$5 Light Green, #480** \$180
N.h., very fine. Scott \$375 Est. \$200/250

1003 ★ **1917, \$5 Light Green, #480** *Web* \$130
L.h., corner copy with pre-perf selvage foldover, very fine. Scott \$170+ Est. \$130/150

Lot Description Start Bid Lot Description Start Bid

1917-19 Perforate 11 Issue



- 1004 ★★ **1c, Imperf Between, Horizontal Pair, #498b** **\$1,100**
 N.h., in bottom right corner pl. block of 12, pos. 5 l.h. (not affecting pair), showing engraver's initials, choice very fine, great positional piece. Scott \$1,350+ Est. \$1,100/1,300
- 1005 B★ **1c, A.E.F. Booklet Pane of 30, #498f** *Web* **\$300**
 O.g. (h.r.), fine to very fine. Scott \$1,050 Est. \$400/500



- 1006 ★★□ **2c, Type Ia, Block of 4, #500** **\$400**
 N.h., 1 with unpunched holes, centered right, fresh, just fine. Scott \$2,200 Est. \$400/500
- 1007 ★ **3c, Type II, Imperf Horizontally, Vertical Strip of 3, #502c** *Web* **\$100**
 O.g., "crease at top of bottom stamp" (the damaged copy), perf touch, 2007 PSE cert. Scott \$1,400 Est. \$150/200
- 1008 ★★□ **5c, Error in Block of 9, #505** *Web* **\$180**
 N.h., two 2c l.h., unusual shade, very fine. Scott \$625+ Est. \$250/300
- 1009 ★★□ **5c, Error in Block of 9, #505** *Web* **\$140**
 N.h., error small inclusion on reverse, block o.g., fine to very fine. Scott \$625+ Est. \$200/250
- 1010 ★★□ **5c, Error in Block of 9, #505** *Web* **\$140**
 N.h., one 2c l.h., unusual shade, fine. Scott \$625+ Est. \$200/250



- 1011 ★★□ **5c, Error in Complete Sheet of 100, #505** **\$300**
 Error n.h., some hinge reinforcing, decent centering for block, fine to very fine. Scott \$1,000+ Est. \$350/450



- 1012 ▲ **5c Rose, Error, #505** **\$200**
 Used on piece, fine to very fine. Scott \$600+ . Est. \$200/250
- 1013 ★□ **5c, Double Error in Block of 4, #505** *Web* **\$100**
 O.g., one with h.r. and other l.h., fine to very fine. Scott \$700 Est. \$150/200



- 1014 ★★□ **5c, Double Error in Block of 12, #505** **\$300**
 One n.h., one l.h., small trivial thin on top middle 2c, Grade 95 otherwise very fine. Scott \$1,300 Est. \$400/500

Lot Description Start Bid Lot Description Start Bid



1015 ★★□ **5c, Double Error in Block of 12, #505** \$300
 Errors n.h., block o.g., fine to very fine. Scott \$1,300 + (hinged) Est. \$400/500



1016 ★★□ **5c, Double Error in Complete Sheet of 100, #505** \$400
 Errors n.h., hinged at top, lower left selvage piece reattached and few perf seps. affecting error block, fine. Scott \$2,000 + Est. \$500/700



1017 ○ **6c Red Orange, Perf 10 At Top, #506a** \$1,600
 Scranton, PA precancel, "small diagonal crease", nicely centered, fine and scarce, 2015 PF cert. Scott \$8,000 Est. \$1,600/2,000



1018 ○ **8c Olive Bister, Perf 10 At Top, #508c** \$900
 "Anderson/IND" precancel, "with transitional perfs at top...small scrape and margin nick at top", scarce, 2012 PF cert. Scott \$9,000 Est. \$1,000/1,200

1019 ★★□ **11c, Plate Block of 6, #511** Web \$80
 N.h., large top #13469, hinged ungummed selvage only, well centered, very fine. Scott \$260 Est. \$100/120



1020 ○ **11c Light Green, Perf 10 At Top, #511a** \$400
 "Minneapolis/Minn" precancel, "bottom left corner mostly torn away and reattached", scarce, 1961, 2012 PF certs. Scott \$3,750 Est. \$400/500

1021 ★★ **1917, 2c Carmine, D.L. Watermark, Perf 11, #519** \$300
 N.h., fine to very fine, 1983 PF cert. for pair. Scott \$850 Est. \$300/350

1022 ★★ **1917, 2c Carmine, D.L. Watermark, Perf 11, #519** \$200
 N.h., fine. Scott \$850 Est. \$200/250

1918 Bi-Color Issue



1023 ★★ **\$2 Orange Red & Black, #523** \$200
 N.h., nice color, very fine. Scott \$1,150 Est. \$200/300

1024 ★ **\$2 Orange Red & Black, #523** \$150
 Very l.h., shifted vignette, signed on back, otherwise fine to very fine. Scott \$525 Est. \$200/230

1025 ★ **\$2 Orange Red & Black, #523** \$150
 L.h., nice color, and well centered, very fine. Scott \$525 Est. \$200/250

Lot Description Start Bid Lot Description Start Bid



1026 ★□ **\$2, Centerline Block of 4, #523** \$350
 O.g., small thin on lower left stamp, great color, otherwise fine to very fine. Scott \$2,500 Est. \$500/600



1027 ★★ **\$5 Deep Green & Black, #524** \$550
 N.h., extremely fine to superb, 2000 PF, 2007 PSE certs. Scott Stamp Values \$875 Est. \$550/650

1028 ★★ **\$5 Deep Green & Black, #524** \$90
 N.h., very fine, 2015 PSE cert. Scott \$360 Est. \$140/180



1029 ★□ **\$5, Block of 4, #524** \$170
 O.g. (h.r.), rich color and great centering, very fine. Scott \$725 Est. \$250/300

1030 ★★□ **1920, 2¢, Offset, Type IV, Plate Block of 6, #526** Web \$120
 N.h., large top #10831, minor natural gum streak, well centered, sharp color, overall very fine. Scott \$450 Est. \$150/200

1031 ★□ **1918, 2¢, Offset, Type VI, Plate Block of 6, #528A** Web \$100
 Large side #11694, o.g. (h.r.), centered, fine to very fine. Scott \$425 Est. \$140/160

1918-20 Imperforate Offset Issue



1032 ★★□ **2¢, Type IV, Plate Block of 6, #532** \$200
 N.h., large top #10864, gum bends and wrinkles, very fine. Scott \$625 Est. \$250/300

1033 ★★□ **2¢, Type IV, Plate Block of 6, #532** Web \$100
 N.h., wide side pl. #10918, small spot on gum, fine. Scott \$625 Est. \$150/200

1034 ★★□ **2¢, Type V, Block of 4, #533** Web \$140
 N.h., nice margins all round, very fine. Scott \$520+ Est. \$200/250



1035 ★□ **2¢, Type V, Plate Block of 6, #533** \$150
 L.h., small bottom pl. #11260, small gum crease, fine. Scott \$1,100 Est. \$250/300



1036 ★ **2¢ Carmine, Type VII, #534B** \$550
 Very l.h., good to large margins all round, very fine, 2000 PF cert. Scott \$2,000 Est. \$800/1,000

Lot Description Start Bid Lot Description Start Bid



1037 ○ **1919, 3c Victory, Deep Red Violet Shade, #537a** **\$325**
Used, "central thinning", otherwise fine, 2006 PF cert. Scott \$1,750, *rare used* Est. \$400/500

1038 ★★□ **1919, 2c, Type III, Rotary Coil Waste, #540** **Web \$1,500**
Mostly n.h., numerous plate blocks of 4 (with star), plate blocks with S30 and plate blocks of 6 (no star) with various plate numbers, difficult to dupl. today, must be seen to appreciate, fine or better. Scott \$25,000+ Est. \$2,000/2,500



1039 ○ **1923, 1c, Rotary Sheet Waste, Perf 11, #544** **\$1,000**
Used, "pinhole at upper left and corner crease at upper right", better centering than normal, attractive very fine appearance, 1993 PSE cert. Scott \$3,750 . Est. \$1,200/1,400

1040 ○ **1923, 1c, Rotary Sheet Waste, Perf 11, #544** **\$900**
Used, "tiny thin spot", usual centering, fine appearing, 1982 PF cert. Scott \$3,750 Est. \$900/1,000



1041 ☒ **1923, 1c, Rotary Sheet Waste, Perf 11 on Postcard, #544** **\$1,000**
Corner crease top left, fine, tied on creased card by "APR 11 1924 Portland, OR" slogan cancel, to the Dalles. Scott \$7,500, *one of very few known* Est. \$1,300/1,600



1042 ★★ **1920, \$2 Carmine & Black, #547** **\$80**
N.h., very fine, 2006 PF cert. Scott \$270 Est. \$100/130



1043 ★★□ **1920, \$2, Centerline Block of 4, #547a** **\$350**
N.h., rich color, very fine. Scott \$1,700 as singles Est. \$500/600

1044 ★★□ **1920, 1c Pilgrim, Sheet of 70, #548** **Web \$100**
N.h., #12421, fresh, fine overall. Scott \$780+ Est. \$140/180

1922-25 Regular Issue



1045 ○ **2c Carmine, Perf 10 At Top, #554d** **\$1,500**
Machine cancel, "2 improved perfs at left perfs 3 and 4 from top", very rare, otherwise fine, 2016 PSAG cert. Scott \$9,500 *census records 21 used singles, four contained in a block and four covers, for a total of 29* Est. \$2,000/3,000

1046 ★□ **4c, Plate Block of 6, #556** **Web \$90**
L.h., large top #14797, very well centered, extremely fine. Scott \$250 Est. \$120/150

1047 ★★□ **8c, Plate Block of 6, #560** **Web \$150**
N.h., large bottom #16795, rich color, fine. Scott \$900 Est. \$200/250

1048 ★★□ **9c, Plate Block of 6, #561** **Web \$100**
N.h., large side #15235, nicely centered, fine to very fine. Scott \$400 Est. \$130/160

1049 ★★□ **10c, Plate Block of 6, #562** **Web \$100**
N.h., large top #16381, nice centering, very fine. Scott \$425 Est. \$150/200

1050 ★★□ **15c, Plate Block of 6, #566** **Web \$100**
N.h., small top #18928, small adherence on reverse, centered, very fine. Scott \$425 Est. \$140/160

1051 ★★□ **\$1, Plate Block of 6, #571** **Web \$100**
N.h., large bottom pl.# 18642, very fine. Scott \$525 Est. \$150/200

<i>Lot</i>	<i>Description</i>	<i>Start Bid</i>
1052 ★★□	\$5, Arrow Block of 4, #573 N.h., very fine. Scott \$800	Web \$150 Est. \$250/300
1053 (★)□	\$5, Plate Block of 6, #573 Unused, top margin #14326, centered, very fine	Web \$250 Est. \$250/300



1054 ★□	1923, 2¢, Rotary Coil Waste, Plate Block of 4, #579	\$250
	Very l.h., well centered for the issue, slight ink run. Scott \$550	Est. \$250/300



1055 ★★□	1923, 2¢, Rotary Coil Waste, Plate Block of 4, #579	\$150
	N.h., top pl.# 14921, nice color and fresh, very fine. Scott \$900	Est. \$200/250



1056 ★★	1923, 2¢, Rotary Coil Waste, #595	\$150
	N.h., fine, photocopy of 2012 Weiss cert. for block. Scott \$475	Est. \$150/180
1057 ★★	1923, 2¢, Rotary Coil Waste, #595	\$140
	N.h., fine, photocopy of 2012 Weiss cert. for block. Scott \$475	Est. \$150/180

<i>Lot</i>	<i>Description</i>	<i>Start Bid</i>
1058 ○	1929, 2¢, Horizontal Coil, Types II & I, Line Strip of 4, #599A, 599 Used, #599 at left and 599A at right, light crease along top not seen from front, still rare, fine. Scott \$1,035+	Web \$100 Est. \$150/200

1059 ★★	1929, 2¢, Horizontal Coil, Type II, Strip of 4, #599A	Web \$150
	N.h., fine to very fine. Scott \$800	Est. \$200/300



1060 ★★	1929, 2¢, Horizontal Coil, Type II, Line Pair, #599A	\$150
	N.h., fine, 2001 PF cert. Scott \$1,150	Est. \$250/300



1061 ★★	1929, 2¢, Horizontal Coil, Type II, Line Pair, #599A	\$150
	N.h., fine. Scott \$1,150	Est. \$200/250

1062 ☒	1923, 2¢ Harding on Covers, #610	\$70
	210+ oversized incl. registry, irregular block of 7, advertising, multiple frankings, mixed issues, minor faults	Est. \$100/150

1063 ★★	1924, Huguenot-Walloon Complete, #614-616	Web \$80
	N.h., Grade 95 extremely fine to superb, 2010 PSE cert. Scott Stamp Values \$361	Est. \$120/140

1064 ★★□	1925, 5¢ Norse-American, Plate Block of 8, #621	Web \$200
	N.h., top #16957, 16925, centered, very fine. Scott \$750	Est. \$250/300

1065 ★★□	1925, 5¢ Norse-American, Plate Block of 8, #621	Web \$150
	N.h., top pl.# F16928, 16925, very fine. Scott \$750	Est. \$200/250

1066 ★★□	1926, White Plains Sheet, #630	Web \$200
	N.h., excellent centering, very fine to extremely fine. Scott \$600	Est. \$250/300

1067 ★★□	1926, White Plains Sheet, #630	Web \$150
	N.h., nice centering, very fine. Scott \$600	Est. \$200/250

1068 ★★	1927, 1¢ to 10¢, #632//642	\$140
	N.h., all graded 95, consisting of 1¢, 1½¢, 4¢, 5¢, 6¢, 7¢, 10¢, extremely fine to superb. SMQ \$660	Est. \$200/250

Lot Description Start Bid

1926-34 Perforate 11x10½ Issue



- 1069 ★★ **2c Carmine, #634A** **\$150**
N.h., fine, photocopy of 2012 Weiss cert. for block. Scott \$650 Est. \$150/180
- 1070 ★★ **2c Carmine, #634A** **\$150**
N.h., fine, photocopy of 2012 Weiss cert. for block. Scott \$650 Est. \$150/180
- 1071 ★★ **2c Carmine, #634A** **\$150**
N.h., fine, photocopy of 2012 Weiss cert. for block. Scott \$650 Est. \$150/180



- 1072 ★★ **2c Carmine, #634A** **\$150**
N.h., tiny spot on gum, otherwise fine to very fine. Scott \$650 Est. \$150/200
- 1073 ★★ **2c Carmine, #634A** **\$150**
N.h., fine to very fine. Scott \$650 Est. \$150/200
- 1074 ★★ **2c Carmine, #634A** **\$150**
N.h., fine to very fine. Scott \$650 Est. \$150/200



- 1075 ★★ **2c Carmine, #634A** **\$150**
N.h., strong color, fine to very fine. Scott \$650 Est. \$150/200
- 1076 ★★ **2c Carmine, #634A** **\$140**
N.h., fine, photocopy of 2012 Weiss cert. for block. Scott \$650 Est. \$140/180

Lot Description Start Bid

1929 Kansas-Nebraska Issue



- 1077 ★★□ **Sets Complete, Plate Blocks of 4, #658-679** **\$1,600**
N.h., 3¢ Kansas extra ink on two copies. Scott \$9,970 Est. \$2,000/2,500
- 1078 ★★□ **Kansas 1¢ to 10¢ Complete, Block of 4, #658-668** *Web* **\$350**
N.h., nice centering, one 2¢, 7¢ small black adherence, one 10¢ with small gum spot, overall very fine. Scott \$1,726 Est. \$500/700
- 1079 ★★□ **Kansas 1¢ to 10¢ Complete, Blocks of 4, #658-668** *Web* **\$300**
N.h., incl. marginal, decent centering, fine to very fine. Scott \$1,726 Est. \$400/500
- 1080 ★★□ **8¢ Kansas, Plate Block of 4, #666** *Web* **\$200**
N.h., fine to very fine. Scott \$925 Est. \$200/250
- 1081 ★★□ **8¢ Kansas, Plate Block of 4, #666** *Web* **\$150**
N.h., pl. #18191, fresh, fine to very fine. Scott \$925 Est. \$200/250
- 1082 ★★ **Nebraska Set to 10¢, #669-679** *Web* **\$500**
N.h., all graded 95 (no 9¢), extremely fine to superb, 2006 to 2014 PSE certs. SMQ \$2,515 Est. \$600/800
- 1083 ★★□ **5¢ Nebraska, Plate Block of 4, #674** *Web* **\$70**
N.h., pl. #18907, fine to very fine. Scott \$400 Est. \$100/120



- 1084 ★★ **1931, 2¢ Yorktown, Dark Lake & Black Color Error, #703b** **\$150**
N.h., corner copy, fine, 1981 PF cert. for pair. Scott \$750+ Est. \$150/200

Lot Description Start Bid Lot Description Start Bid



1085 ★★ **1931, 2¢ Yorktown, Dark Lake & Black Color Error, #703b** **\$150**
 N.h., fine, 1992 PF cert. Scott \$750 Est. \$150/200



1086 ★★ **1933, 5¢ Kosciuszko, Imperf Vertically, Horizontal Pair, #734a** **\$1,400**
 N.h., fine to very fine scarce, 1995 PF cert. Scott \$2,750, *only 1-2 panes issued* Est. \$1,400/1,700

1087 (★)□ **1935 Farley 3¢ Mothers Day, Century of Progress, Byrd, and National Parks, #754, 766a-770a** **\$250**
 Ungummed, complete uncut sheets, very fine. Brookman \$1,865 Est. \$350/400

1088 B★★ **1938, 3¢ Booklet Pane of 6 Study, Booklet Pane of 6, #807a** **\$150**
 123 copies mostly n.h., each showing a diff. plate number/pos. (54 of the 63 numbers represented), incl. 95 "left" pos. panes (upper and lower) and 28 of the much scarcer right pos. panes, plate numbers range from 5% to 100%+, nice specialist lot, fine to very fine. Durland \$7,620 Est. \$200/300



1089 ★★□ **1938, 30¢ Presidential, Deep Blue Shade, Plate Block of 4, #830b** **\$200**
 N.h., lower left pl# 22164, heavy offset on back, otherwise fine to very fine. Scott \$1,400 Est. \$300/400

1090 ★★□ **1938, \$5 Presidential, Corner Block of 4, #834** **Web \$100**
 N.h., very fine. Scott \$305+ Est. \$140/180

1091 ☒ **1941 Pearl Harbor Cover** **Web \$100**
 1½¢ Presidential tied by dated Dec. 7, Honolulu, Hawaii 11-AM, probably from a George Blanchard Riley (1920-2009), Comm. Office N.yd, Pearl Harbor, Hawaii, has censor tape, additional pencil "B" and purple 3942 with 2 crossed out by pencil and overwritten by "1" in pencil, addressed to G.E. Lodge, with an address crossed out and forwarded, *looks consistent with other covers from that infamous date, poor condition but very rare* Est. \$150/250

1092 ★★ **1954, 2¢ Jefferson, Silkote Paper, #1033a** **Web \$200**
 N.h., 6 copies on written up page, fine to very fine, *all signed in very light pencil by the chemist Frederick Frost who worked for the S.D. Warren Paper Co. who developed the paper*. Scott \$1,650 Est. \$300/400



1093 ★★ **1962, 5¢ Washington, Imperf Between, Horizontal Pair, #1213d** **\$150**
 N.h., se. at bottom, "2 diagonal creases (foldovers) one of which ends with a nick at bottom", scarce, 2007 PSE cert. Scott \$1,500 Est. \$200/300

1094 ★★□ **1974, 10¢ Energy Conservation, Orange & Green Omitted, Plate Block of 4, #1547b** **Web \$250**
 N.h., #35121, fine to very fine, 2012 PSE cert. Scott \$1,400 + (singles), *only 150-250 issued* Est. \$350/450



1095 ★★□ **1975, 10¢ Griffith, Brown (Engraved) Omitted, Pl. Block of 4, #1555a** **\$350**
 N.h., corner "with pl. no. omitted", 2007 PSE cert. Scott \$1,900 + (singles), *only 50-100 stamps issued* .. Est. \$450/550

Lot Description Start Bid Lot Description Start Bid



1096 ★★□ **1979, 15c Toleware, Imperf Horizontally, Se-Tenant Block of 6, #1778b** **\$350**

N.h., "light crease in upper right stamp...natural gum skip in left center stamp", fine to very fine, 2007 PSE cert. Scott \$2,500 (for block), *only one pane issued* Est. \$600/800

1097 ★★□ **1993, 29c Williams, Perf 11.2 by 11.5, Complete Sheet of 50, #2723A** **\$100**

N.h., very fine. Brookman \$675 Est. \$150/200



1098 ★★ **1998, H Rate Yellow Hat Unissued** **\$1,000**

N.h., very fine, *see footnote in Scott 2016* PSE cert. Scott \$3,000 Est. \$1,000/1,200

Airpost

1918 Issue



1099 →★★□ **6c, Plate Block of 6, #C1** **\$200**

N.h., narrow top pl. #9155, fine to very fine. Scott \$1,000 Est. \$300/350



1100 →★★□ **6c, Plate Block of 12, #C1** **\$300**

N.h., narrow top pl. #9155 plate block of 6 with 6 extra singles, minor natural gum skips and small inclusion on one, otherwise fine to very fine. Scott \$1,720 Est. \$400/450



1101 →✉ **6c First Flight Cover, #C1** **\$200**

Very fine tied by Dec 16 1918 NY cancel and purple Air Mail Service Dec 16 1918 cancel on corner card From Scott Stamp Co. to West Park Ohio, fine to very fine. Scott \$2,000 Est. \$300/400

1102 →★★□ **16c, Block of 4, #C2** *Web* **\$100**

N.h., well centered, very fine. Scott \$520 Est. \$150/180

1103 →★★□ **16c, Plate Block of 6, #C2** *Web* **\$150**

O.g., narrow top pl. #8900, very fine. Scott \$900 Est. \$200/300

1104 →★★□ **24c, Block of 4, #C3** *Web* **\$150**

N.h., pl. #8493 and blue top, lovely item, great color, small gum skip on upper left stamp, very fine. Scott \$560+ Est. \$250/350

1105 →★★□ **24c, Block of 4, #C3** *Web* **\$120**

N.h., top marginal, one with gum skips, very well centered, very fine. Scott \$560+ Est. \$150/200

1106 →★★ **24c, Block of 6, #C3** *Web* **\$150**

N.h. (5), o.g. marginal, few gum skips, fine. Scott \$770+ Est. \$200/250



1107 →★★□ **24c, Plate Block of 12, #C3** **\$300**

N.h., narrow top pl. # 8493, 8492, small gum skip on upper left stamp, otherwise fine to very fine. Scott \$2,000 Est. \$400/500

Lot Description Start Bid Lot Description Start Bid

1108 **24¢ on First Trip Cover, #C3** *Web* **\$100**
 Straight edge on left tied by Washington May 15, 1918 duplex cancel, New York May 16 receiving cancel on reverse, generally fine to very fine. Scott \$750 . Est. \$150/200



1112 **1923, 24¢, Plate Block of 6, #C6** **\$450**
 N.h., large bottom pl. #14843, very fine. Scott \$2,750
 Est. \$600/700

1109 **1923, 16¢, Plate Block of 6, #C5** **\$500**
 N.h., wide side #14829, nicely centered, very fine, 2004 PF cert. Scott \$2,150 Est. \$600/800



1113 **1928, 10¢ Lindbergh Pane on FDC, #C10a** **\$200**
 Fine to very fine tied to registered Hotel Cleveland cover by Cleveland Midwestern Philatelic May 26, 1928 to Boston Mass., transit and receiving cancels on reverse. Scott \$800
 Est. \$300/350



1114 **1928, 10¢ Lindbergh Pane on FDC, #C10a** *Web* **\$150**
 Nice margins all around tied by May 26 1928 Washington D.C. cancel, fine to very fine. Scott \$875 Est. \$200/300

1110 **1923, 16¢, Plate Block of 6, #C5** **\$350**
 N.h., large top pl. #14828, fine to very fine. Scott \$2,150
 Est. \$500/600



1115 **1928 Zeppelin Flight on Roessler Card, Sieger #22A** **\$150**
 Oct 28th 1928 cancel with tied red label by "First Flight Airmail", purple cancel and 1¢ Washington with Graf Zeppelin overprint on Souvenir card, fine to very fine
 Est. \$200/250

1111 **1923, 24¢, Plate Block of 6, #C6** **\$600**
 N.h., large top #14840, decent centering, very fine, undated PSE cert. Scott \$2,750 Est. \$700/800

Lot Description Start Bid Lot Description Start Bid

1930 Graf Zeppelin Issue



1116 →★★ **Set Complete, #C13-C15 \$700**
 N.h., bottom pl. # singles, C14 gum skips, nice centering, a very fine set. Scott \$1,875+ Est. \$1,000/1,200



1117 →★★★ **Set Complete, #C13-C15 \$600**
 C13 l.h., C14 small gum wrinkle, C15 pl# 20090 with slight gum skip at bottom, fine to very fine. Scott \$1,790 Est. \$700/800



1118 →★★ **Set Complete, #C13-C15 \$400**
 N.h., nicely center, gum skip on C14 and some slight toning on C15, otherwise very fine. Scott \$1,875 Est. \$600/700



1119 →★★ **Set Complete, #C13-C15 \$400**
 O.g., well balanced set, \$2.60 small (h.r.) others l.h., otherwise very fine. Scott \$1,165 Est. \$600/700



1120 →★★ **Set Complete, #C13-C15 \$400**
 O.g., well centered set, very fine. Scott \$1,165 Est. \$600/700



1121 →★★□ **Set Complete, Plate Blocks of 6, #C13-C15 \$5,000**
 N.h., C13 bottom pl. #20079, C14 bottom pl. #20085, C15 top. pl. 20092, all with usual natural gum skips and bends, C14 lower left small gum skip and C15 couple separated perf in selvage, otherwise very fine. Scott \$16,950 Est. \$6,000/8,000

Lot Description Start Bid Lot Description Start Bid



1122 →○ **Set Complete, #C13-C15** **\$300**
Used, fine. Scott \$1,140 Est. \$400/500



1123 →○ **Set Complete, #C13-C15** **\$280**
Used, 65¢ small repair, fine. Scott \$1,140 Est. \$375/425



1124 →★ **65c Green, #C13** **\$80**
O.g., nice color and well centered, very fine. Scott \$190
..... Est. \$100/120

1125 →☒ **65c on Zeppelin Cover, #C13** *Web* **\$80**
Fine to very fine, tied with May 20 1930 cancel on Europe-Pan America round flight postcard, fine to very fine. Scott \$165 Est. \$120/150

1126 →☒ **65c on Zeppelin Cover, #C13** *Web* **\$80**
Very fine, tied by May 29 1930 Washington DC cancel, on Europe-Pan America round flight postcard. Scott \$165
..... Est. \$100/120

1127 →☒ **65c, 2 Copies on Zeppelin Cover, #C13** *Web* **\$150**
Fine to very fine copies tied with May 1 New York cancel, flight cachets in red and violet, Lakehurst May 31, 1930 cancel in green on postcard, fine to very fine. Scott \$330+
..... Est. \$200/250



1128 →☒ **65c, \$1.30 on FDC, #C13, C14** **\$300**
Very fine with C13 (2) and C14 tied by Washington DC APR 19 1930 cancel, minor corner crease and tear on backflap, otherwise very fine. Scott \$1,000+ .. Est. \$400/500



1129 →★ **\$1.30 Brown, #C14** **\$280**
N.h., very fine, photocopy of 1998 PF cert. for block. Scott \$650 Est. \$300/350



1130 →★ **\$1.30 Brown, #C14** **\$100**
O.g., very well centered, very fine. Scott \$400 Est. \$150/200



1131 →○ **\$1.30 Brown, #C14** **\$130**
Used, pl. # single, fine to very fine. Scott \$375+
..... Est. \$150/200



1132 →○ **\$1.30, \$2.60, #C14-C15** **\$250**
Used, C15 wrinkle, fine. Scott \$975 Est. \$300/400

Lot Description Start Bid Lot Description Start Bid



1133 →☒ **\$1.30, \$2.60 on Zeppelin Cover, #C14-C15 \$300**
 Fine to very fine tied by APR 29 1930 New York cancel with flight cachets in red and violet Via Steamer to Germany and purple stamp marking with "This article made the complete round trip", fine to very fine. Scott \$975+ Est. \$400/500



1134 →★★ **\$2.60 Blue, #C15 \$400**
 N.h., pl. # single, fine to very fine. Scott \$975+ Est. \$400/450



1135 →★★ **\$2.60 Blue, #C15 \$300**
 N.h., very fine. Scott \$975 Est. \$450/500



1136 →★★ **\$2.60 Blue, #C15 \$200**
 L.h., very fine. Scott \$575 Est. \$300/400



1137 →★★ **\$2.60 Blue, #C15 \$170**
 O.g., well centered, very fine. Scott \$575 Est. \$220/300

1138 →☒ **\$2.60 on 1930 South America Flight Cover, #C15 Web \$150**
 Tied by Varick St Apr 30 cancel with "First Europe Pan-American Round Trip" cachet, from Friedrichshafen to Lakehurst, some toning on cover, otherwise fine to very fine. Scott \$625 Est. \$200/250

1139 →☒ **\$2.60 on 1930 South America Flight Cover, #C15 Web \$150**
 Fine, tied by APR 29 Varick cds to Washington, some ink marking on face, fine. Scott \$625 Est. \$200/250

1140 →☒ **\$2.60 on 1930 South America Flight Cover, #C15 Web \$150**
 Fine to very fine, tied by Varick St. APR 28 1930 cancel, with "First Europe Pan-American Round Trip" cachet, from Friedrichshafen to Lakehurst, minor corner crease on cover, otherwise fine to very fine. Scott \$625 Est. \$200/250

1141 →☒ **\$2.60 on 1930 South America Flight Cover, #C15 Web \$150**
 Slight corner crease tied by Apr. 30 1930 Varick St. Sta. cds, from Friedrichshafen to Lakehurst, otherwise fine to very fine. Scott \$625 Est. \$200/250

1933 Century of Progress Issue

1142 →★☐ **50c, Plate Block of 6, #C18 Web \$150**
 N.h., top pl. #21172, fine to very fine. Scott \$700 Est. \$250/300

1143 →★☐ **50c, Plate Block of 6, #C18 Web \$100**
 Very l.h, bottom pl# 21172 small reinforcement in selvage, otherwise very fine. Scott \$500 Est. \$120/150

1144 →★☐ **50c, Sheet of 50, #C18 Web \$1,000**
 N.h., pl. # 21172 at top and selvage at right, very fine. Scott \$4,710 Est. \$1,500/2,000

1145 →★★ **50c Group of 10, #C18 Web \$70**
 10 hinged incl. pairs, one with small thin. Scott \$500 Est. \$100/150

1146 →★★ **50c Group of 14, #C18 Web \$150**
 N.h., small thin spot on Plate single, otherwise very fine. Scott \$1,190 Est. \$250/300

1147 →★★ **50c Group of 45, #C18 Web \$500**
 N.h., incl. multiples, fine to very fine. Scott \$3,825+ Est. \$700/900

1148 →○ **50c Group of 12 Used, #C18 Web \$80**
 12 used incl. 2 pairs and block of 4, fine to very fine. Scott \$570+ Est. \$120/140

1149 →☒ **1935 Mass Naval Flight Hawaii to Johnston Island, French Frigate Shoal Web \$150**
 Tied by Nov 8 1935 cds from Honolulu Air Squadron Base to French Frigate Shoals and returned to Honolulu, complete set of 4 with green cachet, generally fine to very fine, only 25 sets made Est. \$200/300

Lot Description Start Bid Lot Description Start Bid



1150 ➔★□ **1938, 6¢ Eagle, Imperf Horizontally, Block of 4, #C23a** \$100
L.h., marginal, weak vert. perfs., very fine. Scott \$600
..... Est. \$150/200

Special Delivery



1156 ★★ **1895, 10¢, Dots in Curved Frame Above Messenger, #E5a** \$100
N.h., fine to very fine. Scott \$750 Est. \$150/200

1157 ★★ **1902, 10¢ Ultramarine, #E6** \$100
N.h., few tiny gum skips, fresh, fine. Scott \$525
..... Est. \$130/160



1151 ★★ **1894, 10¢ Blue, Unwatermarked, #E4** \$500
N.h., reperfed at left, excellent color, attractive very fine appearance. Scott \$2,250 Est. \$500/600



1158 ☒ **1908, 10¢ Green on Cover, #E7** \$250
Fine to very fine, along with 3 2¢ Washingtons on 1909 cover from Menlo Park, CA to passenger on ship sailing from N.Y.C. for Europe with marking "Rec'd to late/Ship sailed", some small tears in envelope, otherwise fine to very fine, *Ex Spelman sale 5/82* Est. \$500/600



1152 ★ **1894, 10¢ Blue, Unwatermarked, #E4** \$400
L.h., rich color, very fine, 2000 PSE cert. Scott \$900
..... Est. \$400/500

1153 ★ **1894, 10¢ Blue, Unwatermarked, #E4** \$300
L.h., rich color, fine to very fine, 2013 PSE cert. Scott \$900
..... Est. \$300/350



1159 ★★ **1914, 10¢ Ultramarine, #E9** \$260
N.h., pl. # single, excellent color, choice very fine, 2009 PF cert. Scott \$425+ Est. \$300/350



1154 ★★ **1895, 10¢ Blue, #E5** \$180
N.h., imprint single, "small natural gum skip", excellent color, very fine, 2012 PSE cert. Scott \$500+ . Est. \$200/240

1155 ★★ **1895, 10¢ Blue, #E5** \$100
N.h., fresh, fine to very fine. Scott \$500 Est. \$140/180



1160 ★ **1916, 10¢ Pale Ultramarine, #E10** \$450
Very l.h., large copy, choice extremely fine, 1990, 2007 PF certs. Scott Stamp Values \$575+ , *PSE census only 3 graded higher hinged, 3 with same grade* Est. \$500/600

Lot Description Start Bid Lot Description Start Bid



- 1161 ★★ **1916, 10c Pale Ultramarine, #E10** \$300
N.h., fresh, fine to very fine and attractive, 1997, 2010 PSE certs. Scott \$700 Est. \$300/350
- 1162 ★★ **1916, 10c Pale Ultramarine, #E10** \$140
N.h., pl. # single, excellent color, fine to very fine. Scott \$700+ Est. \$200/250



- 1163 ★□ **1916, 10c, Plate # Imprint Block of 6, #E10** \$800
Very l.h., large top #5520, excellent gum, Fine to Very Fine, fine to very fine. Scott \$5,000 Est. \$1,000/1,400
- 1164 ★★ **1927, 10c, Imperf Between, Horizontal Pair, #E15c** Web \$100
N.h., fine to very fine. Scott \$500 Est. \$150/200

Postage Dues

See lots 354, 355



- 1165 ★★ **1891, 10c Bright Claret, #J26** \$100
N.h., fresh, almost very fine. Scott \$500 Est. \$140/180
- 1166 ★ **1894, 1c Vermilion, #J29** \$600
O.g., "2 added perforation tips at left", fine to very fine appearance, 2012 PSAG cert. Scott \$2,250 Est. \$600/800
- 1167 ★★ **1894, 2c Vermilion, #J30** \$700
N.h., very fresh, very fine, 2014 PSE cert. Scott \$1,900 Est. \$600/700



- 1168 ★ **1894, 2c Deep Vermilion, #J30** \$140
O.g., fresh, fine to very fine, 2004 PF cert. Scott \$775 Est. \$200/250



- 1169 ★★□ **1914, 10c, Plate Block of 6, #J56** Web \$160
N.h., large top #6555, rich color, fine. Scott \$800 Est. \$200/250
- 1170 ○ **1914, 50c Carmine Lake, #J58** \$300
Used, fine to very fine, 1993 PF, 2016 PSAG certs. Scott \$1,600 Est. \$400/500

Offices in China

1919-22 Issues



- 1171 ★ **2c to \$2 Complete, #K1-K18** \$450
O.g. (h.r.), incl. "a" numbers, K18 used, dupl. 2c, 4c, 14c, fresh group, fine to very fine. Scott \$2,667 Est. \$600/800



- 1172 ★ **2c to \$2 Complete, #K1-K18** \$375
O.g., few with h.r., on page, 12c oxidized, fine to very fine. Scott \$2,255 Est. \$500/700
- 1173 ★★ **4c to 30c, #K2//K12** Web \$110
7 values, 4c, 18c n.h., others l.h. to o.g., better than usual centering, choice very fine. Scott \$582 Est. \$150/200
- 1174 ★★ **8c to 1922 Set, #K4//K18** Web \$250
N.h., 8 values, decent centering, fine to very fine Est. \$400/500

We are now accepting consignments for the August APS auction in Richmond, VA.

Lot Description Start Bid Lot Description Start Bid



1175 ★★□ **10¢ on 5¢, Plate Block of 6, #K5** \$300
 N.h., large side pl. #13274, gum bend, well centered, very fine. Scott \$1,100 Est. \$300/400



1176 ★★ **\$2 on \$1 Violet Brown, #K16** \$500
 N.h., margin copy and very nice centering, photocopy of 1988 PF cert. Scott \$1,000+ Est. \$500/600

1177 ★ **\$2 on \$1 Violet Brown, #K16** \$200
 O.g., small offset, very fine. Scott \$450 Est. \$200/230

1178 ○ **1922, 2¢ on 1¢, 4¢ on 2¢, #K17, K18** *Web* \$70
 Used with "U.S. Postal Agency Shanghai China" cancels, great centering, very fine. Scott \$425 Est. \$100/120



1179 ○ **Vending: Mail-O-Meter; 1916 1¢ Type IV Perfs, #481** \$200
 St. Louis precancel, showing full vending holes at left, fine, 2016 PSAG cert. Scott \$850 Est. \$200/250

1180 ○ **Vending: Schermack; 4¢ Orange Brown, Type III Perfs, #346** \$200
 Used, "Pattern 12 perforated control mark", showing complete holes at right, scarce, fine, 2014 APS cert. Scott \$1,500 Est. \$300/400



1181 ★ **Vending: Attleboro; 1909, 2¢ Alaska-Yukon, #371** \$400
 O.g. (h.r.), "small thin at center", nick at right, 2010 PSAG cert. Scott \$3,250, *rare* Est. \$500/700

Officials



1182 ★ **Agriculture Dept., 1873, 1¢-30¢ Complete, #O1-O9** \$300
 O.g. to unused, mostly fresh colors, fine to very fine overall. Scott \$3,035 Est. \$400/500

1183 S **Agriculture Dept., 1875 Special Printing, 1¢, Overprinted "Specimen", Ribbed Paper, #O1SDb** \$350
 Ungummed, fine. Scott \$2,500 Est. \$500/600

1184 S **Agriculture Dept., 1875 Special Printing, 6¢, Overprinted "Specimen", #O4SD** \$130
 Ungummed, fine to very fine. Scott \$400, 373 issued Est. \$150/200

1185 P **Executive Dept., 1873, 3¢, Trial Color Large Die Proof, #O12TC1ae** *Web* \$100
 75mm by 90mm, clean, immaculate and very fine. Scott \$500 Est. \$150/180



1186 ○ **Executive Dept., 1873, 6¢ Carmine, #O13** \$100
 Used, sound, fine to very fine, 2016 PSAG cert. Scott \$550 Est. \$150/200

1187 ○ **Executive Dept., 1873, 10¢ Carmine, #O14** \$200
 Cork cancel, fine to very fine. Scott \$800 Est. \$250/300

Lot Description Start Bid Lot Description Start Bid

1188 ★ **Interior Dept., 1873, 1¢-90¢ Complete, #O15-O24** *Web* \$120
 O.g. to no gum incl. high values, fresh overall and sound, fine to very fine overall. Scott \$737 Est. \$150/180



1189 ★★ **Interior Dept., 1873, 6¢ Vermilion, #O18** \$70
 N.h., imprint margin copy, nice color, very fine, 2010 PSAG cert. Scott \$160+ Est. \$100/110

1190 S **Interior Dept., 1875 Special Printing, 24¢, Overprinted "Specimen", #O22SD** \$700
 Ungummed, lovely color and impression, fine to very fine rare. Scott \$2,500, 77 issued Est. \$700/900



1191 S **Justice Dept., 1875 Special Printing, 3¢, Overprinted "Specimen", #O27SD** \$400
 Ungummed, scarce, fine to very fine for this. Scott \$1,250, 178 issued Est. \$450/550



1192 S **Justice Dept., 1875 Special Printing, 3¢, Overprinted "Specimen", #O27SD** \$200
 Ungummed, clipped or short perfs, excellent color, scarce, fine for the issue. Scott \$1,250, 178 issued Est. \$250/300

1193 S **Justice Dept., 1875 Special Printing, 24¢, Overprinted "Specimen", #O32SD** \$220
 Ungummed, few clipped perfs and se. at top, rich color, scarce, fine. Scott \$1,250, 150 issued Est. \$250/300



1194 ★□ **Navy Dept., 1873, 30¢, Block of 4, #O44** \$200
 Full o.g., few short perfs, very fresh, fine. Scott \$1,600 Est. \$300/400

State Department



1195 ★ **1873, 1¢-90¢ Values, #O57-O67** \$450
 O.g. to part o.g. (h.r.), 30¢ unused, excellent colors, sound throughout, fine to very fine set. Scott \$3,975 . Est. \$550/650

1196 S **1875 Special Printing, 1¢, Overprinted "Specimen" (Error), #O57SDa** \$900
 Ungummed, excellent color, overall very fine. Scott \$1,900, rare Est. \$1,000/1,300



1197 S **1875 Special Printing, 12¢, Overprinted "Specimen", #O63SD** \$140
 Ungummed, few clipped perfs, rich color, fine. Scott \$550, 280 issued Est. \$160/200

1198 S **1875 Special Printing, 15¢, Overprinted "Specimen", #O64SD** \$130
 Ungummed, se. at top, fresh, fine. Scott \$600, 257 issued Est. \$150/200

Lot Description Start Bid Lot Description Start Bid



1199 ○ **1873, \$2 Green & Black, #O68** **\$700**
 Oval cancel, nice color for this, fine to very fine, 2016 PSAG cert. Scott \$3,000 Est. \$1,000/1,400



1200 ○ **1873, \$5 Green & Black, #O69** **\$1,000**
 One of the lighter cancels known, "small thins at center and light horizontal wrinkle", fine to very fine appearing, 2016 PSAG cert. Scott \$13,000, *most of the few known genuinely used examples of the \$5 State Department stamp have faults to a greater or lesser degree; maybe half dozen known* Est. \$1,500/2,000



1201 ★ **1873, \$10 Green & Black, #O70** **\$900**
 O.g. (h.r.), fresh, overall very fine, 2016 PSAG cert. Scott \$4,500 Est. \$1,300/1,600



1202 (★) **1873, \$20 Green & Black, #O71** **\$280**
 Unused, "small thin at top left corner", fresh, fine to very fine appearance, 2016 PSAG cert. Scott \$2,250 Est. \$400/500

1203 S **Treasury Dept., 1875 Special Printing, 1¢-2¢, Overprint "Specimen", #O72-73SD** **Web \$100**
 Ungummed, 2¢ se. at top, excellent colors, fine to very fine. Scott \$530 Est. \$120/140



1204 S **Treasury Dept., 1875 Special Printing, 2¢, Overprint "Specimen", #O73SD** **\$150**
 Ungummed, sharp color, fine to very fine. Scott \$450, *309 issued* Est. \$150/200



1205 S **Treasury Dept., 1875 Special Printing, 12¢, Overprint "Specimen", #O78SD** **\$500**
 Ungummed, excellent color, almost very fine. Scott \$1,600, *75 issued* Est. \$600/700



1206 S **War Dept., 1875 Special Printing, 7¢, Overprinted "Specimen", #O87SD** **\$70**
 Ungummed, fine to very fine. Scott \$425 Est. \$100/120



1207 (★) **Agriculture Dept., 1879, 1¢ Yellow, #O94** **\$700**
 Ungummed, centered top right, sound, fine to very fine for the issue, 1978 PF cert. Scott \$6,000 Est. \$1,000/1,400



1208 ★ **Interior Dept., 1879, 24¢ Vermilion, #O103** **\$250**
 Large part o.g., "small thinning and light horiz. crease", centered left, typical condition for this item, fair, 1978 PF cert. Scott \$4,500, *scarce* Est. \$400/600



1209 ★★ **Official Mail: 1988, 25¢ Coil, Imperf, Pair, #O141a** **\$150**
 N.h., nice margins all round, very fine. Scott \$1,000, *40-50 reported* Est. \$250/300

Lot Description Start Bid Lot Description Start Bid

Newspaper Stamps



- 1210 (★) **1865, 5c Dark Blue, #PR1** \$500
Ungummed, centered, scarce sound, very fine, 2004 PF cert. Scott \$750 Est. \$550/600
- 1211 (★) **1865, 10c Blue Green, #PR2** Web \$200
Ungummed, well centered, sharp color, very fine or better, 2004 PF cert. Scott \$300 Est. \$200/250
- 1212 ○ **1865, 10c Blue Green, #PR2** \$150
Centered target cancel, creases as to be expected, otherwise sound, slight soiling, fine for this, signed ms. JW Scott on reverse. Scott \$2,000, *scarce* Est. \$250/350
- 1213 (★) **1875 Reprint, 5c Dull Blue, #PR5** Web \$150
Ungummed, centered, choice very fine, 2004 PF cert. Scott \$225 Est. \$150/180

- 1216 (★) **1875 Special Printing, 12c Pale Rose, #PR40** \$600
Ungummed, sound, nicely centered, very fine, 2016 PSE cert. Scott \$1,500 Est. \$600/800



- 1217 (★) **1875 Special Printing, 24c Pale Rose, #PR41** \$325
Ungummed, ragged perfs at left, sound, fine. Scott \$2,100 Est. \$325/375
- 1218 (★) **1875 Special Printing, 48c Pale Rose, #PR43** \$600
Ungummed, sound, fine and scarce. Scott \$4,000 Est. \$600/800



- 1214 ★ **1875, \$6 Ultramarine, #PR26** \$600
O.g., "pulled perf at top", nice color, fine, 2008 PF cert. Scott \$3,600 Est. \$700/900
- 1215 ○ **1875, \$6 Ultramarine, #PR26** \$300
Blue brush cancels, minor perf faults, scarce, good color, fine for this. Scott \$2,000 Est. \$400/500

- 1219 ★ **1879, 12c Red, #PR63** \$300
L.h., Grade 85 very fine to extremely fine, 2003, 2015 (graded) PF, 2002 PSE certs. Scott Stamp Values \$650 Est. \$300/350
- 1220 ★ **1879, 60c Red, #PR67** \$200
L.h., toned spot, "light natural gum crease", rich color, fine, 2014 PF cert. Scott \$1,000 Est. \$200/250

Lot Description Start Bid Lot Description Start Bid



1221 ★ **1879, \$24 Dark Violet, #PR76 \$250**
Full o.g., deep shade, very fine, 1997 PF cert. Scott \$800
..... Est. \$300/400



1222 (★) **1883 Special Printing, 2c Intense Black, #PR80 \$400**
Ungummed, fresh, fine to very fine, 1995, 2003 PF certs.
Scott \$1,700, 4514 issued Est. \$500/600



1225 ★ **1895, \$2 Scarlet, #PR108 \$600**
Full o.g., rich color, very fine. Scott \$2,250 Est. \$750/900



1226 ○ **1895, \$2 Scarlet, #PR108 \$230**
Attractive oval cancel, fresh, nearly very fine. Scott \$1,100
..... Est. \$300/400



1223 ★ **1894, 24c Pink, #PR96 \$1,000**
L.h., few wrinkles, fresh, 1984, 2002 PF certs. Scott \$3,750
..... Est. \$1,200/1,400



1227 ★ **1895, \$10 Green, #PR110 \$600**
Full o.g., excellent color, fine to very fine, 1993, 2005 PF
certs. Scott \$2,500 Est. \$800/1,000



1228 ★ **1895, \$50 Dull Rose, #PR112 \$600**
L.h., rich color, fine, 1997 PF cert. Scott \$2,900
..... Est. \$700/900



1224 ★★ **1895, 50c Carmine, #PR107 \$1,700**
N.h., imprint selvage copy, very nice centering, very fine or
better, 2010 PF cert. Scott \$6,250 Est. \$2,000/2,400



1229 ★★ **Parcel Post: 1913, \$1, #Q12 \$130**
N.h., nice centering, overall very fine. Scott \$650
..... Est. \$200/250



1230 ★★ **Parcel Post Postage Due: 1913, 10c, #JQ4 \$80**
N.h., nicely centered, choice very fine, 2001 PF cert. Scott \$300
..... Est. \$100/140

Lot Description Start Bid Lot Description Start Bid



1231 **Local: Bicycle Mail Route, Ca; 1894, 25¢ on Cover, #12L2 \$400**
 With #220, both tied by "JUL 10 1894" cds, local usage, advert on reverse, a very fine cover. Scott \$2,000
 Est. \$600/800

Postal Stationery

Stamped Envelope Essays and Proofs

See lots 1429-1475, 1534-1535, 1584

1232 E **1866 Nesbitt & Co. 15¢ Lincoln Essay, Undersander #E25Aa Web \$140**
 Dark red on white vertically laid paper measuring 124x99mm, trivial soiling, very fine; quite scarce, particularly in such a large uncut format, *Ex Ainsworth, Brazer, realized \$360 in 2009 auction, most existing examples cut down to more "standard" cut square size* Est. \$200/250

1233 E **1866 Nesbitt & Co. 15¢ Lincoln, Undersander #E25Aa-d Web \$140**
 Four different, dark red on white vertically laid paper measuring 65x53mm, dark blue on white vertically laid paper (65x50mm), dark blue on white horizontally laid paper (31x30mm) and dark blue on buff colored vertically laid paper (65x33mm), very fine; scarce group, *Ex Ainsworth, Brazer, realized \$540 in 2009 auction* Est. \$200/250

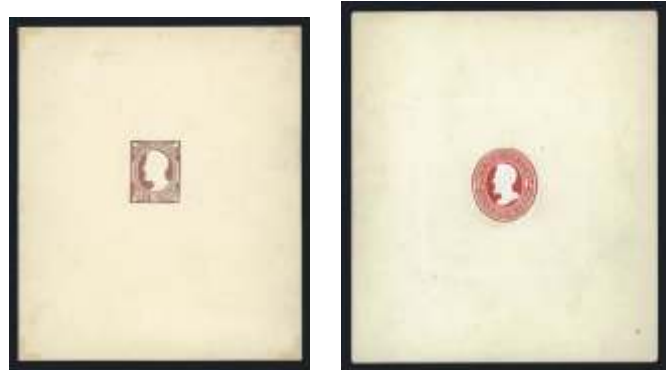
1234 E **1866 Nesbitt & Co. 3¢ Lincoln, Undersander #E25Ba, d Web \$140**
 Two different, one in pink on white wove paper cut square measuring 69x56mm, other in pink on canary colored vertically laid paper measuring 69x52mm, very fine and seldom seen, *Ex Ainsworth, Brazer . Undersander \$600, realized \$360 in 2009 auction* Est. \$200/300



1235 E **1866 Nesbitt & Co. 3¢ Lincoln, Albino Impression, Undersander #E25Bf \$100**
 On orange diagonally laid paper, full corner cut square measuring 38x41mm, very fine, *Ex Ainsworth, Brazer . Undersander \$300, realized \$228 in 2009 auction, the only example recorded* Est. \$150/200

1236 E **186? Nesbitt "Bull's-Eye", Undersander #E29 Web \$200**
 Around 70, various values, and designs, some cut-to-shape, fine overall Est. \$300/400

1237 E **1870 Reay 6c Lincoln Embossed, Undersander #E38Ba, c, d, f Web \$140**
 Three different colors in cut square size, in pink, purple (small mounting thin) and blue, plus a fourth on yellow brown but cut close to design (embossing cuts paper), mostly very fine, *Ex Ainsworth, Brazer . Undersander \$600, realized \$360 in 2009 auction* Est. \$200/250



1238 E **1870 George H. Reay 6c Lincoln Embossed in Pink, Undersander #E38Baa \$200**
 Bearing a single essay impression in the center of a 115x136mm sheetlet (after folding), with watermark "A. Pirie & Sons 1869", very fine and handsome, *Ex Brazer, Ainsworth . Undersander \$900, extremely rare full sheetlet, very few of the uncut sheetlets exist in any color* Est. \$300/400

1239 P **1870 6c Blue Trial Color Large Die Proof, Undersander #E38C var. Web \$140**
 In center of large piece of unwatermarked bond paper folded in half measuring 103x133mm (after folding), adopted design with uncleared surrounds, very fine, *Ex Ainsworth, Brazer, realized \$360 in 2009 auction, absolutely stunning and rare essay* Est. \$200/250

1240 P **1870 6c Dark Red, Large Die Hub Proof, Undersander #E38C1 \$150**
 Final adopted design with cleared surrounds in the issued color, die impression on large thin card measuring 119x137mm, very fine and exceedingly handsome, *Ex Wells, Ainsworth, the only recorded example, realized \$345 in 2009 auction* Est. \$250/300

1241 P **1874 to 1884 Stationery Trial Color Proofs, Twelve Entirets, Undersander #E69Aa/E87c Web \$200**
 Undersander #E69Aa, E69Ad, E81c (two shades), E81Aa, E81Ab, E81Ac, E81Ad, E81Af (two shades), and E87c (two, one with punch), Very Fine, *realized \$575 in 2008 auction* Est. \$300/400

1242 E **1907 Mercantile Essay Group Web \$100**
 Items consisting of cut squares Undersander #E111A, E126Aa-c, and E115Dd (Ex Barkhausen) entiret Est. \$150/200

Lot Description Start Bid Lot Description Start Bid

Issued Entires

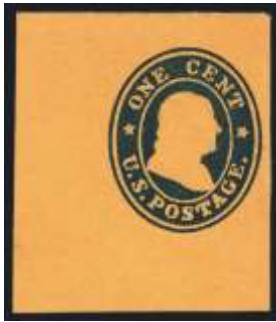


1243 ★☒ **1853, 3c Red, Die 1, Entire, #U1** \$200
 Size 2, knife 2, wmk. 1, elusive mint example of this extremely rare entire, the smaller and more desirable size 2 which is valued 20% higher in UPSS, light fold and insignificant reduction at left, faint soiling at bottom, still very fine, *Ex Barkhausen, Floyd, Flattery*. UPSS #1. Scott \$1,600 Est. \$300/400



1249 ★☒ **2c Black on Buff Die 1 Double Impression, Entire, #U46 var.** \$300
 Mint, clear doubling of the impression (incl. embossing), Very Fine and choice, *Ex Burrows, realized \$960 in 2003 auction, rare, unlisted in Scott* Est. \$400/500

1250 ★☒ **2c Black on Buff, Die 1 Variety, UPSS #103** Web \$150
 Entire, unused, size 7, knife 24, watermark 1, some mounting marks on reverse, still Very Fine and scarce. Scott #U46 var., *realized \$518 in 2011 auction* Est. \$200/250



1244 ★ **1860, 1c Blue on Orange, Die 2, Cut Square, #U23** \$130
 39x34mm mint with top flap, strong color and embossing, flap thinned, cut square very fine, *Ex Flattery* signed SS&CCO (Scott Stamp & Coin). Scott \$600. Est. \$200/250

1245 ★ **1860, 1c Blue Type 9 on Orange Wove Paper, Cut Square, UPSS #32** Web \$100
 28x33mm full corner mint, strong color and clear embossing, very fine and scarce, *Ex Flattery* 1987 PF cert. Scott #U24 var. UPSS \$600, *realized \$300+ in 2010 auction* Est. \$150/200

1246 ★☒ **1860, 3c + 1c Red & Blue, Entire, #U28** Web \$100
 Clean, very fine. Scott \$500 Est. \$150/200

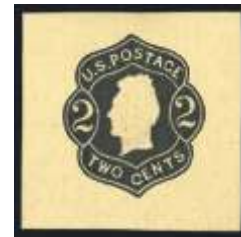
1247 ★☒ **1861, 12c to 40c Mint Entires, #U42-45** Web \$250
 Each with light vertical fold away from indicia, otherwise fine to very fine. Scott \$2,150 Est. \$400/500

1863-64 Jackson Issue

1248 ★☒ **2c Black on Buff, Die 1 With Sanitary Commission Design, #U46** Web \$100
 Entire, fresh and very fine, *Ex Burrows, see used example lot 661, realized \$300 in 2003 auction, Ex Burrows* Est. \$150/200



1251 P **2c Black on Buff, Die 2, Vertically Laid Paper Proof, Cut Square, #U48 var.** \$650
 Cut to 57 x 77mm, unused, Very Fine, very fine, *the vertically laid paper was used exclusively for wrappers, Die 2 is not listed as a wrapper, Ex Burrows, realized \$4300+ in 2003 auction, very rare* Est. \$1,000/1,500



1252 P **2c Black on Buff, Die 2, Vertically Laid Paper Proof, Cut Square, #U48 var.** \$450
 Unused, slight thinning, Fine, *the vertically laid paper was used exclusively for wrappers, Die 2 is not listed as a wrapper, Ex Burrows, realized \$4300+ in 2003 auction, very rare* Est. \$750/1,000

Lot Description Start Bid Lot Description Start Bid



1253 ★ 2c Black on Buff, Die 2, Entire, #U48 \$1,100
 Unused, sharp impression, very fine, *Ex Burrozas*. Scott \$4,500, realized \$8050 in 2003 auction, rare unused example, very few known Est. \$1,500/2,000

1254 ★ 2c Black on Orange, Die 4, UPSS #116 Web \$100
 Entire, unused, size 7, knife 24, watermark 1, strong colors, Very Fine and rare. Scott #U56 var., realized \$546 in 2011 auction Est. \$150/200



1255 ★ 2c Black on Orange, Die 4 Variety, UPSS #116-O \$150
 Entire, unused, size 7, knife 24u, watermark 0, light wrinkling Very Fine and rare, *Ex Barkhausen*. Scott #U56 var., realized \$431 in 2011 auction Est. \$250/350

1256 ★ 6c Lincoln, Reay Stamped Envelopes, With "Specimen" Overprints, #U85S-U87a Web \$450
 The marvelous mounted exhibition collection of 24 different envelopes collected by the various forms and sizes, in addition to the various colors of the indicia and the envelopes themselves, incredibly comprehensive and nearing completion, all wonderfully annotated on nine exhibition pages, all are quite fresh and very fine; an almost impossible group to duplicate today, *Ex Ainsworth, some Ex White*, realized \$1650 in 2009 auction Est. \$700/900

1257 ★ 6c Lincoln, Reay Stamped Envelopes, Specialized Mint Entires, #U85a-U87a Web \$400
 Mounted exhibition collection of 19 all different mint entires collected by the various sizes and knife types in all of the various colors of both the indicia and the envelopes themselves, essentially a complete collection as listed in the UPSS cat. (missing only two), wonderfully annotated on six exhibition pages, plus an additional page with two different size red on amber entires, each with "Wells, Fargo & Co." imprint (one mint, other unused), overall very fine, *Ex Ainsworth, several Ex Barkhausen or Haller*. UPSS #203/220, realized \$1650+ in 2009 auction ... Est. \$700/900



1258 ★ 1870, 10c Olive Black on Amber, Entire, #U90 \$200
 Die 39, size 7, knife 25, wmk. 2, flap soiling, clean on face, fine, *Ex Solens*. Scott \$1,000 Est. \$300/400



1259 ★ 1874, 2c Brown, Die 4, Entire, #U134 \$400
 Mint, size 6, knife 18, wmk. 2, doctor's return corner card and "Centennial Medical Commission of Philadelphia" imprint at top center, unsealed flap, very fine and rare, *Ex Flattery*. UPSS #309. Scott \$1,400, rarely offered, realized \$1950+ in 2010 auction Est. \$600/800

1260 ★ 1874, 2c Brown on Amber, Die 4, Cut Square, #U135 Web \$100
 Full corner, 55 x 50 mm, post office fresh and Extremely Fine. Scott \$425, realized \$311 in 2012 auction Est. \$140/180

1261 ★ 1884, 2c Brown on Amber, Cut Square, #U271 Web \$100
 Full corner, 46 x 48 mm, Extremely Fine and choice. Scott \$425, realized \$374 in 2011 auction Est. \$140/180



1262 ★ 1887, 1c Blue on Amber, Entire, UPSS #884-8 \$1,000
 Type 8 surcharge, bright color, an extremely fine cover, 2004 PF cert. Scott #U296 var., realized \$2860 in 2004 auction, Rare Postal Stationery Entire. Very Few Are Known Est. \$1,500/2,000

Lot Description Start Bid

1263 ★ **1887, 2¢ Green on Amber Manila, Die 3, Cut Square, #U323** *Web* \$100
 Full corner, 40 x 43 mm, fresh and Extremely Fine. Scott \$400, realized \$374 in 2011 auction Est. \$140/180



1264 ★ **1893, 5¢ Columbian, Slate Brown Color Error, Cut Square, #U350a** \$300
 Mint, huge 60x61mm full corner, slight overall toning, extremely fine and choice, *Ex Barkhausen, Flattery* 1990 PF cert. Scott \$800, realized \$970+ in 2010 auction Est. \$400/500



1265 ★ **1893, 5¢ Columbian, Slate Brown Color Error, Cut Square, #U350a** \$200
 Mint full corner, very fine to extremely fine. Scott \$800 Est. \$300/350

1266 ★ **1893, 5¢ Columbian, Slate Brown Color Error, Cut Square, #U350a** \$200
 Full corner, 48 x 46 mm, hinges on reverse, choice very fine. Scott \$800, realized \$575 in 2011 auction Est. \$250/300



1267 ★✉ **1899, 4¢ Brown on Amber, Die 1, Entire, UPSS #1346** \$260
 Mint entire, faint toning band in center, still very fine and extremely rare, *Ex Ainsworth, Wunsch*. Scott #U372 var. UPSS \$2,000, realized \$690 in 2009 auction, only three recorded examples of this entire Est. \$400/500

1907-16 Mercantile Issue



1268 ★✉ **1¢ Green, Die 1, Entire, #U400 var.** \$650
 2004 PSE cert., realized \$2860 in 2004 auction. Rare Postal Stationery Entire. Very Few Are Known Est. \$1,000/1,500



1269 ○✉ **1¢ Green on Blue, Die 3 Entire, #U403b** \$140
 Type 2, size 13, knife 78, wmk. 15, used, Chicago DEC 1 1911, slight edge toning at top, a very fine cover, *Ex Thomas Wooley*. UPSS #1567 \$500, probably only one a few known Est. \$200/300

1270 ★ **2¢ Brown Red on Amber, Die 2, Cut Square, #U407a** *Web* \$100
 Large 49x52mm full corner mint, good embossing that shows the die characteristics well, fresh and extremely fine, *Ex Flattery*. Scott \$350, scarcer than reflecting in cat. value, realized \$345 in 2010 auction Est. \$150/200



1271 ★✉ **2¢ Brown Red on Amber, Die 2, Entire, #U407a** \$200
 Size 10, knife 57, watermark 15, Ballard & Clark return address, two tiny stain spots, otherwise Very Fine, *Ex Marcus White*. UPSS #1608. Scott \$700, realized \$920 in 2011 auction Est. \$300/400

Lot Description Start Bid Lot Description Start Bid

1272 ★ **2c Brown Red on Blue, Die 2, Cut Square, #U409a** *Web* **\$100**
 45x47mm full corner mint, strong embossing that shows the die characteristics well, fresh and extremely fine, *Ex Flattery*. Scott \$375, *scarcer than reflecting in cat. value, realized \$480+ in 2010 auction* Est. \$150/200



1276 ★ **1916, 1c Green on Amber, Die 2, Cut Square, #U421a** *Web* **\$100**
 39x39mm mint, clean and fresh, extremely fine, *Ex Flattery*. Scott \$400, *very rare, realized \$345 in 2010 auction* Est. \$150/200



1273 ★ **5c Blue on Buff, Die 2, Color Error, Cut Square, #U418b** **\$1,000**
 Instead of white, 46x47mm full corner mint, wonderfully fresh, with deep color on unmistakable buff paper, extremely fine and very rare, *Ex Flattery*. Scott \$3,500, *probably on of the nicest known copies, realized \$6000+ in 2010 auction* Est. \$1,500/2,000



1277 ★✉ **1915, 2c Die 1, With Added Impression of 1c Green, #U429i** **\$220**
 Entire, size 7, knife 42, wmk. 20, with the 1c oval die mostly on right side flap, but also showing a bit in the top right corner and partly cut away by the knife, fresh and very fine, *this double impression of two different dies was caused by effort to economize on paper during WWI by running printed blanks of one size through press again to be cut to a smaller size, Ex Flattery*. Scott \$950, *rare, realized \$805 in 2010 auction*. Est. \$300/400



1274 ★ **5c Blue on Blue, Die 2, Color Error, Cut Square, #U418c** **\$1,000**
 Instead of white, 49x48mm full corner mint, rich color on strongly blued paper, fresh and extremely fine; only known as a cut square and very rare, *Ex Flattery*. Scott \$3,250, *very rare, realized \$3200+ in 2010 auction* Est. \$1,500/2,000



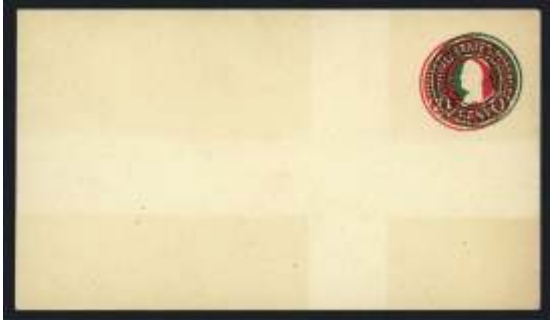
1278 ★ **1915, 2c Carmine, Die 1, With Added Impression of 1c Green, Cut Square, #U429j** **\$200**
 41x45mm full corner mint, fresh and very fine; a visually striking double impression error of two different circular dies, *Ex Flattery*. Scott \$600, *very rare, realized \$920 in 2010 auction* Est. \$300/350


1279 ★ **1915, 2c Carmine, Die 1, With Added Impression of 1c Green, Cut Square, #U429j** **\$140**
 Full corner, 50 x 49 mm, Extremely Fine and choice. Scott \$600, *realized \$575 in 2011 auction* Est. \$200/250


1275 ★ **5c Blue on Blue, Die 2, Color Error, Cut Square, #U418c** **\$700**
 Unused, an outstanding full corner with extremely large margins, measuring 42 x 47mm, trace of minor toning barely visible at right is of little or no consequence on a cut square of this major importance, choice very fine, *Ex Lilly, realized \$1725 in 2011 auction*. Scott \$3,250, *a rarity missing from some of the most advanced cut square collections* Est. \$1,000/1,400

"Web" indicates that the image(s) will be found on our website, www.harmershau.com.


Lot Description Start Bid Lot Description Start Bid



1280 ★ **1915, 2¢ Carmine, Die 1, With Added Impression of 1¢ Green, #U429j** \$250
Mint entire, size 8, knife 42, some very faint toning where there were no bands, still very fine and desirable, visually striking double impression error of two different circular dies, *Ex Flattery*. UPSS #CC-1. Scott \$1,000, *rare, realized \$1265 in 2010 auction* Est. \$350/450

1281 ★ **1932, 3¢ Purple, Die 9, Double Impression, #U436k** Web \$100
Entire, size 13, knife 78, die 20, remnants of pencil notation, fine to very fine. UPSS #2506-20. Scott \$600 Est. \$150/200

1282 ★ **1917, 3¢ Carmine on Amber, Die 5, Color Error, Cut Square, #U437g** Web \$110
Large 51x47mm full corner mint, incl. a portion of the window at lower left, extremely fine and scarce, *Ex Flattery*. Scott \$425, *realized \$460 in 2010 auction* Est. \$150/200

1283 ★ **1920-21 Revalued 2¢ on 3¢ Accumulation** \$200
Oldtime lot of hundreds mostly sorted by the various cities in envelopes, some dupl., virtually all identified, various sizes, excellent lot for the specialist, fine or better Est. \$300/500

1284 ★ **1920, 2¢ on 2¢ Carmine, Die 5, Cut Square, #U454b** Web \$100
Mint full corner, very fine. Scott \$500 Est. \$150/200



1285 ★ **1920, 2¢ on 2¢ Carmine on Amber, Die 1, Cut Square, #U455** \$300
Full corner, 39.5 mm square, fresh and Very Fine, 1998 PF cert. Scott \$1,250, *realized \$1035 in 2011 auction, Superlative Example of This Rare Cut Square* Est. \$400/500

1286 ★ **1920, 2¢ on 2¢ Carmine on Amber, Die 6, Cut Square, #U455a** \$400
Full corner, 44 x 43 mm, fresh and choice Extremely Fine, 2009 PF cert. Scott \$1,500, *realized \$1035 in 2011 auction, Excellent Example of This Rare Cut Square* Est. \$600/800

1287 ★ **1920, 2¢ on 4¢ Chocolate, Cut Square, #U462** Web \$110
43x48mm mint full corner example of this frequently misidentified cut square, fresh and extremely fine, *Ex Lilly, Flattery*. Scott \$500, *realized \$430 in 2010 auction* Est. \$150/200




1288 ★ **1920, 2¢ on 4¢ Chocolate on Amber, Cut Square, #U463** \$150
47x46mm full corner mint, rich color on fresh paper, extremely fine, very scarce and frequently misidentified cut square, *Ex Flattery*. Scott \$800, *realized \$920 in 2010 auction* Est. \$250/300



1289 ★ **1920, 2¢ on 5¢ Blue, Entire, #U464** \$350
Size 10, mint entire corner card, fresh, very fine, *Ex Barkhausen*. UPSS #2913-20. Scott \$1,800 .. Est. \$500/700

1290 ★ **1920, 2¢ on 3¢ Dark Violet on Amber, Die 1, #U476** Web \$110
UPSS die 143, size 13, knife 80, wmk. 19, choice mint entire with printed corner card of the Duncan National Bank of Duncan, Oklahoma, plus Bank slogan printed on the reverse, strong colors, extremely fine, *Ex Mason, Flattery* 2009 PSE cert. UPSS #3018-19. Scott \$475, *realized \$400+ in 2010 auction* Est. \$150/200



1291 ★ **1925, 1½¢ on 2¢ Green, Entire, #U486** \$300
Size 7, knife 31, wmk. 8, mint entire, bright color, a couple faint hinge marks on the front, still a very fine example of this scarce entire, *Ex Flattery*. UPSS #3078 \$2,750. Scott \$1,150, *the more elusive with type 8 watermark*. Est. \$400/500

Lot	Description	Start Bid
1292 ★	1925, 1½¢ on 2¢ Carmine on Blue, Die 1, #U504 <i>Web</i> \$100 Entire, size 13, knife 78, wmk. 27, very fine, <i>Ex Flattery</i> . UPSS #3180. Scott \$450 Est. \$150/200	
1293 ★	1979, 15¢ Veterinary Medicine, Gray Omitted, #U595a <i>Web</i> \$100 Entire, small size, very fine. Scott \$425 Est. \$120/140	
1294 ★	1988, 8.4¢ Frigate Constellation, Black Omitted, #U612a <i>Web</i> \$100 Mint #10 entire with printed corner card, Very Fine. Scott \$500 Est. \$150/200	
1295 ★	1991, 29¢ Love, Bright Rose Omitted, and Purple Omitted, #U621a-b <i>Web</i> \$140 Mint size 6? entire, other error with purple "29/U.S." omitted; also incl. another entire with purple U.S.P.S. "Sample" imprint, Very Fine. Scott \$600+ Est. \$200/250	
1296 ★	Airmail Envelopes: 1951 Air Letter Sheet, 10¢ Chocolate on Pale Blue, #UC16b <i>Web</i> \$100 Entire, very fine. Scott \$450 Est. \$140/180	
1297 ★	Airmail Envelopes: 1958, 10¢ Blue & Red on Blue, Type II, Red Omitted, #UC32b <i>Web</i> \$100 Entire, vert. crease, fine. Scott \$1,000 Est. \$150/200	
1298 ★	Official Envelopes: 1873, 2¢ Vermilion Specimen Overprint, #UO32S <i>Web</i> \$150 Entire, size 2, knife 27, Very Fine, <i>Scott retail as unused cut square, normal entire without "Specimen" catalogs \$25,000</i> . UPSS #WD25S, <i>realized \$575 in 2010 auction</i> Est. \$200/250	
1299 ★	Official Envelopes: Postal Savings, 1911, 1¢ and 2¢, #UO70-72 <i>Web</i> \$400 Collection which appears complete except for the error entire, variety of knives and watermarks, with 28 mint and used entires, some franked with additional stamps, registered usages, UO71 entires both used and unused, also incl. comprehensive display of 50 Postal Savings Penalty printed envelopes, fine to very fine. UPSS \$4,000, <i>realized \$1400+ in 2011 auction</i> Est. \$600/800	
1300 ★	Official Envelopes: Postal Savings, 1911, 2¢ Carmine on Manila, Color Error, #UO72a <i>Web</i> \$140 Entire, subsequently toned since issued cert., 1985 PF cert. Scott \$1,900, <i>scarce</i> Est. \$200/300	
1301 ○	Postal Card/Official: 1913, 1¢ Black, #UZ1 <i>Web</i> \$100 Hood River MAR 31 1914 cds, clean. Scott \$550 Est. \$140/180	

Revenues



1302 ○	1862, \$20 Probate of Will, Perfed, #R99c \$500 Bright, vibrant color with a neat 1864 handstamp cancel, fine to very fine, 2008 PSE cert. Scott \$3,000 Est. \$600/700
1303 ○	1862, \$20 Probate of Will, Perfed, #R99c \$350 1864 ms. cancel, sealed tear, scarce, fine appearing. Scott \$3,000 Est. \$400/500
1304 ★	1871 2nd Issue Set, Plate Proofs on Card, #R105P4-R131P4 <i>Web</i> \$150 Excellent colors with nice margins all round. Scott \$583 Est. \$200/250
1305 ○	1871, 50¢, Center Inverted, #R115b <i>Web</i> \$100 Ms. cancel, internal tear and filled thin, fresh, fine appearing. Scott \$1,250 Est. \$150/200
1306 P	1871-72 Third Issue Set, Plate Proofs on Card, #R134P4-R150P4 <i>Web</i> \$200 Excellent colors with nice margins all round, a very fine set. Scott \$727 Est. \$250/300



1307 ○	Documentary, 1872, \$20 Orange & Black, #R150 \$200 Used with freak perfs, fine to very fine. Scott \$750 Est. \$200/250
--------	---

Lot Description Start Bid Lot Description Start Bid



1308 ○ **Proprietary, 1874, \$1 Green & Black, Green Paper, #RB9b \$2,000**
 Nice handstamp cancel, small tear at left and small toning not on cert., otherwise very fine. *Ex. Cumliffe* 1977 PF cert. Scott \$12,500, *Larry Lyons lists seven used examples in his census* Est. \$2,500/3,000



1309 ○ **Proprietary, 1874, \$1 Green & Black, Green Paper, #RB9b \$2,000**
 Minor normal faults and very attractive with nice "Paris Allen & Co" handstamp and manuscript July 3 1882 cancel, otherwise very fine. Scott \$12,500, *Larry Lyons lists seven used examples in his census* Est. \$2,500/3,000



1310 ★ **Proprietary, 1898, 1/4c Battleship Trial Color, #RB21TC, #RB21TC1a \$300**
 In dull green, shows full die sinkage, tiny thin at bottom, Very Fine. Scott \$1,300, *realized \$690 in 2011 auction, only 2 or 3 known* Est. \$400/500



1311 ★★ **Stock Transfer, 1952, 20c, #RD367 \$200**
 N.h., choice very fine. Scott \$500 Est. \$200/250

1312 (★) **Silver Tax, 1944, \$100 Gray, #RG130 *Web* \$100**
 Ungummed, se. bottom, right, fine. Scott \$600 .. Est. \$150/200

Only 2 Known



1313 ○ **Private Die Medicine: Davis & Son, 2c Brown, Silk Paper, #RS80b \$1,500**
 Neat cancel, slightly faded, few faults, rare example, fine appearance, 2014 PSE cert. Scott \$10,000 . Est. \$2,000/3,000

Federal Hunting Permit



1314 ★★ **1935, \$1 Canvasbacks, #RW2 \$150**
 N.h., plate single #131981, some toning on selvage, very fine. Scott \$700+ Est. \$200/300

Lot	Description	Start Bid	Lot	Description	Start Bid
					
1315 ★	1935, \$1 Canvasbacks, #RW2	\$150			
	Very l.h., grade 95 extremely fine to superb, 2005 PSE cert. Scott Stamp Values \$425 Est. \$200/250		1329 ★★	War Savings: 1919, \$5, #WS4	\$250
1316 ★★	1935, \$1 Canvasbacks, #RW2	\$100		N.h., fine to very fine. Scott \$700 Est. \$250/300	
	N.h., short perf at top, otherwise very fine. Scott \$700 Est. \$150/200		<i>Test Stamp</i>		
1317 ★□	1945, \$1, Plate Blocks of 6, #RW12 <i>Web</i>	\$600	1330 ★	1989, 25c World Stamp Expo '89 Essay, #2410 <i>Web</i>	\$600
	Matched 3 sets of top and bottom #157248, or 157249, all well centered, one with gum not quite complete, others with light toning issues on reverse, also wrinkles and gum creases, fine overall. Scott \$4,800 Est. \$600/800			Unique large essay prepared by Richard Sheaff who is credited as the designer of the issued stamp which, while similar, came in a vertical format, very fine, <i>signed by Richard Sheaff</i> Est. \$1,000/1,200	
1318 ★★□	1953, \$2, Sheet of 28, #RW20 <i>Web</i>	\$400	1331 ★	1989, Set of BEP Proof Presses, #3209 A-I <i>Web</i>	\$100
	N.h., top pl. #163624, some very minor gum skips at top as normal for this, otherwise very fine. Scott \$2,350 Est. \$600/700			Black on glossy paper stock with BEP serial, log number in pen on back, very fine Est. \$150/200	
1319 ★★□	1955, \$2, Plate Block of 6, #RW22 <i>Web</i>	\$100	1332 ☒	199? Disney Stationery Essay <i>Web</i>	\$100
	N.h., short top pl. #165282, very fine. Scott \$575 Est. \$150/200			Avery Dennison corner card with proposed essay for Mickey Mouse entire with Mickey as Uncle Sam, very fine Est. \$150/200	
1320 ★★□	1957, \$2, Plate Block of 6, #RW24 <i>Web</i>	\$90	1333 ★□	1990, Avery Dennison Virginia State Seal Sample Sheet of 20 <i>Web</i>	\$90
	N.h., pl. #166257, very fine. Scott \$575 Est. \$120/150			From the presentation book "Ideas from Avery Dennison, perforated Self-Adhesive stamps for the target markets, great Seals of the fifty states", four different States were presented in the book, Wyoming, Florida, North Carolina and Virginia with two sheets of 20, each one perforated and the other rouletted, this is one of those sheets Est. \$150/180	
1321 ★★□	1958, \$2, Plate Block of 6, #RW25 <i>Web</i>	\$100	1334 ☒	1993, Greetings From Missouri and Texas Essays <i>Web</i>	\$250
	N.h., top pl. #166753, very fine. Scott \$575 ... Est. \$140/170			Affixed to two different covers autographed and signed by the designer, Richard Sheaff, we are told that only 5 or 6 were made but likely not all survived, very fine Est. \$400/500	
1322 ★★□	1959, \$3, Plate Block of 4, #RW26 <i>Web</i>	\$100	1335 ★□	1997 Avery Dennison Book of 8 Sample Sheets <i>Web</i>	\$300
	N.h., very fine. Scott \$550 Est. \$150/200			Book "Ideas from Avery Dennison, perforated Self-Adhesive Stamps for Target Markets, Great Seals of the Fifty States", these were likely present at a U.S.P.S. design retreat, staff and art director to prove Avery's capabilities to sell their concept of state seal stamps, four different States were chosen for this presentation, Wyoming, Florida, North Carolina and Virginia, two sheets of each were included, perforated and rouletted, very fine Est. \$500/600	
1323 ★★	1960, \$3 Redhead Ducks, #RW27 <i>Web</i>	\$80			
	N.h., Grade 98 superb, 2005 PF cert. Scott Stamp Values \$360 Est. \$120/140		1336 ★	Photo Essay Lot	\$150
1324 ★★□	1960, \$3, Plate Block of 4, #RW27 <i>Web</i>	\$80		26 different, according to Jim Lee "These photos are reduction of original artwork or designs used to model the issued stamps, the reduction brought the design closer to the actual size of the final engraving" and incl. a promotional item of #2475, very fine Est. \$200/300	
	N.h., pl. #167498, very fine. Scott \$400 Est. \$120/140				
1325 ★★□	1962, \$3, Plate Block of 4, #RW29 <i>Web</i>	\$100			
	N.h., pl. #168037, very fine. Scott \$500 Est. \$150/200				
1326 ★★□	1963, \$3, Plate Block of 4, #RW30 <i>Web</i>	\$80			
	N.h., pl. #168269, very fine. Scott \$450 Est. \$120/140				
1327 ★★□	1964, \$3, Plate Block of 6, #RW31 <i>Web</i>	\$300			
	N.h., bottom pl. #168629, 2 staple holes in selvage, very fine. Scott \$1,950 Est. \$400/500				
1328 ★★□	1965, \$3, Plate Block of 4, #RW32 <i>Web</i>	\$80			
	N.h., pl #168791, very fine. Scott \$450 Est. \$120/140				

Lot Description Start Bid Lot Description Start Bid



1337 ★ **Confederacy: 1862, 10c Rose, #5** \$1,000
Full o.g., large margins all round, very fresh, very fine to extremely fine, 2011 PF cert. Scott \$2,000.. Est. \$1,400/1,800

1338 ☒ **Confederacy: 1862, 10c on Cover, #5** Web \$150
Nice margins all around, very fine, tied by Richmond, VA 1862 clear postmark, addressed to Danville, Va, Very Fine. Scott \$800 Est. \$250/300



1339 ★★ **Confederacy: 1863, 10c Blue, #11** \$100
N.h., huge margins, pos. 6, Grade 100J superb, 2016 PSE cert Est. \$150/200

U.S. Possessions

1340 ○ **Canal Zone: 1904, First Issue Complete, #1-3** Web \$150
Used on piece, folded but not affecting stamps, fine to very fine. Scott \$820 Est. \$200/250

1341 ☒ **Canal Zone: 1904, 10c on 1904 Cover, #3** Web \$80
Fine to very fine tied by Jul 12th 1904 Ancon to Jas Hyatt in Colon with July 13 1904 Cristobal receiving cancel, very clean, opened at right side, very fine appearance, signed Bartels. Scott \$325 Est. \$100/150

1342 ★ **Canal Zone: 1924, 1c, Flat "A", "Zone Canal", #71d** Web \$70
O.g., small offset on back, fine. Scott \$500 Est. \$100/120

Only 1 Sheet of 50 Known



1343 ★★ **Canal Zone: 1962, 4c Thatcher Ferry Bridge, Silver (Bridge) Omitted, #157a** \$4,000
N.h., rare and fresh, very fine. Scott \$8,000 Est. \$5,000/6,000



1344 ○ **Hawaii: 1894, 25c Violet Brown, #R10** \$130
Blue cancel, "small pinhole", fresh, very fine appearance, 2015 PSE cert. Scott \$1,000 Est. \$200/250

1345 ☒ **Philippines: 1899, 1c on Red-Band Chinese Envelope, #213** Web \$70
Fine, tied by grid cancel with Cavite JUN 16 1902 cds, used internally with additional Olongapo cds on reverse with Manila transit, opened up at right, unusual, *Ex Robson Lowe 1968 auction* Est. \$100/150

1346 ★★□ **Philippines: Special Delivery; 1931, 20c, Plate Block of 8, #E6** Web \$100
N.h., bottom pl. #22620, large overall margins with minor gum skips, otherwise very fine. Scott \$490 Est. \$150/200

1347 ★★ **Ryukyus: 1952, 10y on 50s Specialized Study, #16-16B** Web \$1,700
N.h., presented in stockbook, consists of 49 n.h. items from singles to blocks of 8 with various types, also pairs and strips, incl. write-ups, photos, position and variety identifications, some non Scott listed items, great collection for the specialist, Fine to Very Fine. 2009 Scott \$9,500+ Est. \$2,000/2,500



1348 ★★ **Ryukyus: 1961, 3c Merger of Towns (White Silver Temple), Imperf Between, Horizontal Pair, #90a** \$450
N.h., marginal copy. Scott \$1,000 Est. \$500/600



1349 ★ **Ryukyus: Amami District, 1947, 1s, #2X3** \$350
L.h., fresh, fine. Scott \$1,750 Est. \$400/500

End of Second Session