



**HARMER-SCHAU**  
AUCTION GALLERIES, INC.



THE BRITISH COMMONWEALTH COLLECTION  
*of*

DAVID B. MARKOWITZ

AUGUST 21, 2014 • APS STAMP SHOW  
HARTFORD, CONNECTICUT

Lot Description Start Bid Lot Description Start Bid

Thursday, August 21, 2014

5:00 p.m., Lots 1-532

Great Britain



1 (★) **1840, 1d Black, Plate 2, SG #2** Photo \$1,500  
 Unused, excellent margins all round, lovely fresh copy with a nice impression, choice extremely fine, APS (2011) cert. Scott #1 \$11,000. SG £12,000 ..... Est. \$2,500/3,000



3 ★ **1860, 1 1/2d Rosy Mauve on Bluish, Unissued, SG #53a** Photo \$1,800  
 Full o.g., usual centering, fresh copy, fine and attractive, Sismondo (2013) cert. Scott #31 \$8,750. SG £8,500 ..... Est. \$2,500/3,000



4 ★ **1848, Victoria (Embossed), 10d Brown, SG #57** Photo \$1,800  
 Full o.g. (h.r.), Die 1, close at top to good margins other sides, excellent impression, very clean stamp, fine and scarce, BPA (2012) cert. Scott #6 \$11,000. SG £11,500 ..... Est. \$2,500/3,000

Rarely Seen With Original Gum



2 ★ **1840, 2d Blue, SG #5** Photo \$5,000  
 Part o.g., close to large margins at right (showing small portion of additional copy), excellent color and clean gum, fine and rare, RPS (1983), Sismondo (2012) certs. Scott #2 \$35,000. S.G. Spec. #DS8. SG £35,000 ..... Est. \$7,500/9,000



5 ★ **1854, Victoria (Embossed), 6d Dull Lilac, SG #59** Photo \$3,500  
 Full o.g., sharp impression, marginal copy with clear framelines on 3 sides, just touching at bottom left, inking is somewhat uneven, no points of abrasion, fine to very fine very scarce with full gum, RPS (1981) clean, Sismondo (2012) certs. Scott #7a \$18,000. SG £18,000 ..... Est. \$5,000/7,000



6 ★ **1862, Victoria, 3d Pale Carmine Rose, SG #77** Photo \$450  
 Emblems watermark, part o.g., fresh, centered, overall very fine, Brandon (2001) cert. Scott #37 \$2,500. SG £2,400 ..... Est. \$600/800

7 ★ **1873, Victoria, 6d Gray, SG #125** Photo \$375  
 Spray of Rose watermark, full o.g. (h.r.), excellent color, fine. Scott #60 \$1,900. SG £1,850 ..... Est. \$500/700

Lot Description Start Bid Lot Description Start Bid

**Brilliant Color**



8 ★ **1882, Victoria, £5 Orange, SG #137** *Photo* \$4,500  
 L.h. (small h.r.), nice color, fine to very fine. Scott #93 \$14,000. SG £14,000 ..... Est. \$6,000/8,000



9 (★) **1880, Victoria, 1/- Orange Brown, SG #151** *Photo* \$400  
 Spray of Rose watermark, regummed, very fresh copy, decent centering, fine, *ex Lutwak* PF (1976) cert. Scott #65 \$4,750. SG £4,750 ..... Est. \$600/800



10 ★ **1876, Victoria, 4d Vermilion, SG #152** *Photo* \$475  
 Large Garter watermark, full o.g. (h.r.), excellent color, fine for this. Scott #69 \$2,750. SG £2,800 ..... Est. \$700/900



11 ★ **1891, Victoria, £1 Green, SG #212** *Photo* \$700  
 Three Crowns watermark, full o.g., fine and attractive. Scott #124 \$4,000. SG £4,000 ..... Est. \$1,000/1,300



12 ★ **1913, GV "Seahorse", Waterlowlow £1, SG #403** *Photo* \$700  
 Very l.h., deep shade, fine to very fine. Scott #176 \$3,250. SG £3,000 ..... Est. \$1,000/1,300



13 ★★ **1929, £1 P.U.C., SG #438** *Photo* \$425  
 N.h., toned gum, well centered, very fine, signed Bolaffi. Scott #209 \$1,500. SG £750 (hinged) ..... Est. \$600/800



14 ★ **Inland Revenue: 1890, Victoria, 10/-, SG #O10** *Photo* \$2,400  
 L.h., faint natural gum bends, sharp impression, very fine and rare, *ex Silkin* Royal (1969) cert. Scott #O9 \$11,500. SG £11,000 ..... Est. \$3,000/3,500



15 ★ **Army: 1903, Edward VII, 6d, Widely Spaced Overprint, SG #O52** *Photo* \$700  
 Large part o.g., well centered, very fine and scarce, Royal (1982) cert. Scott #O62 \$3,250. SG £3,000 ..... Est. \$1,000/1,300

Lot Description Start Bid Lot Description Start Bid



16 ★ **Govt. Parcels: 1883, Victoria, 1/-, Plate 13, SG #O64** Photo \$375  
 Full o.g., fresh, fine and scarce, BPA (1979) cert. Scott #O30 \$1,675. SG £1,600 ..... Est. \$500/700



20 ★ **Admiralty: 1904, Edward VII, 2½d, SG #O111** Photo \$550  
 O.g. (h.r.), well centered, nice color, well centered, very fine and rare, Brandon (1994) cert. Scott #O82 \$2,850. SG £2,750 ..... Est. \$700/900



17 ★ **Govt. Parcels: 1900, Victoria, 1/-, SG #O72** Photo \$150  
 Very l.h., incredible color, fine to very fine and attractive, BPA (2010) cert. Scott #O38 \$625. SG £600 ..... Est. \$200/250



21 ★ **Extensive Balance of Collection to 1940** Photo \$3,750  
 Few earlies o.g. to unused or regummed, incl. SG#72 (o.g.) cert., #66, 66a, 1867-80 Spray of Rose watermark to 2/-, #153, 156, 1880-81 issue on mostly complete o.g. except £ values, 1883-84 issue unusually clean impressions and colors, 1902-11 issue complete after that except £1 Seahorse and £1 PUC (separate lots), Dues complete, Officials balance separate lot in future auction, very fresh copies in classic period ..... Est. \$5,000/7,500



18 ★ **Govt. Parcels: 1902, Edward VII, 1/-, SG #O78** Photo \$375  
 Full o.g. (h.r.), great color, fine to very fine, Brandon (2010) cert. Scott #O43 \$1,350. SG £1,300 ..... Est. \$500/600



19 ★ **Admiralty: 1904, Edward VII, 1½d, SG #O109** Photo \$300  
 Very l.h., rich color, fine or better, *ex Pattiz, Asch RPS* (1973) cert. Scott #O80 \$1,150. SG £1,100 ..... Est. \$400/500



22 ★ **Aden 1937 to 1949 Mint, SG #1-27** Photo \$300  
 O.g., 1st two sets complete, figured as cheapest shades, fine to very fine. Scott #1-27 \$872. SG £1,102 ..... Est. \$350/450

Lot Description Start Bid Lot Description Start Bid



- 23 ★ **Antigua Complete to 1948 GVI** *Photo* **\$1,100**  
Per Scott, earlies o.g. or unused, later l.h. to o.g. Scott #1-95, MR1-3 \$7,000. SG £6,500 ..... Est. \$1,500/2,000
- 24 ★ **Antigua - Barbuda: 1922, "Barbuda" Set, SG #1/11** **\$40**  
O.g. (few hinge remnants), fine to very fine. Scott #1-11 \$194. SG £150 ..... Est. \$60/80



- 25 ★ **Ascension: 1924, Badge of the Colony, 2/-, Broken Main Mast, SG #19a** *Photo* **\$150**  
O.g. (h.r.), fine to very fine. Scott #20 var. SG £650 ..... Est. \$200/250
- 26 ★ **Ascension Complete to 1949 GVI, SG #1/47** *Web* **\$270**  
L.h. to o.g., incl. GVI perf varieties, fine to very fine. Scott #1/49 \$1,450. SG £1,230 ..... Est. \$350/400

Australian States

*New South Wales*



- 27 (★) **1850, Sydney View, 1d Dull Carmine, Plate I Re-Engraved, Bluish Paper, Hill Unshaded, SG #11b** *Photo* **\$2,500**  
Unused, Plate 1 re-engraved, pos. 8 (R2/3), full margins all round, rich color, fine impression, sound, fine unused examples are rare, BPA (1995) cert. Scott #2j \$10,000 (no gum). SG £10,000 ..... Est. \$3,000/3,500



- 28 ★ **1855 Victoria, 5d Dull Green, SG #88** *Photo* **\$300**  
Watermarked "5", unused corner margin copy, excellent margins all round, deep rich color, very fine to extremely fine, BPA (2010) cert. Scott #26 \$1,600. SG £1,200 ..... Est. \$400/500



- 29 ★ **1856, Registration (6d) Orange & Indigo, Imperf, SG #105** *Photo* **\$250**  
Large part o.g. (h.r.), nice margins to close at top, attractive colors, fine and scarce. Scott #F1 \$1,400. SG £1,400 ..... Est. \$350/400



- 30 ★ **1885, Victoria, £1 Perf 12 x 10, Overprinted "Postage" in Blue, SG #242** *Photo* **\$1,400**  
Full o.g., centered bottom, very fresh, fine to very fine and rare, signed A. Diena, BPA (1975) cert. (old number). Scott #75A \$6,750. SG £7,500, 100 issued ..... Est. \$2,000/2,500



- 31 ★ **Official: 1890, 5/- Deep Purple, SG #O47** *Photo* **\$280**  
Watermarked "5/-", o.g. (h.r.), fine and scarce, Sismondo (2014) cert. Scott #O30 \$1,500. SG £1,500 .. Est. \$400/500

Lot Description Start Bid Lot Description Start Bid



32 ★ **Balance of Collection to 1906** Photo \$1,700  
 Early issues sparse, starting SG#24-25, incl. 1860-63 issue to 1/-, SG#174a, 1880s on mostly complete with #238b, 277 (cert.), incl. Semis, Dues complete except 10/-, some Officials incl. SG#O5a pair n.h. with sideways "O" variety, #O9a, O18ac, O47, fabulous colors, fine to very fine lot  
 ..... Est. \$2,500/3,000



35 (★) **South Australia: 1857, Victoria (Local Print), 6d Slate Blue Imperf, SG #10** Photo \$500  
 Unused, Large Star watermark, balanced margins all round, fresh, very fine and choice. Scott #8 \$3,750. SG £3,750  
 ..... Est. \$750/1,000



36 ★ **South Australia: Official; 1891 2/6 Violet, SG #086** Photo \$1,400  
 O.g. (small h.r. with slight toning not mentioned in cert.), very fresh copy, fine to very fine for the issue rare, Friedl (1974) cert. Scott #083 \$6,000. SG £6,000, one sheet of 60 stamps were printed ..... Est. \$2,000/2,500



33 ★ **Queensland Intact Collection to 1909** Photo \$2,400  
 Few earlies regummed, no gum or o.g., starting SG#6-8, 1862-67 perf 12½ to 13 issue complete per Scott (SG#21 cert.), 1882 on virtually complete per Scott, Semis complete, etc., very nice colors for this difficult State, fine to very fine overall ..... Est. \$3,000/4,000



34 (★) **South Australia: 1855, Victoria (London Print), 6d Deep Blue, Imperf, SG #3** Photo \$550  
 Unused, Large Star watermark, close to huge margins at bottom (showing portion of additional copy), deep color, sound, fine to very fine and attractive, BPA (1990) cert. Scott #3 \$2,800. SG £3,500 ..... Est. \$750/1,000



37 ★ **South Australia Balance of Collection to 1912** Photo \$1,400  
 Earlies no gum to o.g. and sparse to 1886-96 Victoria issue, starting SG#2 (large margins all round), #s 44, 56, 61, 157, 199 (certs), 45 used, 1891 on complete per Scott, scattered Officials incl. few Department overprints with certs., also incl. #O12b in pair, fresh throughout), fine to very fine lot  
 ..... Est. \$2,000/2,500

Lot Description Start Bid Lot Description Start Bid



38 (★) Tasmania: 1855, "Van Dieman's Land", 2d Imperf, SG #16 Photo \$500  
Unused, Large Star watermark, close to nice margins all round, small tone spot on reverse only, rich color, fine to very fine and scarce. Scott #5 \$4,000. SG £4,500  
..... Est. \$800/1,000



41 (★) Victoria: 1855, Victoria ("Too Late"), 6d Lilac & Green, SG #33 Photo \$350  
Unused, good to large margins all round, fresh, very fine and attractive, Sismondo (2014) cert. Scott #11 \$1,900. SG £2,250 ..... Est. \$500/700



39 ★ Tasmania: 1855, "Van Dieman's Land", 4d Deep Blue, Imperf, SG #17 Photo \$550  
Large Star watermark, large part o.g. (h.r.), clear to nice margins all round, nice fresh color, fine to very fine and attractive, APS (1997) cert. Scott #6 \$3,250. SG £3,750  
..... Est. \$800/1,000



42 ★ Victoria: 1885 Stamp Duty 1/-, SG #306b Photo \$400  
Canc'd. "138", centered right, fresh, fine for this scarce, BPA (1964) cert. for old SG#235. Scott #156A \$3,500. SG £1,600 ..... Est. \$600/800



40 ★ Tasmania Balance of Collection to 1912 Photo \$1,400  
1st few issues sparse, early mostly no gum, incl. SG#47, 51 (certs), 1864-69 issue complete with the various perfs, 1871-76 issue on mostly complete, also few shades, fresh throughout, fine to very fine overall ..... Est. \$2,000/2,500



43 ★ Victoria Balance of Collection to 1912 Photo \$1,300  
Scattered earlyies to 1883 unused to o.g., incl. SG#25, 28 (cert.-formerly #22), 129a (cert.), 1884-86 issue on virtually complete per Scott, incl #408 (o.g., toning, thins), Semis and Dues complete ..... Est. \$1,800/2,200

Lot Description Start Bid Lot Description Start Bid



44 (★) **Western Australia: 1854, Swan (Litho), 1/- Deep Red Brown, Imperf, SG #4a** Photo \$350  
 Unused, Swan watermark, close to clear margins all round, excellent color, fine, RPS of Victoria (1984) cert. Scott #5b \$2,250 (no gum). SG £1,800 ..... Est. \$500/700



45 ★ **Western Australia: 1858, Swan (Litho), 2d Brown Black on Red, Imperf, SG #15** Photo \$800  
 Swan watermark, dist. o.g., irregular but clear (showing portion of other stamp at right) to touching at bottom, very fresh for this, overall very fine, BPA (1995) cert. Scott #2 \$4,000 (no gum). SG £5,000 ..... Est. \$1,200/1,500



46 ★ **Western Australia Balance of Collection to 1912** Photo \$900  
 Spotty on earlies no gum to o.g., incl. SG#5a, 43 (cert.), also #1, 1884 on complete per Scott, excellent colors throughout, fine to very fine and attractive ..... Est. \$1,300/1,600

*Australia*



47 ★ **1913, Kangaroo & Map, £1 Brown & Ultramarine, SG #15** Photo \$900  
 1st watermark, full o.g., very fresh, fine to very fine. Scott #14 \$4,000. SG £2,500 ..... Est. \$1,200/1,500



48 ★ **1913, Kangaroo & Map, £2 Gray & Rose, SG #16 var.** Photo \$1,400  
 1st watermark, "broken coast in Bight" variety, slightly toned o.g., very well centered, overall very fine, APS (2006) clean cert. Scott #15a \$5,750. ACSC #57(D)e. SG £5,500 ..... Est. \$2,000/2,500



49 ★★ **1917, Kangaroo & Map, £1 Chestnut & Bright Blue, SG #44a** Photo \$1,400  
 3rd watermark, n.h., lovely color, fine or better, *ex Fordwater* Scott #56 \$9,250. ACSC #52B \$7,000. SG £3,000 (hinged) ..... Est. \$2,000/2,500



50 ★ **1919, Kangaroo & Map, £2 Black & Rose, SG #45a var.** Photo \$1,700  
 3rd watermark, l.h., "broken tail variety", shifted vignette, deep color, centered, very fine and attractive, Sismondo (2009) cert. Scott #58 \$7,000. ACSC #56B.Vd \$4,500. SG £4,250 ..... Est. \$2,500/3,000



51 ★★ **1924, Kangaroo & Map, £2 Purple Black & Pale Rose, SG #45b** Photo \$2,400  
 3rd watermark, n.h., attractive color, fine to very fine, *ex Fordwater*. Scott #59 \$12,500. ACSC #56C \$7,500. SG £4,000 (hinged) ..... Est. \$3,000/3,500



<i>Lot</i>	<i>Description</i>	<i>Start Bid</i>	<i>Lot</i>	<i>Description</i>	<i>Start Bid</i>
------------	--------------------	------------------	------------	--------------------	------------------



52 ★★ **1930, Kangaroo & Map, £2 Black & Rose, SG #114** *Photo* **\$1,400**  
 Small Multiple watermark, n.h., fresh, fine or better, *ex Fordwater* . Scott #102 \$11,500. ACSC #57 \$7,500. SG £4,250 (hinged) ..... Est. \$2,000/2,500



53 ★★ **1934, Kangaroo & Map, £2 Black & Rose, SG #138** *Photo* **\$2,000**  
 C of A watermark, n.h., nice color, fine to very fine and attractive. Scott #129 \$9,250. ACSC #58 \$6,000. SG £4,000 (hinged) ..... Est. \$2,000/2,500



54 ★ **Postage Due: 1903, 10/-, Perf 11, SG #D43** *Photo* **\$550**  
 Watermark Large Crown & NSW, o.g. (h.r.), nice color for the issue, centered, choice very fine. Scott #J21 \$4,000. SG £1,900 ..... Est. \$800/1,000



55 ★ **Postage Due: 1903, 20/-, Perf 11, SG #D44** *Photo* **\$1,100**  
 Watermark Large Crown & NSW, full o.g., well centered, very fine and attractive, *ex Fordwater* signed Thier. Scott #J22 \$8,500. SG £4,250 ..... Est. \$1,500/2,000



56 ★ **Postage Due: 1909, 2/-, SG #D60** *Photo* **\$250**  
 Perf 11½x11, full o.g., fresh, fine, signed Rulevant, APS (1987) cert. Scott #J35 \$1,800. SG £1,000 .... Est. \$350/450



57 ★ **Postage Due: 1909, 10/-, SG #D61** *Photo* **\$700**  
 Perf 11½x11, slightly toned o.g. (h.r.), unusually well centered, very fine, *ex Gross* . Scott #J37 \$5,200. SG £2,500 ..... Est. \$1,000/1,200



58 ★ **Postage Due: 1909, 20/-, SG #D62** *Photo* **\$2,400**  
 Perf 11½x11, l.h., very fresh, choice very fine very rare in this condition, *ex Fordwater* . Scott #J38 \$13,000. SG £6,500 ..... Est. \$3,000/4,000



59 ★ **Extensive Balance of Collection to 1942 GVI** *Photo* **\$4,500**  
 L.h. to o.g. (occasional n.h.), complete per Scott except £ rarities, incl. SG#137 (cert.), Dues complete except rarities, Officials complete (non-perf initialed), incredible freshness through the whole collection, great lot to expand ..... Est. \$6,000/8,000

<i>Lot</i>	<i>Description</i>	<i>Start Bid</i>	<i>Lot</i>	<i>Description</i>	<i>Start Bid</i>
------------	--------------------	------------------	------------	--------------------	------------------

## New Guinea

### New Britain



- 60 ★ **1914, G.R.I. 8d on German New Guinea 80pf, SG #11** *Photo* **\$275**  
 "G.R.I." and value 6mm apart, large part o.g., well centered, very fine overall, BPA (1965) cert. Scott #11 \$1,000. SG £950 ..... Est. \$350/400



- 61 ★ **1914, G.R.I. 2/- on German New Guinea 2m, SG #13** *Photo* **\$550**  
 "G.R.I." and value 4mm apart, 4th setting, o.g., fine, Sismondo (2014) cert. Scott #13 \$3,000. SG £3,000 ..... Est. \$800/1,000



- 62 ★ **1914, G.R.I. 2/- on German New Guinea 2m, SG #28** *Photo* **\$700**  
 "G.R.I." and value 5½mm apart, o.g., few slightly soaked perfs, BPA (1936) cert.! Scott #28 \$5,000. SG £5,000 ..... Est. \$1,000/1,300



- 63 ★ **1914, G.R.I. 1/- on Marshall Islands 1m, SG #59** *Photo* **\$700**  
 Full o.g., 3rd setting, pos. 3, excellent color, fine and scarce, Sismondo (2012) cert. Scott #39 \$3,750. SG £3,750 ..... Est. \$1,000/1,300



- 64 ★ **1914, G.R.I. 2/- on Marshall Islands 2m, SG #60** *Photo* **\$400**  
 O.g., guarantee mark on reverse, fresh, fine and attractive, Sismondo (2014) cert. Scott #40 \$1,800. SG £1,800 ..... Est. \$500/700



- 65 ★ **1914-15 Balance of Collection** *Photo* **\$1,400**  
 1914 1st setting complete to 5d on 50pf, 2nd setting to 8d on 80pf, 1914 Marshall Islands overprints to 8d on 80pf, etc., Officials complete incl. occasional cert., fresh collection, fine to very fine lot. Scott \$7,400 ..... Est. \$1,800/2,200



- 66 ★ **North West Pacific Islands: 1915-16 Watermark Wide C & A 5/-, SG #83** *Photo* **\$500**  
 O.g. (slightly dist. in hinged area), very well centered, fresh, very fine or better, Sismondo (2013) cert. Scott #8 \$2,200. SG £2,500 ..... Est. \$800/1,000



- 67 ★ **North West Pacific Islands Virtually Complete** *Photo* **\$550**  
 L.h. to o.g., complete except four rarer pieces, incl. cert for SG#85, fresh and fine to very fine. Scott \$2,910 ..... Est. \$700/900

Lot Description Start Bid Lot Description Start Bid



68 ★ **New Guinea Complete Collection** *Photo* \$900  
 Per Scott, l.h. to o.g., fresh throughout, very fine overall.  
 Scott #1-51, C1-59, O1-35 \$4,677 ..... Est. \$1,200/1,600



69 ★ **Papua New Guinea Complete** *Photo* \$700  
 Per Scott, l.h. to o.g., incl. Officials. Scott #1-121, C1-15,  
 O1-12 \$3,460 ..... Est. \$1,000/1,300

*Bahamas*



70 ★ **1861, Victoria, 1d Lake, Rough Perf 14 to 16, SG #4** *Photo* \$150  
 Full o.g., very fresh, usual centering, fine and attractive,  
 Brandon (1996) cert. Scott #2 \$925. SG £650  
 ..... Est. \$250/300



71 ★ **1861, Victoria, 4d Dull Rose, Rough Perf 14 to 16, Pair, SG #5** *Photo* \$550  
 O.g. marginal, decent centering, lovely color for this,  
 immaculate and very fine, BPA (1980) cert. Scott #3  
 \$3,600+. SG £2,800+ ..... Est. \$800/1,000



72 (★) **1861, Victoria, 6d Gray Lilac, Rough Perf 14 to 16, SG #6** *Photo* \$750  
 Unused, good centering for this, almost complete perfs on all  
 sides, very fresh for this usually faded stamp, very fine and  
 scarce, Sismondo (2013) cert. Scott #4 \$5,500. SG £4,250  
 ..... Est. \$1,000/1,400



73 (★) **1862, Victoria, 4d Dull Rose, Perf 13, SG #18** *Photo* \$500  
 Unused, showing portion of papermaker's sheet watermark,  
 excellent color, sound, fine and scarce, Brandon (2008) cert.  
 Scott #9 \$3,500. SG £2,750 ..... Est. \$750/1,000



74 ★ **1862, Victoria, 6d Lilac, Perf 13, SG #19a** *Photo* \$550  
 "part original gum....some gum added" (some light gum  
 toning), sound, good centering, some uncleared perf discs,  
 fine and attractive, Sismondo (2012) cert. Scott #10a  
 \$3,500. SG £2,750 ..... Est. \$800/1,000



75 ★ **1865, Victoria, 1/- Green, Perf 12½, SG #38** *Photo* \$550  
 Full o.g. (tiny h.r.), centered, fresh, immaculate and very  
 fine. Scott #15 \$3,250. SG £2,750 ..... Est. \$800/1,000

<i>Lot</i>	<i>Description</i>	<i>Start Bid</i>	<i>Lot</i>	<i>Description</i>	<i>Start Bid</i>
------------	--------------------	------------------	------------	--------------------	------------------



- 76 ★ **1882, Victoria, 4d Rose, Perf 14, Reversed Watermark, SG #43x** *Photo* \$250  
Full o.g. (h.r.), well centered, choice very fine. Scott #21 var. \$1,500+. SG £950 ..... Est. \$350/450



- 77 ★ **Balance of Collection to 1946 GVI** *Photo* \$900  
Scattered 1st few issues (some individual lots), couple possible ms. cancels, 1863-77 Crown CC watermark issue on virtually complete per Scott and incl. certs for SG #34 (color changed), 42x (split watermark), 41, 45, fresh and sound throughout, fine to very fine overall ..... Est. \$1,300/1,600



- 78 ★ **Bahrain 1933-1937 Complete, SG #1-19a** *Photo* \$200  
1st set very l.h., others o.g., fine to very fine. Scott #1-19a \$597. SG £435 ..... Est. \$250/300



- 79 ★ **Bahrain: 1938-41 GVI Set, SG #20-37** *Photo* \$250  
L.h. to o.g. (few small h.r.), fine to very fine. Scott #20-37 \$742. SG £950 ..... Est. \$300/350

## Barbados



- 80 ★ **1861, "Britannia", Unissued (1d) Blue, Perf 11-12, SG #37** *Photo* \$400  
Full o.g. (small h.r.), fresh, usual centering, fine, RPS (1948) cert. Scott #23 \$2,500. SG £2,000 ..... Est. \$600/800



- 81 (★) **1870, "Britannia" (1d) Blue, Rough Perf 14 to 16, SG #44** *Photo* \$450  
Unused, showing perfs on all 4 sides, usual centering, fine and scarce, Rendon (1996) cert. Scott #25 \$2,500. SG £2,500 ..... Est. \$600/800



- 82 ★ **1873, "Britannia", 5/- Dull Rose, SG #64** *Photo* \$230  
Full o.g. (h.r.), usual color, fine for the issue. Scott #43 \$1,200. SG £950 ..... Est. \$300/400



- 83 (★) **1878, "Britannia", 1d on Half of 5/- Dull Mauve, Curved Serif on "1", SG #86** *Photo* \$900  
Regummed, "short crease at left", fresh for this, fine overall, signed Bloch, Brandon (clear cert. part o.g. 2006), BPA (2009) certs. Scott #57 \$7,500. SG £5,000 ..... Est. \$1,400/1,800

Lot Description Start Bid Lot Description Start Bid



84 ★ **Balance of Collection to 1947** Photo **\$1,800**  
 Missing only a few per Scott listing to be complete, earliest unused, regummed or o.g., later o.g. incl. SG#28, 31, 46, 52, 57, 61 (certs), 18 (full o.g.), 50, 60, imperfs 4 margin copies, sound throughout with excellent colors, 1882-85 Victoria on complete per Scott, also 1897 Jubilee bluish papers virtually complete, Dues, much fine to very fine ..... Est. \$2,500/3,000

85 ★ **Basutoland Complete to 1938, SG #1-28, D1-2** \$100  
 O.g., incl. Due set, no Official set, fine to very fine. Scott #1-28, J1-2 \$400. SG £395 ..... Est. \$130/160

*Bechuanaland*



86 (★) **1888, Victoria, £5 Lilac & Black, SG #21** Photo **\$700**  
 Unused, centered, fresh, fine to very fine, copy RPS (1985) cert. Scott #22 \$3,750. SG £4,000 ..... Est. \$1,000/1,400



87 ○ **1888, Victoria, 2d on 2d, Surcharge in Green, SG #23c** Photo **\$1,100**  
 Light barred oval cancel, well centered, fine to very fine, Brandon (1996) cert. Scott #27 \$2,750. SG £4,000 *one of the key stamps for the country, very rare* ..... Est. \$1,500/2,000



88 ★ **1888, "Bechuanaland Protectorate" on G.B. 5/-, SG #49** Photo **\$350**  
 O.g., excellent impression, nearly very fine, RPS (1987) cert. Scott #57 \$1,400. SG £1,300 ..... Est. \$500/700



89 ★ **1888, "Bechuanaland Protectorate" on G.B. 10/-, SG #50** Photo **\$1,500**  
 Full o.g., fresh, fine to very fine, Holcombe (1994) cert. Scott #58 \$5,250. SG £4,750 ..... Est. \$2,000/2,500



90 ★ **Balance of Collection to 1938** Photo **\$1,300**  
 L.h. to o.g., starting with British Bechuanaland 1885-87 set complete and complete after that except SG#21, 49-50 (separate lots), and Protectorate complete incl. Fiscals and Dues, excellent collection, fine to very fine lot ..... Est. \$1,700/2,200



91 ★ **Bermuda: 1874, Victoria, 3d on 1/- Green, SG #13** Photo **\$450**  
 O.g., toned mostly hinge marks (not mentioned in cert.), deep color, fine overall, APS (1992) cert. Scott #12 \$2,850. SG £2,500 ..... Est. \$600/800

Lot Description Start Bid Lot Description Start Bid



92 ★ **Bermuda: Postal-Fiscal; 1937, 12/6, SG #F1** *Photo* \$375  
 O.g., fine to very fine, Sismondo (2013) cert. Scott #AR1 \$1,250. SG £1,100 ..... Est. \$500/600



95 ★ **British Guiana: 1888-89 "Inland Revenue" Set, SG #175/89** *Photo* \$450  
 L.h. to o.g., typical gum toning on some, \$1 overall aging, incl. larger figure "4" and "6" variety (\$4 separate lot), also SG#192, fine to very fine. Scott #112//128 \$2,214. SG £1,934 ..... Est. \$600/800



96 ★ **British Guiana: 1888, "Inland Revenue", \$4, Large "4", SG #188a** *Photo* \$550  
 L.h., well centered, very fresh, very fine. Scott #127A \$2,200. SG £2,000 ..... Est. \$700/900



93 ★ **Bermuda Balance of Collection to 1949 GVI** *Photo* \$1,400  
 Complete per Scott except #11, 12, and AR1 (separate lots) incl. SG#14-15 (certs), mostly o.g. on earlies, incl. few key plate shades, great colors, fine to very fine overall ..... Est. \$2,000/2,500



97 ★ **British Guiana Balance of Collection** *Photo* \$1,500  
 Early period to 1862 sparse, but incl. SG#33, 41, 63, 1876 issue complete, 1881 issue on virtually complete, incl. Dues, few Officials, above average freshness and condition, excellent collection for expansion, fine to very fine lot ..... Est. \$2,000/2,500



94 ★ **British Guiana: 1881, Provisional Surcharge, 2c on 24c, SG #158** *Photo* \$230  
 Large part o.g., very fresh, fine to very fine overall. Scott #100 \$850. SG £850 ..... Est. \$300/400



98 ★ **British Honduras Intact to 1947 GVI** *Photo* \$1,100  
 Virtually all o.g. and virtually complete per Scott incl. SG#10a, 30 (certs), 20th Century complete, Dues complete, excellent color, fine to very fine lot ..... Est. \$1,500/2,000

*Lot*                      *Description*    *Start Bid*                      *Lot*                      *Description*    *Start Bid*



99 ★ **British Levant: 1906 Edward VII 1pi on 2d, SG #15** *Photo* **\$375**  
 L.h., centered for the issue and fresh, fine to very fine, signed Richter, Sismondo (2010) cert. Scott #25 \$1,500. SG £1,400 ..... Est. \$500/700

100 ★ **British Levant Virtually Complete, SG #1-14, 16-40, L1-10, 18-24** *Web* **\$375**  
 L.h. to o.g., complete except SG#15, fresh throughout. Scott #1-24, 26-64 \$1,650. SG £1,220 ..... Est. \$500/700



101 ★ **British Solomon Complete to 1951 GVI, SG #1-72, D1-8** *Photo* **\$375**  
 L.h. to o.g., fresh throughout, Dues complete, fine to very fine. Scott #1-79, J1-9 \$1,550. SG £1,311 ..... Est. \$500/700

102 ★ **British Virgin Islands Complete to 1947 GVI** *Photo* **\$500**  
 Per Scott, l.h. to o.g., 1880 2½d small scuff, fresh throughout, very fine. Scott #1-87 \$2,600 ..... Est. \$700/900



103 ★ **Brunei: 1906 Surcharge Set, SG #11-22** *Photo* **\$200**  
 O.g. to small part o.g., fine to very fine. Scott #1-12 \$699. SG £600 ..... Est. \$200/250

104 ★ **Brunei: 1907-10, 1908-22 Sets, SG #23-50** *Photo* **\$140**  
 O.g. (few with h.r.), fine to very fine. Scott #13-39 \$611. SG £482 ..... Est. \$180/220

105 ★ **Brunei: 1922 Exhibition to 1931 Set, SG #51-78** *Web* **\$120**  
 L.h. to o.g., incl. overprint varieties incl. SG#58c. Scott #14b/58 \$424+. SG £460+ ..... Est. \$160/200



106 ★ **Burma: 1937 Overprint Set, SG #1-18** *Photo* **\$200**  
 O.g., 25r regummed, fine to very fine. Scott #1-18 \$1,371. SG £2,250 (n.h.) ..... Est. \$300/400



107 ★ **Burma: Official; 1937 GV Set, SG #O1-O14** *Photo* **\$140**  
 O.g., fine to very fine. Scott #O1-14 \$450. SG £800 (n.h.) ..... Est. \$180/220

108 ★ **Burma Balance of Collection, SG #18b/34, O15-27** *Web* **\$140**  
 L.h. to o.g., fine to very fine lot. Scott #18A-34, O15-27 \$459. SG £429 (n.h.) ..... Est. \$180/220



109 ★ **Cameroon: 1915, "C.E.F." and ½d to 5/- on Cameroun Set, SG #B1/13** *Photo* **\$280**  
 O.g. to large part o.g., fine to very fine. Scott #53-65 \$992. SG £900 ..... Est. \$350/450

<i>Lot</i>	<i>Description</i>	<i>Start Bid</i>	<i>Lot</i>	<i>Description</i>	<i>Start Bid</i>
------------	--------------------	------------------	------------	--------------------	------------------

## Canadian Provinces

### *British Columbia & Vancouver Island*



- 110 (★) **1865, 10c Blue, Imperf, #4** *Photo* **\$500**  
 Unused, nice margins all round, "small marks on margin", fresh, very fine and attractive, BPA (1965) cert. SG #12. Unitrade C\$3,000 (VF). Scott \$4,500 ..... Est. \$800/1,000



- 111 ★ **1867, 10c on 3d Lilac Rose, Perf 14, #10** *Photo* **\$400**  
 Full o.g., ink notation on reverse (not mentioned in cert.), fresh and fine to very fine, BPA (2008) cert. SG #30. Unitrade C\$1,800 (Fine). Scott \$1,600 ..... Est. \$600/800



- 112 ★ **1867, \$1 on 3d Green, Perf 14, #13** *Photo* **\$400**  
 Full o.g., excellent rich color, some uncleared perfs, almost very fine, Greene (2013) cert. SG #33. Unitrade C\$1,500 (Fine). Scott \$1,500 ..... Est. \$600/800



- 113 ★ **1867, 5c on 3d Bright Red, Perf 12 1/2, #14** *Photo* **\$550**  
 Full o.g., deep color, fine to very fine, Greene (2013) cert. SG #23. Unitrade C\$2,000 (Fine). Scott \$2,000 ..... Est. \$750/900



- 114 ★ **1867, 50c on 3d Violet, Perf 12 1/2, #17** *Photo* **\$350**  
 Full o.g., few uncleared perfs, fresh and fine, *ex Wellburn*, Martin Greene (1999) cert. SG #26. Unitrade C\$1,200 (Fine). Scott \$1,500 ..... Est. \$500/600



- 115 ★ **1867, \$1 on 3d Green, Perf 12 1/2, #18** *Photo* **\$400**  
 L.h., few uncleared perf discs, very fresh, fine, Brandon (2008) cert. SG #27. Unitrade C\$1,800 (Fine). Scott \$2,000 ..... Est. \$600/800



- 116 ★ **Balance of Collection** *Photo* **\$900**  
 Starting #2 (o.g.?) and consisting of #5-6, 7, 1867-69 surcharges set complete except the single lots in the auction, incl. #12, 15-16 (certs-o.g.) ..... Est. \$1,200/1,500

### *New Brunswick*



- 117 ★ **1851, 3d Red, #1** *Photo* **\$1,000**  
 Part o.g., well clear to nice margins all round, bright color and clear impression, fine to very fine and scarce. SG #1. Unitrade C\$10,000 (VF). Scott \$5,000, *difficult stamp with gum and sound* ..... Est. \$1,400/1,700



- 118 ★ **1851, 6d Olive Yellow, #2** *Photo* **\$2,400**  
 Part o.g., clear margins at left to full margins on other sides, bright vivid color and sharp impression not usually seen for this denomination, difficult stamp to find sound with margins, Greene (1991) cert. SG #4. Unitrade C\$15,000 (VF). Scott \$7,000, *very rare with original gum* ..... Est. \$3,000/4,000



*Lot Description Start Bid Lot Description Start Bid*

**Rare Classic, Ex Carey Fox, Kanai, Sir Gawaine Baillie**



119 (★) **1851, 1/- Bright Red Violet, #3** *Photo* **\$8,500**  
 Unused, excellent and large margins all round, true rich color and a clean back, extremely fine and choice sought-after classic stamp, described in the Kanai Harmers of NY sale as “superb, an incredible copy and rightfully so, a stunning example”, *ex E. Carey Fox, Kanai, Baillie* PF (1968) cert. signed by John Boker. SG #5. Unitrade C\$30,000 (VF). Scott \$32,500 .....Est. \$12,000/15,000

*Newfoundland*

120 ★ **1860-63, Cents Issue Set, #6-11** *Web* **\$40**  
 O.g. to part o.g., 2c no gum, fresh, fine to very fine. SG #7/19. Unitrade C\$145 (Fine-cheapest shades). Scott \$250 ..... Est. \$60/80



122 (★) **1857, 2d Scarlet Vermilion, #2** *Photo* **\$2,000**  
 Unused, possible traces of gum? “light horizontal crease”, clear framelines to just touching, excellent color, nice example of this rare stamp, Royal (1959), Sismondo (2002) certs. SG #2. Unitrade C\$12,500 (Fine). Scott \$17,500 ..... Est. \$3,000/4,000



121 ☒ **1860, 10c Vermilion, Bisected on Cover, #9a** *Photo* **\$150**  
 “AU 1860” Petitcodiac to Moncton showing the 5c rate, a fine cover, BPA (1966) cert. SG #17a. Unitrade C\$1,000. Scott \$800 ..... Est. \$200/250



123 (★) **1857, 4d Scarlet Vermilion, #4** *Photo* **\$2,800**  
 Unused, attractive balanced 4 margins, incredible color, sound, immaculate and very fine most are without gum, *ex Dauer* RPS (1948) cert. SG #4. Unitrade C\$15,000 (VF). Scott \$11,500 ..... Est. \$3,500/4,000

Lot Description Start Bid Lot Description Start Bid



124 (★) **1857, 6½d Scarlet Vermilion, #7** *Photo* **\$700**  
 Unused, irregular margins from very large at left to touching at bottom right, sound, good color, fine or better, Sismondo (2002) cert. SG #7. Unitrade C\$3,000 (Fine). Scott \$5,000  
*most are without gum* ..... Est. \$1,000/1,300



127 ★ **1860, 6d Orange, #13** *Photo* **\$1,400**  
 O.g., large balanced margins, beautiful color, very fine and attractive, Greene (1987) cert. SG #14. Unitrade C\$5,000 (VF). Scott \$5,500 ..... Est. \$2,000/2,500

**Extremely Rare Sound Classic Stamp**



125 ★ **1857, 1/- Scarlet Vermilion, #9** *Photo* **\$5,500**  
 “traces of o.g.”, pencil notation on reverse, close but clear margins to touching frameline at bottom, “slightly soiled and oxidized” (oxidation has subsequently been removed)”, we also question the soiling, fine to very fine for this, PF (2007) cert. SG #9. Unitrade C\$30,000 (unused-VF). Scott \$45,000, *sound, fine unused copies of the 1/- scarlet vermilion are extremely scarce and not known to have large margins, many are cut into and/or have faults* ..... Est. \$8,000/10,000



128 ★ **1861, 1d Reddish Brown, #16** *Photo* **\$3,000**  
 O.g., clear to nice margins all round, sharp color, very fine for this difficult stamp, Friedl (1973), PF (1970) certs. SG #16a. Unitrade C\$15,000 (Fine). Scott \$14,000  
 ..... Est. \$4,000/5,000

**Approximately 87 Known Mint of This Rare Airmail**



126 (★) **1860, 4d Orange, #12** *Photo* **\$600**  
 Unused, mostly large margins to clear at bottom, fresh color on crisp white paper, almost very fine, *ex Dauer* RPS (1972) cert. for regummed (subsequently removed). SG #12. Unitrade C\$2,000 (Fine). Scott \$4,250 ..... Est. \$800/1,000



129 →★ **Airmail: 1919, 3c Hawker Flight, #C1** *Photo* **\$5,500**  
 O.g., sound, usual centering, fine and attractive 200 issued, 95 used and 18 destroyed by the postmaster, so about 87 mint examples should exist, *countersigned “J.A.R.” ms. initials at the offices of the “Daily News” on reverse of adhesive BPA* (2002 for pair), Sismondo (2013) certs. SG #142. Unitrade C\$20,000 (Fine). Scott \$27,500 ..... Est. \$8,000/10,000

*Lot Description Start Bid Lot Description Start Bid*



130 →★ **Airmail: 1930, 50c on 36c Columbia Flight, #C5** *Photo* **\$2,500**  
 L.h., fresh, fine, Friedl (1974) cert. SG #191. Unitrade C\$8,000. Scott \$9,500, 300 issued, 100 used  
 ..... Est. \$3,500/4,000



133 (★) **1851, 6d Yellow Green, #4** *Photo* **\$1,000**  
 Unused, good to large margins, good color, sound, very fine overall. SG #5. Unitrade C\$6,500 (VF). Scott \$5,000  
 ..... Est. \$1,500/2,000



131 ★ **Balance of Collection to 1939** *Photo* **\$1,800**  
 Strong in the classics with mostly o.g., great colors and most imperfs with margins all round, starting 1857, 1860, 1861-62 issues except high cat. values (most are separate lots), 1865-94 issue on complete except Airmail missing only rarities (no De Pinedo, others individual lots), Dues complete, excellent collection to develop, fine to very fine lot  
 ..... Est. \$2,500/3,000



134 (★) **1857, 6d Dark Green, #5** *Photo* **\$1,500**  
 Unused, just clear to good margins, deep rich color, tiny corner crease, fine and scarce. SG #6. Unitrade C\$5,000 (Fine). Scott \$10,000 ..... Est. \$2,000/2,500



135 (★) **1851, 1/- Deep Purple, #6b** *Photo* **\$3,000**  
 Unused, close margins all round, "2 small blue ink marks below "NO" of "NOVA", sound, fresh, fine difficult stamp to find sound, Brandon (2007) cert. SG #7c. Unitrade C\$17,500 (Fine). Scott \$25,000 ..... Est. \$4,000/5,000

136 ★ **Balance of Collection** *Web* **\$200**  
 Consisting of #2-3 no gum, 6-13 (10 o.g.), all fresh, fine to very fine overall ..... Est. \$300/400

*Nova Scotia*



132 ★ **1853, 1d Red Brown, #1** *Photo* **\$600**  
 Dist. o.g., clear to nice margins all round, very fresh, fine to very fine for the issue, RPS (1973) cert. SG #1. Unitrade C\$4,000 (VF). Scott \$3,500 ..... Est. \$800/1,000



137 ★ **Prince Edward Island Complete Mint** *Photo* **\$400**  
 O.g. except #1 (cert-regummed), 2-3 no gum or regummed, fresh throughout, sound, fine to very fine overall  
 ..... Est. \$600/800

Lot	Description	Start Bid	Lot	Description	Start Bid
-----	-------------	-----------	-----	-------------	-----------

## Canada

---



- 138 ★ **1852, 3d Red, #4** *Photo* **\$350**  
 Large part o.g. (light gum tone spot not mentioned in certs), minor re-entry pos. #53, pane B, close to large margins all round, nice color, Brandon (2006), APS (1989) certs. SG #5. Unitrade #4viii C\$3,000 (Fine). Scott \$1,500+ ..... Est. \$500/700



- 139 (★) **1852, 3d Orange Red, Thin Paper, #4d** *Photo* **\$450**  
 Unused, large (erratic) margins all round, showing "cracked beaver" (triple relief break) variety, excellent color, lovely very fine appearance, AIEP (2010), Sismondo (2004) certs. SG #8 var. Unitrade #4d C\$2,000 (VF). Scott \$1,450+ ..... Est. \$600/800



- 140 (★) **1855, 6d Slate Gray, #5** *Photo* **\$3,000**  
 Unused, nice margins to touching, completely sound, excellent color for this, fine and scarce, RPS (2010) cert. stating greenish gray. SG #9. Unitrade #5 C\$15,000 (Fine). Scott \$23,000 ..... Est. \$4,000/5,000



- 141 ★ **1855, 10d Blue, #7** *Photo* **\$2,500**  
 Large part o.g. (toned), nice margins all round, sound in every respect, fine to very fine rarely seen with gum. SG #15. Unitrade C\$24,000 (VF). Scott \$9,000 ... Est. \$3,500/4,500



- 142 ★ **1857, 1/2d Rose, #8** *Photo* **\$400**  
 Full o.g., large margins all round, excellent color, very fine to extremely fine, CPE (2008) cert. SG #17. Unitrade C\$2,800 (VF). Scott \$1,000 ..... Est. \$600/800



- 143 (★) **1857, 7 1/2d Green, #9** *Photo* **\$2,000**  
 Unused, excellent margins all round, wonderful bright color, strong impression, very fine or better, Friedl (1973) cert. SG #12. Unitrade C\$12,000 (VF). Scott \$7,000 ..... Est. \$3,000/3,500



- 144 (★) **1857, 6d Reddish Purple, Very Thick Soft Wove Paper, #10** *Photo* **\$2,800**  
 Unused, good margins all round, "tiny surface scrape", distinctive color and very fresh for this paper, fine for the issue missing mint from most collections, very rare mint, usually found altered or repaired, ex "Fordwater" Greene (2011) cert. SG #23. Unitrade C\$18,000 (Fine). Scott \$15,000 ..... Est. \$4,000/6,000



- 145 (★) **1858, 1/2d Rose, #11** *Photo* **\$700**  
 Unused, very fresh, sound, decent centering for the 1/2d, fine to very fine for the issue, signed Holcombe. SG #25. Unitrade C\$2,000 (Fine). Scott \$3,000 ... Est. \$1,000/1,300

Lot Description Start Bid Lot Description Start Bid



146 (★) **1859, 3d Red, #12** Photo **\$1,800**  
 Unused, usual centering, excellent color, sound in every respect, scarce mint, fine for the issue, Royal (1959), Sismondo (2010) certs. SG #26. Unitrade #12 C\$12,000 (Fine). Scott \$12,500 ..... Est. \$2,500/3,000

**Rare Sound Example**



147 ★ **1859, Perf 11¾, 6d Brown Violet, #13** Photo **\$4,000**  
 Unused example of this difficult issue, well centered with intact perfs, unusually wide margins for the issue, lovely color for this and sharp impression on clean white paper, very fine and rare one of the better unused examples that exist, *ex Fox BPA* (1963) cert. SG #27. Unitrade C\$30,000 (VF). Scott \$19,000 ..... Est. \$6,000/8,000



148 (★) **1859, 10c Black Brown, #16** Photo **\$2,300**  
 Unused, distinctive color, proof like impression on fresh white paper, centered to top, "tiny corner crease at bottom left", fine to very fine for the issue vary rarely seen mint, *ex Fordwater* PF (1908) cert. SG #33. Unitrade C\$9,000 (Fine). Scott \$12,000 ..... Est. \$3,000/4,000



149 (★) **1875, 5c Olive Green, Perf 11½, #26** Photo **\$350**  
 Regummed, centered, fresh, overall very fine, APS (2008) cert. SG #63. Scott \$1,600 ..... Est. \$500/700



150 ○ **1868, 1c Brown Red, Laid Paper, #31** Photo **\$1,400**  
 Centered right, unused appearance, strong laid lines, very fresh, sound, fine for the issue, PF (1971) cert. SG #55a. Scott \$8,000 ..... Est. \$2,000/2,500



151 ★★ **1877, 10c Dull Rose Lilac, #40** Photo **\$450**  
 N.h., winged margin copy, light gum crease, excellent color, fine. SG #87. Scott \$3,000 ..... Est. \$600/800



152 ★★ **1897, 10c Brown Red, #45** Photo **\$275**  
 N.h., short perf at top, very fresh copy, fine, *ex Fordwater* Greene (2013) cert. SG #111. Scott \$1,400 ... Est. \$400/500

1897 Jubilee Issue



153 P **Set in Plate Proofs on Card, #50P-65P** Photo **\$1,000**  
 Nice margins all round on all copies, fresh, a very fine set. SG #121P/140P. Unitrade C\$6,860 (VF) ... Est. \$1,500/2,000

*Lot*      *Description*      *Start Bid*      *Lot*      *Description*      *Start Bid*



154 ★★ **\$0.50 Ultramarine, #60**      *Photo*      **\$180**  
 N.h., nice color, fine to very fine. SG #134. Scott \$775  
 ..... Est. \$250/300



159 ★ **\$5 Olive Green, #65**      *Photo*      **\$350**  
 O.g., deep color, almost very fine. SG #140. Scott \$1,500  
 ..... Est. \$500/700



155 ★ **\$1 Lake, #61**      *Photo*      **\$300**  
 Very l.h., excellent color, very fine, BPA (1981) cert. SG  
 #136. Scott \$1,000 ..... Est. \$400/500



160 ★★ **1903, 20c Olive Green, #94**      *Photo*      **\$425**  
 N.h., "minor natural gum skip", well centered large copy,  
 deep shade, very fine to extremely fine, CPE (2008) cert. SG  
 #185. Scott \$1,750 ..... Est. \$600/800



156 ★ **\$2 Dark Purple, #62**      *Photo*      **\$300**  
 L.h., fresh and fine to very fine. SG #137. Scott \$1,400  
 ..... Est. \$400/500



161 ★★ **1927 Confederation Set, Imperf**  
**Vertically, Horizontal Pairs, #141b-145b**      *Photo*      **\$250**  
 N.h., fine to very fine. SG #266-270 vars. Scott \$900  
*estimated 250 pairs* ..... Est. \$350/400



157 ★★ **\$3 Yellow Bistre, #63**      *Photo*      **\$550**  
 N.h., gum wrinkle, fresh and fine, Greene (1987) cert. SG  
 #138. Scott \$4,000 ..... Est. \$800/1,000



162 ★★ **1928 GV "Scroll" Set, Imperf**  
**Vertical, Horizontal Pairs, #149d-159b**      *Photo*      **\$900**  
 N.h., fine to very fine. SG #275-285 vars. Scott \$3,970,  
*estimated 250 pairs* ..... Est. \$1,200/1,500



158 ★ **\$4 Purple, #64**      *Photo*      **\$275**  
 Very l.h., fine lot. SG #139. Scott \$1,400 ..... Est. \$400/500

Lot Description Start Bid Lot Description Start Bid



163 ★ **Extensive Balance of Collection** *Photo* **\$5,000**  
 To 1967 with scattered certs throughout, couple early used incl. #1-2, 33, some no gum or regummed mostly through large Queens, 1857 perf issue complete except 10c, large Queens to 15c, small Queens complete mint except #40 (separate lot), few extra shades, Victoria issue on complete mint with shades, scattered n.h. incl. 1908 Tercentenary 5c, 10c, Airs and rest of back of book complete mint incl. #C1a, C3c, 19th Century much above average condition and particularly the colors, 20th Century clean throughout, needs inspection ..... Est. \$7,500/10,000



166 ★ **Cayman Virtually Complete to 1943** *Photo* **\$700**  
**GVI, SG #1/126**  
 L.h. to o.g., missing only SG#35, 55 (separate lots), fine to very fine. Scott #1/111, MR1-2, 4-7 \$3,430. SG £2,780 ..... Est. \$1,000/1,400

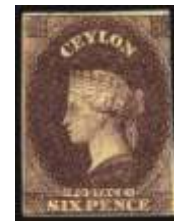
*Ceylon*



167 (★) **1857, Victoria, 1d Deep Turquoise Blue, Imperf, SG #2** *Photo* **\$200**  
 Large Star watermark, unused, just clear to nice margins all round, excellent color, fine to very fine. Scott #3 \$1,150. SG £1,100 ..... Est. \$300/350



164 ★ **Cayman Islands: 1907, Edward VII, 2 1/2d on 4d, SG #35** *Photo* **\$550**  
 Full o.g., centered, excellent color, very fine, Royal (1983) cert. Scott #20 \$2,000. SG £1,800 ..... Est. \$800/1,000



168 ★ **1859, Victoria, 6d Brown, Imperf, SG #6a** *Photo* **\$1,500**  
 Large Star watermark, large part o.g., large margins to touching top right, nice color and scarce with o.g., fine to very fine for the issue scarce item mint, Friedl (1982) cert. Scott #7 \$10,500. SG £10,000 ..... Est. \$2,000/3,000



165 ★ **Cayman Islands: 1919 War Tax, 1 1/2d on 2 1/2d, SG #55** *Photo* **\$275**  
 Full o.g., decent centering, rich color, very fine, BPA (2004) cert. Scott #MR3 \$850. SG £750 ..... Est. \$350/400



169 ★ **1857, Victoria, 10d Dull Vermilion, Imperf, SG #9** *Photo* **\$220**  
 Large Star watermark, large part o.g., close to nice margins all round, fresh for this, fine to very fine for the issue, Royal (1949) cert. Scott #10 \$950. SG £900 ..... Est. \$300/400

Lot	Description	Start Bid	Lot	Description	Start Bid
					
170 ★	<b>1861, Victoria, 8d Brown, Clean-Cut Perf 14 to 15½, SG #24</b> <i>Photo</i> <b>\$400</b> Large Star watermark, dist. full o.g., h.s. on reverse, excellent color, overall very fine. Scott #21 \$2,350. SG £2,500 ..... Est. \$600/800		174 ★	<b>1862, Victoria, 1/- Slate Purple, Perf 13, SG #43</b> <i>Photo</i> <b>\$400</b> Unwatermarked, part o.g., excellent color, light gum creases, otherwise fine to very fine rare, <i>ex Hackmey</i> RPS (1994) cert. Scott #43 \$2,100. SG £1,800 ..... Est. \$500/700	
					
171 ★	<b>1861, Victoria, 6d Deep Brown, Rough Perf 14 to 15½, SG #31</b> <i>Photo</i> <b>\$300</b> Large Star watermark, part o.g., nice color, almost very fine. Scott #28a \$1,250. SG £1,300 ..... Est. \$400/500		175 ★	<b>1866, Victoria, 5d Yellow Olive, SG #54b</b> <i>Photo</i> <b>\$275</b> Crown CC watermark (23mm high), dist. o.g., slight gum tone spots, fresh on face, fine overall. Scott #52 \$1,700. SG £900 ..... Est. \$400/500	
					
172 ★	<b>1864, Victoria, 10d Dull Vermilion, Perf 12½, SG #38</b> <i>Photo</i> <b>\$70</b> Large Star watermark, "some original gum", fresh, fine to very fine for the issue, <i>ex Hackmey</i> BPA (1995) cert. Scott #37 \$325. SG £325 ..... Est. \$100/130		176 ★	<b>1883, Victoria, 24c Brown Purple, Unissued, SG #152</b> <i>Photo</i> <b>\$400</b> Crown CA watermark, o.g. (h.r.), unusually nice color, very fine, Sismondo (2008) cert. Scott #94 \$1,675. SG £1,600 ..... Est. \$500/700	
					
173 (★)	<b>1862, Victoria, 9d Brown, Perf 13, SG #42</b> <i>Photo</i> <b>\$300</b> Unwatermarked, unused, good color, fine, <i>ex Hackmey</i> RPS (1994, 1950) certs. Scott #42 \$1,400. SG £1,300 ..... Est. \$400/600		177 ★	<b>1885, Victoria, 5c on 48c Rose, SG #157</b> <i>Photo</i> <b>\$450</b> Crown CC watermark, o.g., usual centering, fine, Rendon (1996) cert. Scott #98 \$2,100. SG £2,500 ..... Est. \$600/800	



<i>Lot</i>	<i>Description</i>	<i>Start Bid</i>	<i>Lot</i>	<i>Description</i>	<i>Start Bid</i>
------------	--------------------	------------------	------------	--------------------	------------------



178 ★ **1885, Victoria, 10¢ on 24¢ Green, SG #162** *Photo* **\$150**  
 Crown CC watermark, o.g., excellent color, very fine and choice, signed Brun. Scott #102 \$525. SG £500 ..... Est. \$200/250



182 ★ **1912, GV, 500r Dull Green, SG #322** *Photo* **\$3,000**  
 MCA watermark, full o.g., nice color, overall very fine popular issue, Sismondo (2008) cert. Scott #217 \$7,250. SG £7,500 ..... Est. \$3,500/4,000



179 ★ **1885, Victoria, 10¢ on 64¢ Red Brown, SG #164** *Photo* **\$100**  
 Crown CC watermark, "part o.g. disturbed" (our dist. o.g.), fine to very fine for this, BPA (1999) cert. Scott #104 \$475. SG £450 ..... Est. \$150/200



183 ★ **1924, GV, 100r Brownish Gray, SG #359** *Photo* **\$800**  
 Multiple Script CA watermark, full o.g., fresh, overall very fine, BPA (2011) cert. Scott #246 \$2,750. SG £2,750 ..... Est. \$1,000/1,200



180 ★ **1885, Victoria, 5¢ on 32¢ Slate, Perf 14 x 12½, SG #172** *Photo* **\$230**  
 Crown CC watermark, flat gum, deep rich color, fine. Scott #112 \$900. SG £850 ..... Est. \$300/350



184 ★ **1927, GV, 100r Dull Purple & Blue, SG #360** *Photo* **\$800**  
 Multiple Script CA watermark, o.g., offset on gum, very well centered, very fine. Scott #247 \$2,500. SG £1,900 ..... Est. \$1,000/1,300



181 ★ **1912, GV, 100r Gray Black, SG #321** *Photo* **\$700**  
 MCA watermark, o.g., well centered, very fine and choice. Scott #216 \$2,200. SG £2,500 ..... Est. \$1,000/1,300

185 ★ **1938-44 GVI Set, SG #386-397** *Web* **\$150**  
 L.h. to o.g. plus all perf varieties, fine to very fine. Scott #278-289A. SG £1,200 (n.h.) ..... Est. \$250/300

Lot Description Start Bid Lot Description Start Bid



186 ★ **Balance of Collection to 1940** *Photo* **\$2,400**  
 Starting SG#2 with all issues well represented (GVI set separate lot), 1885 on virtually complete except high rupee values, 1872-80 issue complete, War Tax and Officials complete, excellent colors throughout 19th & 20th Century, few earlies no gum, but mostly full o.g., 4 certs incl. SG#32a part o.g. #3a unused, fine to very fine ..... Est. \$3,000/3,500



187 ★ **Cook Islands Complete to 1940** *Photo* **\$550**  
 Per Scott, l.h. to o.g., fresh colors throughout, fine to very fine. Scott #1-115 \$3,309 ..... Est. \$750/1,000

188 ★ **Cook Islands - Aitutaki Complete, SG #1-32** *Web* **\$70**  
 Per Scott, l.h. to o.g., fine to very fine. Scott #1-36 \$369. SG £316 ..... Est. \$100/140

189 ★ **Cook Islands - Penrhyn Island Complete** *Web* **\$60**  
 L.h. to o.g., fresh and fine to very fine. Scott #1-34 \$292 ..... Est. \$80/100

*Cyprus*



190 ★ **1881, Victoria, 6pi Olive Gray, SG #15** *Photo* **\$550**  
 Crown CC watermark, full o.g. (minor hinge remnant), excellent fresh color, almost very fine. Scott #15 \$1,900. SG £1,700 ..... Est. \$700/900



191 ★ **1882, Victoria, 30pa on 1pi Rose, SG #24** *Photo* **\$375**  
 Crown CC watermark, full o.g., great shade, fine or better, signed A Diena, Brandon (2004) cert. Scott #17 \$1,750. SG £1,600 ..... Est. \$500/700



192 ★ **1923, GV, £1 Purple & Black, SG #101** *Photo* **\$375**  
 MCA watermark, o.g. (h.r.), exceptionally well centered, rich colors, choice copy, very fine, *ex Gibraltar*, Gross PF (1970) cert. Scott #88 \$1,400. SG £1,300 ..... Est. \$500/700



193 ★★ **1924, GV, £1 Purple & Black, SG #102** *Photo* **\$140**  
 N.h., control # copy, pencil notations on reverse, centered right, lovely color, fine and attractive. Scott #110 \$350+. SG £300+ ..... Est. \$200/300



194 ★ **1928, GV, £5 Black, SG #117a** *Photo* **\$850**  
 Full o.g., lovely sharp color, fine and scarce very popular stamp. Scott #109 \$3,250. SG £3,750 ..... Est. \$1,200/1,500

Lot Description Start Bid Lot Description Start Bid



195 ★ **Virtually Complete Collection to 1944**  
**GVI** *Photo* **\$1,400**  
 L.h. to o.g. throughout with excellent colors in the 19th Century, missing only a few items for completion, fine to very fine lot ..... Est. \$2,000/2,500



199 ★ **Falkland Islands: 1933 Centenary Set,**  
**SG #127/38** *Photo* **\$2,000**  
 O.g., high values no hinge remnants, fine to very fine set. Scott #65-76 \$4,301. SG £4,250 ..... Est. \$2,500/3,000



196 ★ **Dominica Intact Collection to 1947**  
**GVI, SG #1-17, 109** *Photo* **\$850**  
 Virtually all o.g., missing only SG#18, incl. #12 pair, variety #24a, unusually fresh collection, fine to very fine. Scott #1-13, 15-111, MR1-5 \$3,950+. SG £3,700 ..... Est. \$1,200/1,600



200 ★ **Falkland Islands Extensive Collection to 1946 GVI** *Photo* **\$1,100**  
 Mostly l.h. to o.g., SG#2 possibly used, #13 (signed), #14 cert., many Victoria shades, incl. rarer SG# listed, complete except lots put up individually in the auction, great colors through the whole collection, good basis for expansion, fine to very fine overall ..... Est. \$1,500/2,000



197 ★ **Falkland Islands: 1912-20, GV Set,**  
**SG #60/9, 67b** *Photo* **\$375**  
 L.h. to o.g. (few with h.r.), fresh, fine to very fine set. Scott #30-40 \$1,317. SG £1,130 ..... Est. \$500/700



201 (★) **1870, Times Express, 1/-, Quadrillé Paper, SG #4** *Photo* **\$375**  
 Unused, pos. 8, showing roulettes on 3 sides, fresh, fine to very fine, BPA (1981) cert. Scott #5 \$2,100 (no gum). SG £2,000 ..... Est. \$500/700



198 ★ **Falkland Islands: 1928, South Georgia Provisional, 2 1/2d on 2d, SG #115** *Photo* **\$300**  
 O.g., additional black surcharge on face, usual centering, fine, BPA (1967) clean cert. Scott #52 \$1,300. SG £1,300 ..... Est. \$400/500



202 (★) **1871, Times Express, 1d, Laid Bâtonné Paper, SG #5** *Photo* **\$240**  
 Unused, rouletted on 2 sides, very fresh for this, fine to very fine, RPS (1984) cert. Scott #6 \$1,150 (no gum). SG £1,100 ..... Est. \$300/400

*Fiji*

Lot Description Start Bid Lot Description Start Bid



203 (★) **1871, Times Express, 3d, Laid Bâtonné Paper, SG #6** *Photo* \$350  
 Unused, roulettes on 1½ sides, fresh and fine, RPS (1976) cert. Scott #7 \$1,900 (no gum). SG £1,800 .... Est. \$450/550



207 ★ **1874, "V.R.", 2d on 6c on 3d, surcharged in black, SG #24** *Photo* \$500  
 Full o.g., centered top, very fresh for this, fine, Friedl (1973) cert. Scott #29 \$2,750. SG £1,800 ..... Est. \$700/900



204 ★ **1871, Times Express, 6d, Laid Bâtonné Paper, SG #7** *Photo* \$350  
 With full o.g., pos. 3, full roulettes on 3 sides, faint tone spot in bottom margin (not mentioned in certs.), otherwise fresh and very fine rare with gum, *ex Sir Gawaine Baillie*, signed Holcombe, Diena (1985), Brandon (1999) certs. Scott #8 \$1,600 (no gum). SG £1,500 ..... Est. \$500/700



208 ★ **1874, "V.R.", 2d on 6c on 3d, Surcharge in Black, SG #25** *Photo* \$550  
 Full o.g. (h.r.), centered left, excellent color, fine and scarce, RPS of Victoria (2001) cert. Scott #27 \$2,750. SG £2,500 ..... Est. \$700/900



205 ★ **1871, Times Express, 1/-, Laid Bâtonné Paper, SG #9** *Photo* \$500  
 Full o.g., pos. 7, showing full roulettes on 3 sides, great color, very fine rare with gum, BPA (2004) cert. Scott #10 \$1,900 (no gum). SG £1,800 ..... Est. \$700/900



209 ★ **1876, "V.R.", 1d, Wove Paper, Doubly Printed, SG #28b** *Photo* \$200  
 Very l.h., fine to very fine and attractive, PF (2006) cert. Scott #33b \$1,000. SG £550 ..... Est. \$250/300



206 ★ **1874, "V.R.", 2d on 6c on 3d, Surcharge in Red, SG #22** *Photo* \$200  
 Full o.g., deep rich color, fine, Sismondo (2013) cert. Scott #30 \$750. SG £700 ..... Est. \$250/300



210 ★ **Balance of Collection to 1949 GVI** *Photo* \$500  
 Starting with 1871, 1872 surcharges complete, scattered "V.R." overprints incl. SG#19 (cert.), 1876 issue on complete per Scott, Dues with SG#D2-4, later complete, fresh throughout the 19th Century, much fine to very fine ..... Est. \$750/1,000

*Lot*      *Description*      *Start Bid*      *Lot*      *Description*      *Start Bid*



211 ★ **Gambia: 1871, Victoria “Embossed”, 4d Pale Brown, SG #2** *Photo* \$130  
 Unwatermarked, part o.g., good to large margins all round, fresh, choice very fine, signed Bloch, APS (2008) cert. Scott #1 \$550. SG £500 ..... Est. \$200/250



212 ★ **Gambia: 1869, Victoria “Embossed”, 6d Deep Blue, SG #3** *Photo* \$180  
 Unwatermarked, o.g. (h.r.), excellent margins all round, deep color, extremely fine overall. Scott #2 \$625. SG £550 ..... Est. \$250/300



213 ★ **Gambia Balance of Collection to 1946** *Photo* \$650  
 L.h. to o.g. on pages, complete except imperf issues 3 of 6 represented (SG#1a margins all round, no gum), #10A-20A, excellent colors throughout, fine to very fine ..... Est. \$800/1,000



214 ★ **Gibraltar: 1925, GV, £5 Violet & Black, SG #108** *Photo* \$375  
 Multiple Script CA watermark, very l.h., fresh and fine. Scott #93 \$1,750. SG £1,500 ..... Est. \$500/700



215 ★ **Gibraltar Virtually Complete to 1949 GVI** *Photo* \$1,800  
 Missing only £5 per Scott, virtually all l.h. to o.g. (SG#7 no gum-cert.), 1931-33 perf varieties, great colors, fabulous collection, fine to very fine lot. Scott #1-92, 94-118, MR1 \$7,500. SG £6,100 ..... Est. \$2,300/2,600



216 ★ **Gilbert & Ellice Islands Complete to 1940, SG #1-54, D1-8** *Photo* \$300  
 L.h. to o.g., fine to very fine. Scott #1-51, J1-9, MR1 \$1,285. SG £1,213 ..... Est. \$400/500



217 ★ **Gold Coast: 1883, Victoria, 1d Blue, SG #10** *Photo* \$250  
 Crown CA watermark, large part o.g. (h.r.), fresh copy, fine. Scott #12 \$1,000. SG £850 ..... Est. \$350/400



218 ★ **Gold Coast: 1889, Victoria, 20/- Green & Red, SG #24** *Photo* \$1,000  
 Crown CA watermark, l.h., usual centering, very fresh, fine to very fine for the issue, Sismondo (2011) cert. Scott #24 \$3,250. SG £3,250 ..... Est. \$1,200/1,500

Lot Description Start Bid Lot Description Start Bid



219 ★ **Gold Coast Balance of Collection to 1952** *Photo* **\$1,000**  
 Complete except SG#10, #24, #69s (separate lots), l.h. to o.g. (SG#3 questionable, #2 no gum), partial Dues, fine to very fine lot ..... Est. \$1,400/1,800

223 ★ **1888, Victoria, 4d on 2/- Orange, SG #41a** *Photo* **\$200**  
 Full o.g., fresh, fine to very fine, BPA (1991) cert. Scott #33 \$875. SG £800 ..... Est. \$250/300

Grenada



220 (★) **1861, Victoria, 6d Rose, Rough Perf 14 to 16, SG #3** *Photo* **\$200**  
 Regummed, lovely color, about as well centered as it gets, very attractive, overall very fine, RPS (1988) cert. Scott #2 \$1,050. SG £900 ..... Est. \$300/350



224 ★ **Balance of Collection to 1938 GVI** *Photo* **\$1,000**  
 Few earlies regummed, otherwise l.h. to o.g., incl. SG#7 (cert-o.g.), #17 (cert-trace of o.g.), #21b (cert.), 1891 on complete, also #D1-4, 6, 8-14, 19th Century with nice colors, sound throughout, fine to very fine overall ..... Est. \$1,500/2,000



221 ★ **1878, Victoria, 6d Deep Vermilion, Intermediate Perf 15, SG #17** *Photo* **\$230**  
 "part redistributed o.g.", incredible color, typical centering, fine to very fine for the issue, APS (2010) cert. Scott #5D \$925. SG £850 ..... Est. \$300/350



225 ★ **Heligoland: 1879, 5m Deep Green, Aniline Rose & Black, Perf 11 1/2, SG #19a** *Photo* **\$375**  
 O.g. (h.r.), very well centered, signed, Holcombe (1984) copy cert. Scott #25 \$1,500. Michel #20B €1,800. SG £1,300 ..... Est. \$500/600



222 ★ **1883, Victoria, 1/2d Orange, Unsevered Pair, SG #29a** *Photo* **\$350**  
 Full o.g., slight tone spot on reverse only, fresh copy, fine, RPS (1946) cert. Scott #15a \$2,000. SG £1,500 ..... Est. \$500/700

226 ★ **Heligoland Mostly Complete Collection** *Web* **\$350**  
 L.h. to o.g., incl. occasional cert., few signed, numerous shades, probably all genuine, fresh, fine to very fine ..... Est. \$500/700

*Lot Description Start Bid Lot Description Start Bid*

*Hong Kong*



227 ★ **1862, Victoria, 8c Yellow Buff, SG #2** *Photo* \$200  
 Unwatermarked, part o.g., well centered, very fine. Scott #2 \$775. SG £750 ..... Est. \$250/350



228 (★) **1862, Victoria, 48c Rose, SG #6** *Photo* \$600  
 Unwatermarked, regummed, fresh for this, fine to very fine. Scott #6 \$3,000. SG £2,750 ..... Est. \$800/1,000



229 (★) **1862, Victoria, 96c Brownish Gray, SG #7** *Photo* \$900  
 Unwatermarked, unused, rich color and strong impression, fine and rare virtually non-existent with gum, Sismondo (2012) cert. Scott #7 \$4,000. SG £3,750 .. Est. \$1,200/1,500



230 ★ **1865, Victoria, 48c Rose Carmine, SG #17a** *Photo* \$300  
 Crown CC watermark, full o.g., rich color, fine to very fine. Scott #21 \$1,100. SG £950 ..... Est. \$400/500



231 ★ **1880, Victoria, 5c on 8c Bright Orange, SG #23** *Photo* \$300  
 O.g., fresh, well centered, excellent color, very fine. Scott #31 \$1,100. SG £1,100 ..... Est. \$400/600



232 ★ **1880, Victoria, 5c on 18c Lilac, SG #24** *Photo* \$250  
 O.g. (h.r.), rich color, fine to very fine. Scott #32 \$1,050. SG £950 ..... Est. \$350/450



233 (★) **1880, Victoria, 10c on 16c Yellow, SG #26** *Photo* \$500  
 Regummed, excellent color, fine to very fine. Scott #34 \$4,750. SG £4,250 ..... Est. \$750/1,000



234 ★ **1880, Victoria, 5c Blue, SG #29** *Photo* \$200  
 Crown CC watermark, large part o.g. (h.r.), excellent color, fine to very fine. Scott #11 \$650. SG £750 ..... Est. \$300/350



235 ★ **1882, Victoria, 10c Dull Mauve, SG #36** *Photo* \$230  
 Crown CA watermark, o.g. (small h.r.), fine or better. Scott #42 \$950. SG £1,000 ..... Est. \$300/400

*Lot*      *Description*      *Start Bid*      *Lot*      *Description*      *Start Bid*



236 ★ **1885, Victoria, \$1 on 96¢ Gray Olive, SG #42** *Photo* **\$200**  
 Full o.g., fresh, fine or better, BPA (1999) cert. Scott #55 \$825. SG £750 ..... Est. \$300/350



240 ★ **1912-21, GV Set, SG #100/116** *Photo* **\$700**  
 MCA watermark, l.h. to o.g. (SG#115 n.h.), excellent colors, very fine overall. Scott #109-124 \$3,071. SG £2,644 ..... Est. \$1,000/1,300



237 ★ **1891, Victoria, \$1 on 96¢ Purple & Red, SG #47** *Photo* **\$250**  
 L.h. (tiny hinge remnant), well centered, choice very fine. Scott #56 \$900. SG £800 ..... Est. \$350/400



241 ★ **1921-37, GV Set, SG #117/132** *Photo* **\$300**  
 Multiple Script CA watermark, l.h. to o.g. (25c, \$1 large part o.g.), excellent colors, very fine for the issue. Scott #129-146 \$1,102. SG £950 ..... Est. \$400/500



238 ★ **1903, Edward VII Set, SG #62/76** *Photo* **\$850**  
 Crown CA watermark, l.h. to o.g., fresh throughout, overall very fine. Scott #71-85 \$2,997. SG £2,000 ..... Est. \$1,000/1,300



242 ★ **1938-52, GVI Set, SG #140/162** *Photo* **\$200**  
 L.h. to o.g., fine to very fine. Scott #154-166A \$800. SG £1,100 (n.h.) ..... Est. \$250/300



239 ★ **1904-11, Edward VII Set, SG #77/99** *Photo* **\$550**  
 MCA watermark, o.g., \$10 pulled corner perf, fresh throughout, fine to very fine. Scott #86-108 \$4,250. SG £3,900 ..... Est. \$800/1,000



243 ★✉ **Postal Card: 1879 Victoria 3¢ on 5¢ on 18¢ Lilac, SG #P3** *Photo* **\$1,500**  
 Mint, usual centering, very fresh, immaculate and very fine, served as prepayment, paid postcard rate to UK via Marseilles and Southampton Holcombe (2013) cert. Scott #35C \$6,500. SG £8,000 ..... Est. \$2,000/2,500



Lot Description Start Bid Lot Description Start Bid



244 ★ **Postal-Fiscal: 1892, \$10 Gray Green, Perf 14, SG #F6** *Photo* **\$3,500**  
 Full o.g., nicely centered, lovely color, very fine to extremely fine and rare, Sismondo (2012) cert. Scott #59 \$12,000. SG £12,000 ..... Est. \$5,000/7,000



248 ★ **Official: 1891, 10¢ Purple, Overprinted "S.O.", SG #S3** *Photo* **\$450**  
 O.g. (h.r.), very fine, signed Brun. Scott #60C \$1,900. SG £1,700 ..... Est. \$600/800



245 ★ **Postal-Fiscal: 1880, 12¢ on \$10 Rose Carmine, SG #F7** *Photo* **\$200**  
 Large part o.g. (h.r.), slight soiling at right margin, Sismondo (2012) clean cert. Scott #50 \$1,000. SG £900 ..... Est. \$300/400



249 ★ **British Offices in China Complete, SG #1-28** *Photo* **\$700**  
 1917-21, 1922-27 sets plus 50c on emerald (SG#12b), l.h. to o.g. (few with h.r.), very fresh, fine to very fine. Scott #1-27, 11b \$3,042. SG £2,980 ..... Est. \$1,000/1,300



246 ★ **Official: 1891, 2¢ Overprint "S.O.", SG #S1** *Photo* **\$200**  
 Toned o.g., fine to very fine, Brandon (2008) cert. Scott #60A \$1,100. SG £950 ..... Est. \$300/400



250 ★ **Balance of Collection** *Photo* **\$3,000**  
 1862 to 1902, 1935-1937 plus Dues complete, Fiscals SG#F1-2, F4-5, P1-2, all issues represented incl. SG#1, 3, 1863-80 "CC" to 96c, #21, 1882-1902 "CA" to 30c complete except 10c lilac (separate lot), surcharges to \$1, etc., few unused or regummed on early issues, very fresh throughout, fine to very fine ..... Est. \$4,000/6,000



247 ★ **Official: 1891, 2¢ Overprint "S.D.", SG #S2** *Photo* **\$140**  
 O.g. (h.r.), deep color, very fine. Scott #60B \$1,050. SG £450 ..... Est. \$200/300

Lot	Description	Start Bid	Lot	Description	Start Bid
-----	-------------	-----------	-----	-------------	-----------

## India



- 251 ★ **1855, Victoria Typographed, 8a, Blue Glazed Paper, SG #36** *Photo* \$150  
 Large part o.g. (h.r.), toned perf tip, fine and attractive, signed Oliva. Scott #10 \$650. SG £850 ..... Est. \$200/300



- 252 (★) **1865, Victoria "Crown Colony" Issue, 8a, SG #65** *Photo* \$400  
 Large part o.g., very fresh, centered, very fine and scarce, Royal (2011) cert. Scott #25 \$2,000. SG £3,750 ..... Est. \$600/800



- 253 ★ **1902-11, Edward VII Set, SG #119/47** *Photo* \$400  
 L.h. to o.g., usual light gum toning, 5r tone spot, also 1905 surcharge and 1906-07 set of 2, fine to very fine. Scott #60-75 \$1,434. SG £2,507 ..... Est. \$600/800



- 254 ★ **Official: 1866 Victoria "Service" 2a, SG #015** *Photo* \$140  
 Large part o.g., excellent color, very fine, Sismondo (2011) cert. Scott #011 \$350. SG £600 ..... Est. \$200/250



- 255 ★ **Balance of Collection** *Photo* \$2,000  
 Sparse early 19th Century but incl. 1854 1/2a, 1a, 2a, SG #42, 45, 1873-76 issue on complete except Edward VII set, also Airs, CEF, IEF complete, scattered early Officials but incl. #O19, 1874 on complete, few earlies with some no gum or regummed, otherwise o.g., fine to very fine lot ..... Est. \$3,000/4,000



- 256 ★ **Jamaica Complete Collection to 1951 GVI, SG #1-89, 92-133a, O1-5** *Photo* \$700  
 Per Scott, virtually all o.g., with attractive freshness, incl. Officials, fine to very fine overall. Scott #1-128, MR1-11, O1-4 \$4,256. SG £3,900 ..... Est. \$1,000/1,400

## Kenya, Uganda & Tanganyika

### British East Africa



- 257 ★ **1890, 4a on G.B. 5d Dull Purple & Blue, SG #3** *Photo* \$180  
 O.g., very fine. Scott #3 \$600. SG £600 ..... Est. \$250/300



- 258 ★ **1891, Mombasa Manuscript Surcharge, 1/2a on 2a, Initialed "A.B.", SG #23** *Photo* \$3,000  
 O.g., few gum tone spots on reverse only (not mentioned in certs), signed "AB" (Archibald Brown), fine and rare very few exist, PF (1994), Sismondo (2014) certs. Scott #33 \$17,000. SG £10,000 ..... Est. \$4,000/6,000

*Lot*                      *Description*    *Start Bid*                      *Lot*                      *Description*    *Start Bid*



259 (★) **1895 Overprint 4½a Brown Purple, SG #39b** *Photo* **\$200**  
 Unused, well centered, fresh, overall very fine, PF (1987) cert. Scott #44a \$1,450. SG £1,200 ..... Est. \$300/400



263 ★ **1897, Victoria, 50r Mauve, SG #99** *Photo* **\$550**  
 L.h., lovely fresh centered copy, very fine stamp. Scott #109 \$2,000. SG £2,250 ..... Est. \$800/1,000



260 ★ **1897, 2½a Surcharges on Zanzibar Issues Set, SG #86/91** *Photo* **\$300**  
 O.g. to part o.g. (h.r.), difficult set, fresh and fine to very fine. Scott #95-100 \$1,190. SG £1,100 ..... Est. \$400/500



264 ★ **Balance of Collection to 1897** *Photo* **\$1,400**  
 Mostly complete l.h. to o.g. except SG#3, Mombasa provisionals, #32, 1895 on complete to 1897 overprint set, excellent colors, fine to very fine ..... Est. \$2,000/2,500

*East Africa & Uganda*



261 ★ **1898 Victoria to 10r, SG #92-97** *Photo* **\$450**  
 O.g. to part o.g. (h.r.), 5r gum slightly dist. from hinging, rich colors, fine to very fine. Scott #102-107 \$1,720. SG £1,745 ..... Est. \$600/800



265 ★ **1903-04, Edward VII ½a-20r, SG #1/15** *Photo* **\$375**  
 Crown CC watermark, o.g., good colors for this issue, fine to very fine lot. Scott #1-15 \$1,250. SG £1,616 . Est. \$500/700



262 ★ **1897, Victoria, 20r Pale Green, SG #98** *Photo* **\$275**  
 O.g., rich color, fine. Scott #108 \$1,000. SG £1,100 ..... Est. \$350/450



266 ★ **1903, Edward VII, 50r Gray & Red Brown, SG #16** *Photo* **\$550**  
 Crown CC watermark, full o.g., deep color, fine or better. Scott #16 \$1,900. SG £1,900 ..... Est. \$700/900

*Lot*      *Description*      *Start Bid*      *Lot*      *Description*      *Start Bid*



267 ★ **1904-07, Edward VII ½2a-20r, SG #17/32** *Photo* **\$250**  
 MCA watermark, o.g. (few h.r.), 20r slight rubbing, otherwise fine to very fine. Scott #17-30 \$1,378. SG £1,425 ..... Est. \$350/450



271 ★ **1912, GV, 50r Dull Rose Red & Dull Grayish Green, SG #61** *Photo* **\$275**  
 MCA watermark, o.g., fresh, almost very fine. Scott #57 \$900. SG £800 ..... Est. \$350/400



268 ★ **1907, Edward VII, 50r Gray & Red Brown, SG #33** *Photo* **\$400**  
 MCA watermark, l.h., rich color, fine. Scott #30A \$2,100. SG £2,250 ..... Est. \$600/800



272 ★ **1912, GV, 100r Purple & Black, SG #62** *Photo* **\$1,400**  
 MCA watermark, very l.h. (possibly n.h.-pencil notation on reverse), light gum crease, very well centered, lovely extremely fine appearance, Dutertre (1993) cert. Scott #58 \$6,000. SG £7,500 ..... Est. \$2,000/2,500

269 ★ **1907-08, Edward VII, 1c-75c Complete, SG #34/42** *Web* **\$30**  
 L.h. to o.g., fine to very fine. Scott #31-39 \$111. SG £95 ..... Est. \$40/50



273 ★ **1921 GV, Set to 5r, SG #65-74** *Photo* **\$100**  
 O.g., 5r gum wrinkle, fine to very fine. Scott #1-10 \$470. SG £425 ..... Est. \$140/180



270 ★ **1912-21, GV 1c-20r, SG #44/60** *Photo* **\$375**  
 MCA watermark, both 20r values, o.g. plus SG#50a, #52a, #64, fresh colors throughout, fine to very fine for the issue. Scott #40-56 \$1,289. SG £1,258 ..... Est. \$500/700



274 ★ **1921, GV, 50r Carmine & Green, SG #75** *Photo* **\$750**  
 Multiple Script CA watermark, l.h., generally fine. Scott #11 \$3,250. SG £3,000 ..... Est. \$1,000/1,300

Lot Description Start Bid Lot Description Start Bid

*Kenya & Uganda*



275 ★ **1922-27, GV 1c-£1, SG #76/95** Photo \$140  
 L.h. to o.g. (few h.r.), rich color. Scott #18-37 \$565. SG £475 ..... Est. \$200/250



276 ★★ **1925, GV, £2 Green & Purple, SG #96** Photo \$450  
 N.h., beautiful deep rich shade, immaculate and very fine. Scott #38 \$900. SG £1,000 ..... Est. \$600/800



277 ★ **1925, GV, £3 Purple & Yellow, SG #97** Photo \$500  
 O.g., incredibly sharp color, fine to very fine. Scott #39 \$1,650. SG £1,500 ..... Est. \$700/900



278 ★ **1925, GV, £4 Black & Magenta, SG #98** Photo \$700  
 L.h., usual gum, fresh, fine to very fine, Raybaudi (2007) cert. Scott #40 \$2,200. SG £2,500 ..... Est. \$1,000/1,300



279 ★ **1922, GV, £5 Black & Blue, SG #99** Photo \$1,500  
 O.g., excellent centering, lovely shade, clean gum, extremely fine, ex "Trillium" PF (2010) cert. Scott #41 \$6,000. SG £2,750 ..... Est. \$2,000/2,500

280 ★ **1935 to 1954 Balance of Collection** Web \$250  
 L.h. to o.g., GVI set plus all varieties, Dues complete, fine to very fine ..... Est. \$350/450



281 ★ **Kuwait Complete to 1939, SG #1-51, O1-27** Photo \$750  
 L.h. to o.g., SG#13 crease, fresh throughout, fine to very fine lot. Scott #1-57, C1-4 \$3,875. SG £3,645 ..... Est. \$1,000/1,400



282 ★ **Leeward Islands Complete to 1951 GVI, SG #1-114** Photo \$550  
 L.h. to o.g., SG#16 cert, fine to very fine. Scott #1-115 \$2,654. SG £1,860 ..... Est. \$750/1,000

*Lot Description Start Bid Lot Description Start Bid*

Malaysian States

Straits Settlements



283 ★ **1867, Crown and 12c on India 4a, SG #7** *Photo* **\$230**  
 "Small part o.g. which has been enhanced", slight soiling not mentioned in cert., usual centering, fine for the issue, Sismondo (2014) cert. Scott #7 \$1,175. SG £1,200  
 ..... Est. \$300/400



284 ★ **1880, Victoria, 10 on 30c Claret, SG #35** *Photo* **\$275**  
 Full o.g., fresh copy for this, fine to very fine, BPA (1989) cert. Scott #23 \$850. SG £850 ..... Est. \$350/400



285 ★ **1884, Victoria, 4c on 5c, Surcharged in Black, SG #72** *Photo* **\$800**  
 O.g., excellent color for this, immaculate and very fine, Brandon (1999) cert. Scott #67 \$3,500. SG £3,500  
 ..... Est. \$1,200/1,500



286 ★ **1912, GV, \$100 Black & Carmine, SG #214** *Photo* **\$2,400**  
 Watermarked MCA, l.h., attractive colors, fine to very fine, signed Diena, Sismondo (2014) cert. Scott #173 \$8,500. SG £9,000 ..... Est. \$3,000/4,000



287 ★ **1923, GV, \$25 Purple & Blue, SG #240b** *Photo* **\$375**  
 Watermarked Multiple Script CA, o.g., well centered, very fine and attractive. Scott #202 \$1,200. SG £1,300  
 ..... Est. \$500/700



288 ★ **Extensive Balance of Collection to GVI** *Photo* **\$2,000**  
 Virtually all o.g., starting SG#1-4, 8-9, 1867-72 set complete except 24c, scattering of surcharges incl. #22 (cert.), many items cat. hundreds of £'s each, Victoria issue on virtually complete except rarities, Dues complete  
 ..... Est. \$3,000/4,000



289 ★ **Federated States: 1900, "Malay Elephants", \$25, SG #26** *Photo* **\$1,000**  
 Watermarked Crown CC, o.g. (h.r.), well centered, excellent color, choice very fine, Sismondo (2014) cert. Scott #17 \$3,500. SG £3,750 ..... Est. \$1,400/1,800



290 ★ **Federated States: 1909, "Malay Elephants", \$25, SG #51** *Photo* **\$450**  
 Watermarked MCA, o.g., excellent colors, very fine and choice, Sismondo (2014) cert. Scott #37 \$1,500. SG £1,700  
 ..... Est. \$600/800

*Lot Description Start Bid Lot Description Start Bid*



291 ★ **Federated States: 1928, "Malay Elephants", \$25, SG #82** *Photo* \$400  
 Watermarked Multiple Script CA, l.h., very fresh, overall very fine. Scott #76 \$1,300. SG £1,500 ..... Est. \$500/700



295 ★ **Johore Virtually Intact to 1940** *Photo* \$800  
 Full o.g. throughout, most overprints except rarities, 1892 issue on complete incl. SG#32a-38a, Dues complete, excellent colors overall for 19th Century which is known for fading and toning, fine to very fine lot ..... Est. \$1,250/1,500



292 ★ **Federated States Balance 1900 to 1934, SG #1/82, D1-6** *Photo* \$1,000  
 O.g., virtually complete per Gibbons, complete per Scott except \$25 values, Dues complete incl. Postal Union 1936-38 set, unusually fresh for this region, fine to very fine. Scott #1/79, J1-12 \$4,239. SG £3,200 ..... Est. \$1,500/2,000

296 ★ **Kedah 1912 to 1937 Complete, SG #1-68** *Web* \$275  
 L.h. to o.g. (occasional h.r.), excellent colors, fine to very fine. Scott #1-54 \$1,056. SG £887 ..... Est. \$350/450



297 ★ **Kelantan: 1937-40 Ismail Set, SG #40-54** *Photo* \$240  
 L.h. to o.g., excellent colors, very popular, a very fine set. Scott #29-43 \$676. SG £1,200 (n.h.) ..... Est. \$300/350



293 ★ **Johore: 1922, Sultan Ibrahim, \$50, SG #126** *Photo* \$300  
 Watermarked Multiple Script CA, o.g., trace of gum toning, well centered, fresh on face. Scott #123 \$1,200. SG £1,400 ..... Est. \$400/500

298 ★ **Kelantan Complete to 1935, SG #1-39a** *Web* \$230  
 L.h. to o.g. (occasional h.r.), excellent colors, fine to very fine. Scott #1-28 \$840. SG £750 ..... Est. \$300/350

*Negri Sembilan*



294 ★ **Johore: 1922, Sultan Ibrahim, \$100, SG #127** *Photo* \$450  
 Watermarked Multiple Script CA, full o.g., centered, very nice color, very fine and attractive, signed on reverse, Brandon (2000) cert. Scott #124 \$1,800. SG £1,900 ..... Est. \$600/800



299 ★ **Sungei Ujong: 1882-1884 4c, Overprint Type 12+14, SG #22** *Photo* \$450  
 Part o.g., well centered, nicer copy than normally seen, fine to very fine scarce, Sismondo (2014) cert. Scott #5 \$1,950. SG £1,700 ..... Est. \$700/900

Lot	Description	Start Bid	Lot	Description	Start Bid
					
300 ★	<b>Sungei Ujong: 1882-84 8c, Type 11+14, SG #25</b> Dist. part o.g. from gum loss in hinge area, "few toned perf tips" mostly on back, fine to very fine overall, signed, Sismondo (2014), BPA (1968) certs. Scott #17 var. SG £3,250 <i>very scarce</i> ..... Est. \$1,000/1,300	<i>Photo</i> \$700	304 ★	<b>Sungei Ujong 1880s to 1890s and Negri Sembilan 1891 to 1941 Balances</b> Sungei Ujong with better surcharges throughout incl. SG#12-13, #27 (cert.), #29 (cert.), Negri Sembilan l.h. to o.g., missing SG#20, excellent colors, very popular, fine to very fine ..... Est. \$800/1,000	<i>Photo</i> \$500
					
301 ★	<b>Sungei Ujong: 1891 2c on 24c Type 31 Surcharge, SG #46</b> Slightly toned o.g. (small h.r.), notations on reverse, fresh on face, fine to very fine overall, Sismondo (2014) cert. Scott #27 \$1,100. SG £1,100 ..... Est. \$400/500	<i>Photo</i> \$300	305 ★	<b>Pahang: 1891 2c Surcharge (Type 6), SG #8</b> Full o.g., excellent centering, very nice color for this, very fine and choice, BPA (2009) cert. Scott #7 \$1,100. SG £1,200 ..... Est. \$450/550	<i>Photo</i> \$375
					
302 ★	<b>Sungei Ujong: 1891 2c on 24c Type 33 Surcharge, SG #48</b> Slightly toned o.g. (h.r.), fine to very fine, Sismondo (2014) cert. Scott #30 \$1,100. SG £1,100 ..... Est. \$400/500	<i>Photo</i> \$300	306 ★	<b>Pahang: 1898-99 Watermark Crown CC \$5 Overprint Type 12, SG #24</b> O.g., excellent white gum, very well centered and nice color, very fine to extremely fine, BPA (2010) cert. Scott #20 \$1,700. SG £1,600 ..... Est. \$700/900	<i>Photo</i> \$500
					
303 ★	<b>Negri Sembilan: 1899 Black Surcharge 4c on 8c, SG #20</b> L.h., very fresh example, very fine, PF (1995) cert. Scott #16 \$1,400. SG £1,400 ..... Est. \$500/700	<i>Photo</i> \$400	307 (★)	<b>Pahang: 1899 Provisional "Pahang Five Cents", SG #27</b> Unused, usual slight toning, completely sound, fine for this, Sismondo (2014) cert. Scott #27 \$3,000. SG £2,750 <i>rarely seen</i> ..... Est. \$1,000/1,300	<i>Photo</i> \$700



Lot	Description	Start Bid	Lot	Description	Start Bid
-----	-------------	-----------	-----	-------------	-----------



308 ★ **Pahang 1889 to 1941 Balance** *Photo* **\$500**  
 L.h. to o.g., missing only the expensive items, incl. 1898 Pahang overprints to \$1 (\$5 separate lot), SG#7, #9 certs., unusually fresh collection, fine to very fine ... Est. \$750/1,000



312 ★ **Selangor: 1882 2c Red Crescent & Star Overprint, SG #unlisted** *Photo* **\$275**  
 Bottom marginal pair, large part o.g., as Type I of Perak, fine to very fine and attractive, *officially issued, per Gibbons' may have been produced for sale to collectors" BPA (1996) cert.* Scott #2 \$1,200+. SG £750+ ..... Est. \$400/500



309 ★ **Perak: 1886 1c on 2c Rose Type 28 Surcharge, SG #31** *Photo* **\$300**  
 L.h., fresh and fine example, signed Bloch. Scott #18A \$1,100. SG £1,400 ..... Est. \$400/500



313 ★ **Selangor: 1895 Elephant \$10, SG #65** *Photo* **\$230**  
 Full o.g. with white gum, incredible rich color, well centered, extremely fine. Scott #40 \$800. SG £850 ..... Est. \$300/400



310 ★ **Perak: 1887-89 1c on 2c Type 35 Surcharge, SG #38** *Photo* **\$200**  
 O.g., deep shade, fine, BPA (2011) cert. Scott #21 \$800. SG £700 ..... Est. \$300/400



314 ★ **Selangor: 1895 Elephant \$25, SG #66** *Photo* **\$1,200**  
 Large part o.g., exceedingly well centered, good color, very fine and attractive, Friedl (1973) cert. Scott #41 \$4,000. SG £4,500 ..... Est. \$1,600/2,000



311 ★ **Perak Balance of Collection to 1941** *Photo* **\$1,000**  
 Virtually o.g. on all (few h.r. on early), incl. some of the better surcharges incl. SG#16 unused (cert.), 1895-99 to \$2, \$5, beautiful colors throughout, also Officials, fine to very fine ..... Est. \$1,500/2,000



315 ★ **Selangor Balance of Collection to 1941** *Photo* **\$700**  
 Virtually o.g. on all (few h.r. on early), incl. better surcharges starting SG#20 and incl. #40 (cert.), 1891 2c surcharge on complete except #65-66 (separate lots), excellent colors, fine to very fine ..... Est. \$1,000/1,400

*Lot*      *Description*      *Start Bid*      *Lot*      *Description*      *Start Bid*



316 ★★ **Trengganu: 1910-19 Watermark MCA \$25 Suleiman, SG #18** *Photo* \$500  
 N.h., great colors and gum, sharp impression, very fine and choice. Scott #19 \$1,200. SG £1,500 ..... Est. \$800/1,000



317 ★ **Trengganu: 1921 Watermark Script MCA \$25, SG #45** *Photo* \$275  
 O.g., perfectly centered, sharp color, virtually extremely fine, PF (1970) cert. Scott #39 \$750. SG £1,100 ... Est. \$350/400



318 ★ **Trengganu: 1921 Watermark Script MCA \$50, SG #46** *Photo* \$550  
 O.g., centered, fresh on face, attractive very fine appearance, Sismondo (2014) cert. Scott #40 \$1,850. SG £2,740 ..... Est. \$800/1,000



319 ★ **Trengganu Balance of Collection to 1938** *Photo* \$450  
 L.h. to o.g., complete except \$25, \$50, and \$100 values, Exhibition overprint set (cert.) with varieties, Semis and Dues complete, all fresh, fine to very fine. Scott \$1,733+. SG £2,000+ ..... Est. \$600/800

320 ★ **Maldives Complete to 1933, SG #1-20** *Web* \$80  
 L.h. to o.g., fine to very fine. Scott #1-19 \$406. SG £345 ..... Est. \$120/150

*Malta*



321 ★ **1860, 1/2d Buff on Bluish, SG #1** *Photo* \$300  
 Unwatermarked, full o.g., excellent color for this notorious issue, fine to very fine for this, APS (1998) cert. Scott #2 \$1,300. SG £1,300 ..... Est. \$400/500



322 ★ **1919, 10/- Black, SG #96** *Photo* \$850  
 Multiple Crown watermark, o.g. (h.r.), sharp impression, fresh and fine to very fine. Scott #65 \$3,500. SG £3,250 ..... Est. \$1,200/1,500



323 ★ **Virtually Complete to 1938 GVI** *Photo* \$700  
 Per Scott, earliest mostly o.g. and fresh, incl. 1/2d shades per Gibbons listing, missing only SG #1, #96, Dues complete, fine to very fine overall ..... Est. \$1,000/1,400

*Lot Description Start Bid Lot Description Start Bid*

*Mauritius*



324 ★ **1858, "Britannia", 4d Green, SG #26** *Photo* **\$350**  
 Part o.g., clear to nice margins all round, excellent color, overall very fine, signed Bloch. Scott #12 \$1,650. SG £1,600 ..... Est. \$500/700



328 ★ **1924, Arms of the Colony, 50r, SG #222** *Photo* **\$300**  
 Multiple Script CA watermark, very l.h., very fine. Scott #200 \$1,000. SG £950 ..... Est. \$400/500



325 ★ **1859, "Britannia", 6d Blue, SG #32** *Photo* **\$230**  
 Large part o.g., excellent margins all round, very fine. Scott #18 \$800. SG £750 ..... Est. \$300/350



329 ★ **Balance of Collection Britannia Types to 1943** *Photo* **\$2,400**  
 Earlies with gum starting SG#29 (cert.), #35 (cert.), large margins all round, sound, 1860-63 complete except 6d slate, 1863-77 to 5/-, virtually complete after that incl. Special Delivery, Dues, unusual to see a collection like this with excellent colors throughout, high cat., fine to very fine overall ..... Est. \$3,000/4,000



326 (★) **1859, "Britannia", 1/- Vermilion, SG #34** *Photo* **\$450**  
 Unused, attractive margins all round, rich color, immaculate and very fine, Brandon (1986) cert. for old SG#. Scott #19 \$3,150. SG £3,000 ..... Est. \$600/800

330 ★ **Montserrat Intact to GVI** *Web* **\$550**  
 Complete per Scott, SG#11 regummed, excellent gum and colors throughout, fine to very fine. Scott #1-103 \$4,300+. SG £3,800+ ..... Est. \$800/1,000



327 ★ **1876, Victoria, 1/2d on 9d, Surcharge in Red, Unissued, SG #78** *Photo* **\$700**  
 Large part o.g., usual centering for this issue, fine, Sismondo (2014) cert. Scott #45 \$3,400. SG £3,250 *scarce* ..... Est. \$1,000/1,300

331 ★ **Morocco Agencies Complete Collection to 1940** *Web* **\$450**  
 Per Scott, l.h. to o.g., incl. SG#7c (cert.), fine to very fine. Scott #1-92, 201-245, 401-520 \$2,387 ..... Est. \$600/800

332 ★ **Nauru Complete to 1937, SG #1/47** *Web* **\$240**  
 Per Scott, l.h. to o.g., incl. 1916-23 both 2d shades, fine to very fine. Scott #1-38 \$1,120. SG £925 ..... Est. \$300/400

333 ★ **New Hebrides Complete to 1938, SG #1-63, D1-10** *Web* **\$275**  
 L.h. to o.g. incl. Dues, fine to very fine lot. Scott #1-61, J1-10 \$1,100. SG £1,100 ..... Est. \$350/450

Lot Description Start Bid Lot Description Start Bid

*New Zealand*



- 334 (★) **1857, Victoria "Chalon Head", 6d Brown, Imperf, SG #13** *Photo* \$400  
Unwatermarked, Large Star watermark, regummed, close margins all round, fresh, fine for the issue, Odenweller (2014), Raybaudi (2004) certs. Scott #9 \$2,700. Campbell-Patterson #A5a(3). SG £2,750 ..... Est. \$600/800



- 335 ★ **1862, Victoria "Chalon Head", 3d Brown Lilac, Imperf, SG #40** *Photo* \$200  
Large Star watermark, large part o.g. (h.r.), good to large margins all round, good color, very fine and choice, Odenweller (2014) cert. Scott #13 \$950. Campbell-Patterson #A3a(2). SG £600 ..... Est. \$300/350



- 336 (★) **1862, Victoria "Chalon Head", 6d Black Brown, Imperf, SG #41** *Photo* \$450  
Large Star watermark, unused, nice margins all round, very fresh, fine to very fine and attractive, Odenweller (2013) cert. Scott #14d \$2,000. Campbell-Patterson #A5b(1). SG £1,900 ..... Est. \$600/800



- 337 ★ **1862, Victoria "Chalon Head", 6d Red Brown, Imperf, SG #43** *Photo* \$375  
Large Star watermark, "traces of o.g.", large to close at left bottom, deep rich shade, sound, fine for this, Odenweller (2014), Ceremuga (2010) certs. Scott #14 \$1,625. Campbell-Patterson #A5b(5). SG £1,600 ..... Est. \$500/700



- 338 (★) **1862, Victoria "Chalon Head", 1/- Olive Green, Imperf, SG #45** *Photo* \$300  
Large Star watermark, regummed, large margins to just touching top right, very fresh, fine for the issue, Odenweller (2014) cert. Scott #15g \$2,250. Campbell-Patterson #A6d(3). SG £1,600 ..... Est. \$400/500



- 339 (★) **1862, Victoria "Chalon Head", 1d Carmine Vermilion, Perf 13, SG #69** *Photo* \$700  
Large Star watermark, unused, strong bright color, attractive example, *ex* "Chalon", *Antipodes*", *Hackmey* Holcombe (1988) cert. Scott #16 \$4,500. SG £2,750 ..... Est. \$1,000/1,400



- 340 ★ **1875, Victoria "Side Face", 1d Deep Lilac, SG #178** *Photo* \$450  
Large Star watermark, full o.g., some perf discs uncleaned, very fresh, fine and scarce, Sismondo (2014) cert. Scott #57 \$2,000. SG £1,800 ..... Est. \$600/800



- 341 ★ **Officials: 1892 O.P.S.O. Selection** *Photo* \$850  
Group of 9, o.g. (few with h.r.) consisting of SG#O6, O11-12, O17a, O18, O20, O26, O30-31, fine to very fine rarely seen, *mint copies were for presentation purposes*, 8 with various certs., other signed Bloch ..... Est. \$1,200/1,500

*Lot*      *Description*      *Start Bid*      *Lot*      *Description*      *Start Bid*



342 ★ **Life Insurance: 1891 Set of 7, SG #L1-6** *Photo* **\$350**  
 O.g. (some with h.r.), typical centering, fresh on face, fine to very fine for this. Scott #OY1-6 \$2,115. SG £1,500  
 ..... Est. \$500/700



346 ★ **1906, 7/6, Perf 14, SG #F84** *Photo* **\$300**  
 Cowan paper, Single NZ & Star watermark, l.h., very fresh, fine to very fine. Scott #AR39 \$1,500. SG £1,000  
 ..... Est. \$400/500



343 ★ **Life Insurance: 1905-06 Redrawn 2d, SG #L21** *Photo* **\$450**  
 Large part o.g., uncleared perf discs, centered for this, overall very fine, Brandon (1999) cert. Scott #OY17 \$2,750. SG £1,500 ..... Est. \$600/800



347 ★ **1913, 15/-, Perf 14½ x 14, SG #F122** *Photo* **\$240**  
 Cowan paper, Single NZ & Star watermark, o.g., fresh and fine, Sismondo (2009) cert. Scott #AR43 \$1,350. SG £900  
 ..... Est. \$300/350

*Postal-Fiscals*



348 ★ **1931, 35/- Orange Yellow, SG #F161** *Photo* **\$1,400**  
 Cowan paper, Single NZ & Star watermark, l.h., sharp color, fine to very fine and attractive, Sismondo (2014) cert. Scott #AR62 \$6,000. SG £5,000 ..... Est. \$2,000/2,500



344 ★ **1882, 7/6 Olive Gray, SG #F16** *Photo* **\$400**  
 N Z and Star Wide Apart watermark, full o.g. (h.r.), very deep color, fine to very fine and attractive. Scott #AR9 \$1,500. SG £1,100 ..... Est. \$500/700



349 ★ **1935, £3 10/- Rose, SG #F165** *Photo* **\$550**  
 Cowan paper, Single NZ & Star watermark, l.h., well centered, very fine. Scott #AR66 \$2,250. SG £2,000  
 ..... Est. \$800/1,000

345 ○ **1882 Watermark "NZ" 15/- to £20, #AR13/A30A** *Web* **\$50**  
 Fiscally used, missing a couple of values in that range of values, fresh, fine to very fine. Barefoot #247-250, 252-259, 261-264, 268 ..... Est. \$80/100

*Lot Description Start Bid Lot Description Start Bid*



350 ★ **1935, £4 10/- Deep Olive Gray, SG #F167** *Photo* \$425  
 Cowan paper, Single NZ & Star watermark, o.g., slight gum tone spots on reverse only, signed Perez. Scott #AR68 \$2,500. SG £1,800 ..... Est. \$600/800



351 ★★ **1952, £3 10/- Rose, SG #F209w** *Photo* \$700  
 Multiple NZ & Star watermark inverted, n.h., immaculate and very fine scarce, Ceremuga (2013) cert. Scott #AR92 var. \$2,250+. SG £3,500 ..... Est. \$1,000/1,300



352 ★ **Balance of Collection to 1940** *Photo* \$4,500  
 Sparse early but incl. SG#33, also #35, #38, #97, #126 (certs), also #122, 1874-78 issue on mostly complete per Scott, incl. Victoria Island, Antarctica, Semis, Dues complete, scattered early Officials incl. SG#O6, #O11-12 mint (certs), 1913 "O.P.S.O." separate lot in auction, complete 1907 Issue on per Scott, Life Insurance complete except 1891 set, #L21 (separate lots), Newspapers complete, strong Fiscals with 1882 issue complete per Scott, except SG#F16, #F84, #F122, #F161, #F165, #F167, #F209, few with certs., classics mostly 4 margined or centered group with excellent colors, 20th Century fine to very fine, very few condition issues, fabulous lot for expansion ..... Est. \$6,500/8,500

353 ★ **Niue Complete Collection to 1940, SG #1-78** *Web* \$300  
 L.h. to o.g., fresh, fine to very fine. Scott #1-76 \$1,300. SG £1,240 ..... Est. \$400/500

Nigeria



354 ★ **Lagos: 1879, Victoria, 1/- Orange, SG #16** *Photo* \$240  
 Large part o.g., owners mark on reverse, fresh color for this, fine to very fine. Scott #12 \$900. SG £950 ..... Est. \$300/400



355 ★ **Lagos: 1886, Victoria, 5/- Blue, SG #28** *Photo* \$200  
 O.g., centered, nice color for this issue, choice very fine, Brandon (1992) cert. Scott #35 \$700. SG £700 ..... Est. \$250/300



356 ★ **Lagos: 1886, Victoria, 10/- Purple Brown, SG #29** *Photo* \$450  
 Large part o.g., well centered, good color, choice very fine. Scott #37 \$1,700. SG £1,600 ..... Est. \$600/800

357 ★ **Lagos Balance of Collection to 1905** *Web* \$550  
 O.g. and complete except SG#16, #28-29 (separate lots), fresh throughout, fine to very fine. SG £3,100+ ..... Est. \$750/1,000

Lot Description Start Bid Lot Description Start Bid

*Niger Coast Protectorate*



358 ★ **1893 1/2d Surcharge Type 4 in Black on 2 1/2d Trial Surcharge, SG #15 var.** *Photo* \$1,000  
 Large part o.g., "vertical crease", BPA (1996) cert. Scott #26 var. 1 of 7 recorded ..... Est. \$1,500/2,000

*Additional note by Philip Kinns stating "ex W.K. Aikman, Governor of British Honduras(?), signed by him (in red), in ms.... similar to his signing of the 2 great Honduras rarities all which passed through his hands"*



359 ★ **1893, Old Calabar Provisional, 1/2d on 2 1/2d, Blue Black Surcharge, SG #16** *Photo* \$1,000  
 O.g., very fresh, fine to very fine, BPA (2001) cert. Scott #23 \$5,000. SG £4,750 *rare* ..... Est. \$1,500/2,000



360 ★ **1893, Old Calabar Provisional, 1/2d on 2 1/2d, Vermilion Surcharge, SG #31** *Photo* \$140  
 Full o.g., fresh and fine, Brandon (2007) cert. Scott #17 \$625. SG £600 ..... Est. \$200/250



361 ★ **1893, Old Calabar Provisional, 1/- on 2d, Vermilion Surcharge, SG #38** *Photo* \$180  
 L.h., very fresh copy, fine to very fine, *ex Rinkoff* Brandon (1988) cert. Scott #30 \$725. SG £750 ..... Est. \$250/300



362 ★ **1893, Old Calabar Provisional, 10/- on 5d, Vermilion Surcharge, SG #41** *Photo* \$1,300  
 O.g., slight gum hinge toning and "slight overall toning", several hs. on reverse, fine scarce, Brandon (2010) cert. Scott #33 \$6,750. SG £6,500 ..... Est. \$2,000/2,500



363 ★ **Balance of Collection** *Photo* \$1,100  
 O.g., starting 1892 issue complete, various 1893 surcharges incl. SG #9, #11, #13-14, #19-21, #27, #29, #33, #35, #37 (all with certs), Victoria sets complete, nice colors throughout, fine to very fine ..... Est. \$1,500/2,000



364 ★ **Northern Nigeria Complete Collection, SG #1-18, 20-52** *Photo* \$375  
 Except £25, l.h. to o.g., all with attractive colors, fine to very fine. Scott #1-18, 19-52 \$1,580. SG £1,150 .. Est. \$500/700



365 ★ **Southern Nigeria Complete, SG #1-56** *Photo* \$550  
 O.g., couple with minor gum toning, very fresh on face, overall very fine. Scott #1-56 \$1,933. SG £2,100 (cheapest shades) ..... Est. \$700/900

366 ★ **Nigeria Complete to 1951, SG #1-59, etc.** \$200  
 L.h. to o.g., few varieties up to 10/- (complete by Scott), fine to very fine. Scott #1-68 \$824. SG £700+ ..... Est. \$250/300

Lot Description Start Bid Lot Description Start Bid

*North Borneo*



367 ★ **1886 Perf 14 Small "3" on 4c, SG #18a** Photo \$200  
 O.g. (h.r.), small "gum thinning and perf defects", very fresh, fine appearance, Holcombe (1993) cert. Scott #20 var. SG £1,800, rare, variety occurs 3 times in setting of 50 ..... Est. \$300/400



368 ★ **1912 \$5 Type 66 Overprint, SG #184** Photo \$350  
 Toned o.g. (typical), short perf at top, well centered, fine, APS (2006) cert. Scott #158 \$1,500. SG £1,700 ..... Est. \$500/600



369 ★ **1925-28 Set of 18, SG #277-294** Photo \$300  
 L.h. to o.g., fresh set, fine to very fine set. Scott #167-184 \$1,068. SG £1,000 ..... Est. \$400/500



370 ★ **Balance of Collection to 1939** Photo \$3,000  
 Mostly complete, virtually all o.g. (SG#13 regummed), collection starting with SG#1, #3 (cert.), #8-13, #14-15, 1886 on mostly complete incl. sets cat. to £1000+, SG#147a, occasional gum tone spots but much cleaner than normally seen, Dues complete per Scott, high cat., fine to very fine overall ..... Est. \$4,000/5,000

*North Borneo-Labuan*



371 (★) **1879 CA Crown Watermark 2c Blue-Green, SG #1 var.** Photo \$300  
 Watermark sideways reverse, unused, well centered, excellent color, very fine and scarce, BPA (2008) cert. Scott #1 \$1,600. SG £1,600 ..... Est. \$400/500



372 ★ **1880-82 Watermark CC 6c Orange-Brown, SG #6a** Photo \$70  
 Variety "no dot at upper left", full o.g., rich color, very fine for this. Scott #6a \$275. SG £300 ..... Est. \$100/140



Lot Description Start Bid Lot Description Start Bid



373 ★ **1880-82 Watermark CC 8c Carmine, SG #7a** Photo \$70  
 Variety "no dot at lower left", large part o.g., rich color, overall very fine. Scott #7a \$250. SG £300 ..... Est. \$100/140



377 ★ **1893, 2c on 40c Ocher, Inverted Surcharge, SG #49a** Photo \$150  
 Full o.g., excellent color, choice very fine, PF (2001) cert. Scott #40a \$500. SG £450 ..... Est. \$200/250



374 ★ **1880-82 Watermark CC 12c Carmine, SG #9a** Photo \$140  
 Variety "no right foot to second Chinese character", large part o.g., fresh, fine to very fine for this. Scott #9a \$600. SG £600 ..... Est. \$200/300



378 ○ **1905, \$1 Blue Local Overprint, SG #139** Photo \$275  
 C.t.o. (as all), "a little toned at bottom", only seen on reverse, otherwise very fine scarce, BPA (2001) cert. Scott #120 \$1,050. SG £1,000 ..... Est. \$350/450



375 (★) **1880 Victoria "6" Surcharge Twice on 16c, SG #12** Photo \$750  
 Unused, very fresh, very fine scarce sound, Sismondo (2014) cert. Scott #11 \$3,500. SG £3,750 ..... Est. \$1,000/1,300



379 ★ **1905, \$2 Green Local Overprint, SG #140** Photo \$650  
 Large part o.g., very fresh for this, overall very fine, Royal (2007) cert. Scott #121 \$4,000. SG £3,250 ..... Est. \$1,000/1,200



376 (★) **1885 2c on 16c Blue, SG #24** Photo \$275  
 Large part o.g., well centered, immaculate and very fine, Royal (2002) cert. Scott #25 \$1,150. SG £950 ..... Est. \$350/450



380 ★ **Balance of Collection to 1904** Photo \$1,000  
 Virtually every issue represented incl. SG#2 (cert.), #4, few surcharges, 1883-86 Watermark CA to 40c complete except #18, 1892 on complete to 1904, Dues complete, few earlier no gum, later o.g. throughout, overall very fine ..... Est. \$1,500/2,000



381 ★ **Northern Rhodesia Complete to GVI Issue, SG #1-45** Web \$240  
 L.h. to o.g., plus Dues set, fine to very fine. Scott #1-45, J1-4 \$859. SG £888 ..... Est. \$300/350

Lot	Description	Start Bid	Lot	Description	Start Bid
-----	-------------	-----------	-----	-------------	-----------

## Nyasaland

British Central Africa

- 382 ★ **1891, "B.C.A." on Rhodesia £1 Deep Blue, SG #14** *Photo* \$300  
Full o.g., great color, fine to very fine. Scott #14 \$1,000. SG £1,100 ..... Est. \$400/500



- 383 ★ **1891, "B.C.A." on Rhodesia £2 Rose Red, SG #15** *Photo* \$250  
Marginal copy, full o.g. (small h.r.), with papermaker's watermark, centered right, deep rich color, fine and attractive, BPA (2007) cert. Scott #15 \$1,200. SG £1,200 ..... Est. \$350/400



- 384 ★ **1891, "B.C.A." on Rhodesia £5 Sage Green, SG #16** *Photo* \$500  
Full o.g., deep shade, fine, Brandon (1998) cert. Scott #16 \$2,250. SG £1,800 ..... Est. \$700/900



- 385 ★ **1891, "B.C.A." on Rhodesia £10 Brown, SG #17** *Photo* \$1,100  
Full o.g., rich color, virtually very fine, RPS (1963) cert. Scott #17 \$4,500. SG £4,250 ..... Est. \$1,500/2,000



- 386 ★ **1895, Arms of the Protectorate, £1 Black & Yellow Orange, SG #29** *Photo* \$300  
Unwatermarked, o.g. (h.r.), overall very fine. Scott #29 \$1,150. SG £1,100 ..... Est. \$400/600



- 387 ★ **1896, Arms of the Protectorate, £1 Black & Blue, SG #40** *Photo* \$350  
Crown CC watermark, full o.g. (slightly toned h.r.), well centered, overall very fine, Brandon (1977) cert. Scott #40 \$1,150. SG £1,100 ..... Est. \$450/600



- 388 ★ **1896, Arms of the Protectorate, £10 Black & Orange, SG #41** *Photo* \$3,000  
Crown CC watermark, full o.g., well centered, deep rich color, very fine to extremely fine, Sismondo (2012) cert. Scott #41 \$9,000. SG £9,500 ..... Est. \$4,000/5,000

Lot Description Start Bid Lot Description Start Bid



389 ★ **Balance of Collection** Photo \$1,500  
 L.h. to o.g., complete except 1st issue £ values separate lots, 1895 and 1896 to 5/-, 1897-1901 to £1, 1898 Setting SG56a only used, 1903-04 to £1, SG#68, #71, very fresh collection, overall very fine ..... Est. \$2,000/2,500



390 ★ **Nyasaland Protectorate: 1908 Set Edward VII, SG #72/81** Photo \$200  
 O.g., 4/-, 10/- gum tone spots on reverse, £1 slightly rubbed, fine overall, *only set we have seen with any kind of condition issues*. Scott #1-10 \$980. SG £900 ..... Est. \$200/250



391 ★★ **Nyasaland Protectorate: 1908, Edward VII, £10 Purple & Ultramarine, SG #82** Photo \$3,000  
 Marginal copy, n.h. but gum unevenly applied resulting in some gum spots, very slight rubbing, very well centered, excellent color, overall very fine. Scott #11 \$11,000+. SG £12,000+ ..... Est. \$4,000/5,000

392 ★ **Nyasaland Balance of Collection, SG #83-98, 100-143** Web \$220  
 Complete 1913 GV to 1938-44 GVI except SG#99 (separate lot), l.h. to o.g. (few with h.r.), fresh throughout, fine to very fine. Scott #12-23, 25-67 \$886. SG £875 ..... Est. \$300/350

393 ★ **Palestine Intact Collection to 1938** Web \$90  
 L.h. to o.g., unchecked for varieties, incl. Dues complete, all in complete sets, fine to very fine ..... Est. \$130/160

Rhodesia



394 ★ **1892, Arms, £5 Sage Green, SG #12** Photo \$500  
 Large part o.g., excellent color, fine to very fine for this. Scott #18 \$1,775. SG £1,600 ..... Est. \$700/900



395 (★) **1892, Arms, £10 Brown, SG #13** Photo \$450  
 Unused, very fresh, sound, fine, Holcombe (1988) cert. for block of 4. Scott #19 \$3,000. SG £2,750 ..... Est. \$600/800



396 ★ **1897, Arms, £2 Rosy Red, SG #74** Photo \$550  
 Large part o.g., fine to very fine and attractive, BPA (2000) cert. Scott #58 \$1,900. SG £1,800 ..... Est. \$750/950



397 ★ **1901, Arms, £5 Deep Blue, SG #92** Photo \$850  
 Full o.g., deep color, fine to very fine and attractive. Scott #74 \$3,750. SG £3,250 ..... Est. \$1,200/1,500

Lot Description Start Bid Lot Description Start Bid



398 ★ **1901, Arms, £10 Lilac, SG #93** Photo \$700  
 L.h., couple of perf irregularities (not mentioned in cert.), very fresh, centered, overall very fine, Richter (1997) cert. Scott #75 \$3,750. SG £3,250 ..... Est. \$1,000/1,200

399 ★ **1912, "Rhodesia" on £2 Rosy Brown, SG #113d** Photo \$800  
 O.g., minor "horiz. crease", fresh, fine for this, BPA (2008) cert. Scott #100 \$4,500. SG £3,750 ..... Est. \$1,200/1,500



402 ★ **Balance of Collection to 1919** Photo \$1,000  
 O.g. throughout, starting 1892-93 issue to £2, mostly complete after that with scattered certs (except SG#74, #93-separate lots), fine to very fine ..... Est. \$1,500/2,000



403 (★) **St. Helena: 1861, Victoria, 6d Clean-Cut Perf 14 to 16, SG #2** Photo \$300  
 Watermarked Large Star, unused, very well centered, very fine. Scott #2 \$2,100. SG £1,700 ..... Est. \$400/600



400 ★ **1910-13 Double Head Set, SG #119/165** Photo \$1,400  
 O.g., set incl. 1/2d bronze green, 3/- "gash in ear", 7/6 SG#161 cat. £900; 10/- #164, £1 #165; excellent colors, fine to very fine, £1 APS (2008) cert. Scott #101-118 \$4,640+. SG £4,600+ ..... Est. \$1,800/2,000



404 ★ **St. Helena: 1922, GV, 15/- Gray & Purple, SG #113** Photo \$300  
 Watermarked Multiple Script CA, l.h. (small hinge remnant), almost very fine. Scott #94 \$1,075. SG £1,000 ..... Est. \$400/500



401 ★ **1913-22 Perf 14 Admiral Set, SG #186/243** Photo \$375  
 L.h. to o.g., basic set but incl. 3d, 4d, 5d, 6d Die I (cat. £250), 1/- Die II., £1 SG#243, rich colors, overall very fine. Scott #119-138 \$1,440+ ..... Est. \$500/700



405 ★ **St. Helena Virtually Complete to 1949 GVI** Photo \$1,700  
 Per Scott, l.h. to o.g., starting SG#1 (part o.g., 4 margins), missing only SG#2, #113 (separate lots), excellent colors in the 19th Century, fine to very fine for this . Est. \$2,500/3,000

Lot Description Start Bid Lot Description Start Bid

**ONE OF ABOUT 5 MINT KNOWN**



406 ★ **St Kitts-Nevis: St. Christopher; 1888, Victoria, 1d on 2½d Without Bar, SG #27** Photo **\$10,000**  
 L.h., bright fresh color, one of the finest known, RPS (1963) cert. Scott #23 \$31,500. SG £21,000 ..... Est. \$15,000/20,000

*One of the rarest stamps of British West Indies, produced when one sheet of twenty 2½p stamps were surcharged with the first setting of the 1p. Most of the few remaining are used. Of the 5 mint, one is regummed. Ex "World Traveler" sale, where it realized \$19,000*



407 (★) **St. Kitts-Nevis: Nevis; 1883, Victoria, ½d on Half of 1d, Unsevered Pair, SG #36b** Photo **\$1,400**  
 Unused, sound, fine to very fine and rare, BPA (1979) cert. Scott #31b \$6,500. SG £6,000 ..... Est. \$2,000/2,500

409 ★ **St. Kitts-Nevis Complete Collection to GVI, SG #1-77f** Photo **\$550**  
 L.h. to o.g., complete per Scott, incl. GVI Perf 13½ by 11, fine to very fine. Scott #1-90 \$2,258. SG £2,000 ..... Est. \$750/1,000



408 ★ **Balance of St. Christopher & Nevis Collection** Photo **\$1,000**  
 Nevis with SG#14 (unused-cert.), #5a, #6a, St. Christopher complete per Scott except #27 (separate lot), no Revenues, good colors for these early issues, fine to very fine ..... Est. \$1,500/2,000

410 ★ **St. Lucia: 1863, Victoria, Unissued 6d Indigo, SG #10** Photo **\$300**  
 Crown CC watermark, full o.g., fresh, decent centering for the issue, fine to very fine, Brandon (1983) cert. Scott #26 \$1,500. SG £1,100 ..... Est. \$400/600

Lot Description Start Bid Lot Description Start Bid



411 ★ **St. Lucia Virtually Intact Collection to GVI** *Photo* **\$1,000**  
 O.g. throughout, complete per Scott except SG#26 (separate lot), 19th Century with exquisite colors, all Dues, mostly fine to very fine ..... Est. \$1,500/2,000



415 ○ **1881, Local Surcharge, 4d on 1/- Bright Vermilion, SG #35** *Photo* **\$240**  
 Small Star watermark, lightly canc'd., fresh, fine to very fine, one of the handful in the collection used . Scott #33 \$975. SG £800 ..... Est. \$300/400

*St. Vincent*



412 ★ **1872, Victoria, 6d Deep Blue Green, Perf About 15, SG #19b** *Photo* **\$375**  
 Small Star watermark, full o.g., centered right, deep color, fine for this, Sismondo (2005) cert. Scott #14B \$1,800. SG £1,500 ..... Est. \$500/700



416 ★ **1881, Victoria, 4d Bright Blue, Perf 11-12½, SG #38** *Photo* **\$300**  
 Small Star watermark, large part o.g. (h.r.), toned gum spot resulting in one toned perf on face, fine to very fine for this. Scott #27 \$1,600. SG £1,200 ..... Est. \$400/500



417 ★ **1885, Victoria, 4d Red Brown, SG #50** *Photo* **\$450**  
 Crown CA watermark, "dist. o.g." (a little severe in our opinion), well centered, attractive color, very fine and attractive, PF (1990) cert. Scott #47 \$1,500. SG £950 ..... Est. \$600/800



413 ★ **1873, Victoria, 1/- Lilac Rose, Perf 11-12½ x 14 to 16, SG #20** *Photo* **\$1,100**  
 Small Star watermark, full o.g., "small mark at lower right", fresh copy of this very difficult stamp, fine, BPA (2005) cert. Scott #22 \$6,600. SG £5,500 ..... Est. \$1,500/2,000



414 ★ **1880, Victoria, 1/- Bright Vermilion, Perf 11-12½, SG #31** *Photo* **\$230**  
 Small Star watermark, full o.g. (h.r.), incredible color, usual centering, fine or better, BPA (2008) cert. Scott #28A \$900. SG £800 ..... Est. \$300/400



418 ★ **Balance of Collection to GVI** *Photo* **\$2,000**  
 Classics mostly complete, with many values cat. up to few hundred £'s, incl. SG#6, #16, #28, #34 (certs), also #28, #32 (no gum), #124a, 1890-93 issue on complete per Scott, classics again showing unusual freshness, fine to very fine overall excellent lot ..... Est. \$2,500/3,500

*Lot Description Start Bid Lot Description Start Bid*

Samoa



419 (★) **1914, G.R.I. "1 Shillings" on German Samoa 1m, SG #110** *Photo* **\$500**  
 Unused, fresh color, fine or better, BPA (1938) cert. Scott #110 \$3,500. SG £3,250 *scarce*, ..... Est. \$700/900



420 ★ **1914, G.R.I. 2/- on German Samoa 2m, SG #112** *Photo* **\$850**  
 O.g., "printed from original type", nice shade, almost very fine, various signatures, BPA (1988) cert. Scott #111 \$4,000. SG £3,500 ..... Est. \$1,200/1,500



421 ★ **1914, G.R.I. 3/- on German Samoa 3m, SG #113** *Photo* **\$450**  
 Full o.g. marginal copy, deep rich shade, fine to very fine, BPA (2005) cert. Scott #112 \$1,600. SG £1,400 ..... Est. \$600/800



422 ★ **1914, G.R.I. 5/- on German Samoa 5m, SG #114** *Photo* **\$275**  
 O.g., very fresh color, fine, signed Bloch, APS (1980) cert. Scott #113 \$1,200. SG £1,200 ..... Est. \$400/500



423 ★ **1932, "Samoa." on New Zealand £5 Postal Fiscal, SG #176** *Photo* **\$550**  
 O.g., deep color, *ex "Trillium"*, signed Champion, Brandon (1995) cert. Scott #161 \$2,600. SG £2,500 . Est. \$800/1,000



424 ★ **Balance to 1940** *Photo* **\$500**  
 5 copies to 2/- of "Express" issues, 1895 Palms perf 11 set complete, scattered until 1914 "G.R.I." set to 9d on 80pf, later issues complete except SG#176 (separate lot) ..... Est. \$700/900

425 ★ **Sarawak Intact Collection to 1941** *Web* **\$250**  
 L.h. to o.g., mostly complete sets per Scott incl. 1888-97 set, fresh throughout, fine to very fine ..... Est. \$350/450

426 ★ **Seychelles Complete to 1941, SG #1-149** *Web* **\$550**  
 L.h. to o.g., missing SG#144b, fine to very fine. Scott #1-145a \$2,125 (approx). SG £2,130 ..... Est. \$700/900

Sierra Leone



427 ★ **1883, Victoria, 4d Blue, SG #26** *Photo* **\$300**  
 Crown CA watermark, full o.g., very fresh, fine and attractive, signed, Sismondo (2014) cert. Scott #29 \$1,000. SG £1,000 ..... Est. \$400/500

Lot Description Start Bid Lot Description Start Bid



428 ★ **1897, "Postage and Revenue" and 2 1/2d on 2/-, SG #67** *Photo* \$700  
 Full o.g., fresh for this, fine and attractive, *most copies badly washed out and with no gum from the stock falling into the sea* Holcombe (1996) cert., signed Champion. Scott #60 \$4,000. SG £2,000 ..... Est. \$1,000/1,400



432 ★ **1933 Wilberforce Set, SG #168-180** *Photo* \$300  
 O.g., fine to very fine. Scott #153-165 \$1,069. SG £1,000 ..... Est. \$400/500



429 ★ **1912, GV, £2 Blue & Dull Purple, SG #129** *Photo* \$275  
 MCA watermark, o.g., centered, very fine and choice. Scott #120 \$850. SG £900 ..... Est. \$350/400

430 ★ **1912, GV, £5 Orange & Green, SG #130** *Photo* \$700  
 MCA watermark, l.h., fine, Ceremuga (2013) cert. Scott #121 \$2,750. SG £3,000 ..... Est. \$1,000/1,300



433 ★ **Balance to 1944 GVI** *Photo* \$1,800  
 Mostly complete starting 1859-74 issue complete, SG#1 thin, couple earlies possibly regummed, 14 (cert.), scattered certs throughout, incl. #66, #66b (no gum usual water soiling), pair #63, also #64 (regummed?), 20th Century complete except #129-130, #148, 1933 Wilberforce set, very fresh colors for this difficult country, fine to very fine ..... Est. \$2,500/3,000



431 ★★ **1923, GV, £5 Orange & Green, SG #148** *Photo* \$1,100  
 Multiple Script CA watermark, n.h., control # corner copy, beautiful copy, extremely fine and choice, Sismondo (2014) cert. Scott #139 \$2,250. SG £2,500 ..... Est. \$1,500/2,000

434 ★ **Somaliland Protectorate Complete to 1938 GVI, SG #1-104, O1-15** *Web* \$700  
 L.h. to o.g., incl. Officials complete, fresh throughout, fine to very fine. Scott #1-95, O1-16 \$2,496. SG £2,284 ..... Est. \$1,000/1,300



Lot Description Start Bid Lot Description Start Bid

South African States

Cape of Good Hope

One of the Finest Available Unused Examples



435 (★) **1853 "Triangular", Perkins Bacon, 4d Deep Blue on Deeply Blued Paper, SG #2** *Photo* \$350  
 Unused, margins to touching at bottom and right, fresh, fine overall, Sismondo (2009) cert. Scott #2a \$3,500. SG £3,000 ..... Est. \$500/700



438 (★) **1861 "Wood Block", 1d Vermilion, SG #13** *Photo* \$6,000  
 Unused, enormously rare sound and a choice unused example, sound condition where few are ever found, completely without any of the flaws that plague these issues, nice balanced margins all around and wonderfully fresh color, very fine in every respect, RPS (1983) cert. as "brick red". Scott #7 \$16,500. SG £17,000 ..... Est. \$8,000/10,000

*Ex Gross, "Bonaventure", Indusophen. Realized \$12,925 in 2011 auction.*



436 (★) **1858 "Triangular", Perkins Bacon, 6d Slate Purple on Blued Paper, SG #7d** *Photo* \$550  
 Regummed, good to large margins all round, excellent color, overall very fine, BPA (1990) cert. Scott #5c \$4,150. SG £4,000 ..... Est. \$800/1,000



439 ★ **1863-64 "Triangular", De La Rue, 1/- Bright Emerald Green, SG #21** *Photo* \$140  
 Full o.g., excellent color, nice margins all round, very fine for the issue. Scott #15 \$475. SG £550 ..... Est. \$200/250



437 (★) **1858 "Triangular", Perkins Bacon, 1/- Bright Yellow Green, SG #8** *Photo* \$700  
 Unused, good to large margins all round, intense color and excellent impression, immaculate and very fine, *ex Gross, "Bonaventure", Indusophen* BPA (1993) cert. Scott #6 \$3,250. SG £3,500 ..... Est. \$1,000/1,400



440 ★ **1874, "Hope Seated" 1d on 6d Deep Lilac, SG #32** *Photo* \$150  
 Full o.g., fine or better. Scott #21 \$650. SG £750 ..... Est. \$200/250

Lot Description Start Bid Lot Description Start Bid



- 441 ★ **1883, "Hope Seated" 5/- Orange, SG #45** *Photo* **\$220**  
Full o.g., rich color, fine. Scott #38 \$950. SG £950  
..... Est. \$300/400



- 442 ★ **1882, "Hope Seated" 1/2d on 3d Deep Claret, SG #46** *Photo* **\$2,500**  
Crown CC watermark, full o.g. (h.r.), strong color, very fine to extremely fine, *ex Rinkoff, Ferrari, Brandon* (1997) cert. Scott #39 \$7,000. SG £4,500 ..... Est. \$3,500/4,000

*Reportedly only one of two copies with original gum.*



- 443 ★ **Balance of Collection to 1903** *Photo* **\$1,400**  
Starting with triangles no gum with SG# 5ab (cert., unused appearance), 5a (cert.), De La Rue to 6d, 1864-65 on mostly complete, all o.g., very fresh throughout, fine to very fine overall ..... Est. \$2,000/2,500



- 445 ★ **1900 Bechuanaland 6d on 3d, SG #9** *Photo* **\$1,500**  
Pos 3, large part o.g., "horizontal crease" (minor in our opinion), very well centered for this, excellent color, very fine for the issue, *ex "Sovereign"*, BPA (2008) cert., signed Bloch. Scott #170 \$6,500. SG £7,500, *very scarce*  
..... Est. \$2,000/2,500



- 446 ★ **1900 Bechuanaland 6d on 3d, SG #10** *Photo* **\$140**  
O.g., pos. 2 in setting of 6, early printing, very fresh, very fine for this, Sisondo (2008) cert. Scott #171 \$475. SG £550  
..... Est. \$200/250



- 447 ★ **1900 Bechuanaland 1/- on 4d, SG #11** *Photo* **\$350**  
O.g., pos. 2, centered, fresh, fine to very fine for this, BPA (2000) cert. Scott #172 \$1,650. SG £1,600 .... Est. \$500/700

### Cape of Good Hope-Mafeking



- 444 ★ **1900 Bechuanaland 6d on 2d, SG #8** *Photo* **\$700**  
Full o.g., very fine for the issue scarce, BPA (1990) cert. Scott #169 \$2,500. SG £3,000 ..... Est. \$1,000/1,300



- 448 ★ **1900 3d on 1d, SG #12** *Photo* **\$250**  
O.g., sharp impression, fine, signed. Scott #173 \$1,050. SG £1,100 ..... Est. \$350/400

Lot Description Start Bid Lot Description Start Bid



449 ★ **1900 Bechuanaland 6d on 2d, SG #13** Photo \$350  
 O.g., fine to very fine, Brandon (2005) cert. Scott #174 \$1,300. SG £1,600 ..... Est. \$500/700



453 ★ **1900 Baden-Powell 1d Deep Blue, 21mm Wide, SG #22** Photo \$3,750  
 Dist. part o.g. (h.r.), well centered, very fresh, very fine for this rare mint, Sismondo (2012) cert. Scott #180a \$12,000. SG £14,000 ..... Est. \$5,000/6,500



450 ★ **1900 Bechuanaland 1/- on 6d, SG #14** Photo \$1,400  
 L.h., small corner crease not mentioned in cert., fine to very fine, Rendon (1995) cert. Scott #175 \$7,250. SG £7,500 *very scarce mint* ..... Est. \$2,000/2,500

454 ★ **Balance of 1900 Issues** Web \$220  
 3 items consisting of SG#1 (cert.), #2, #6 (cert.-small corner crease), fine to very fine and attractive. Scott #162-163, 167 \$875. SG £1,025 ..... Est. \$300/400



455 ★ **Vryburg: 1899, 1/2d on 1/2d, 1d on 1d, SG #1-2** Photo \$100  
 O.g. to part o.g., very fresh, fine to very fine. Scott #N1-2 \$515. SG £475 ..... Est. \$150/200



451 ★ **1900 Goodyear 1d Blue, SG #18** Photo \$300  
 O.g., pencil notations on reverse, centered, overall very fine, signed Bloch, BPA (2010) cert. Scott #178 \$1,100. SG £1,200 ..... Est. \$400/600



456 ★ **Vryburg: 1899, 2d on 6d Mauve, SG #3** Photo \$700  
 Full o.g., excellent deep color, well centered, extremely fine, Brandon (1986) cert. Scott #N3 \$2,500. SG £2,000 ..... Est. \$1,000/1,300



452 ★ **1900 Baden-Powell 1d Pale Blue, 18 1/2mm Wide, SG #19** Photo \$350  
 O.g., slight gum tone spots not mentioned in cert., fine to very fine, Friedl (1967) cert. Scott #179 \$1,400. SG £1,700 ..... Est. \$500/700



457 ★ **Vryburg: 1899, 2 1/2d on 2 1/2d Blue, SG #4** Photo \$450  
 O.g., very fresh, well centered, very fine, signed Champion, Friedl (1983) cert. Scott #N4 \$2,000. SG £1,750 ..... Est. \$600/800

Lot	Description	Start Bid	Lot	Description	Start Bid
-----	-------------	-----------	-----	-------------	-----------

## Natal



458 ○ **1859, Embossed, 1d Blue, SG #1** *Photo* **\$230**  
Used, apparent small margins all round, sound, fine, *only comes used* APS (1977) cert. Scott #5 \$1,400. SG £1,200  
..... Est. \$300/400

462 ★ **1902, Edward VII, £5 Mauve & Black, SG #144** *Photo* **\$700**  
Crown CC watermark, l.h., centered right, good color, fine. Scott #98 \$4,500. SG £5,000 ..... Est. \$1,000/1,400

459 ○ **1859, Embossed, 1d Rose, SG #2** *Photo* **\$400**  
"2" single barred oval cancel of Durban, nice margins all round, good impression, very fine, *only comes used* 4 signatures, Brun (2012) cert. Scott #6 \$2,200. SG £1,900  
..... Est. \$600/800



460 ○ **1857, Embossed, 9d Blue, SG #6** *Photo* **\$2,500**  
Unwatermarked, full margins all round, crisp embossing, two certs (PF 2008 stating mint with small gum stains), RPS (2009 stating used), in our opinion it leans towards the PF judgment that it is mint, as the black marks are indicative of gum soaks, 1st issue typically canceled by small cds with crown or manuscript, handsome very fine appearance, PF (2008), RPS (2009) certs. Scott #3 \$13,000. SG £7,500, *only one other copy known mint, rare sound in either case*  
..... Est. \$3,000/4,000

463 ★ **1908, Edward VII, £1 10/- Brown Orange & Deep Purple, SG #162** *Photo* **\$450**  
MCA watermark, o.g. sheet margin copy, excellent sharp impression on white gum, very fine, *ex "Trillium"*, signed A. Diena. Scott #109 \$1,700. SG £2,750 ..... Est. \$600/800



461 ○ **1857, Embossed, 1/- Buff, SG #7** *Photo* **\$1,400**  
"2" single barred oval cancel of Durban, nice margins all round, no faults, about as nice as it gets, *only comes used* signed, Sismondo (2009) cert. Scott #4 \$10,500. SG £5,500  
..... Est. \$2,000/2,500



464 ★ **Balance of Collection to 1909** *Photo* **\$1,200**  
Starting SG#4 used (cert-vf), then o.g. 1860 Britannia scattered types on, 1880 on complete except high £ values, Officials complete, excellent colors throughout the collection incl. nice margins on the imperfs, fine to very fine  
..... Est. \$1,600/2,000

Lot Description Start Bid Lot Description Start Bid



465 ★ **Orange Free State: Occupation; 1900 VRI "Raised Stops" 1/- Orange-Yellow, SG #121a** Photo \$400  
Full o.g. (minute h.r.), excellent color, fine, RPS (1953) cert. Scott #52j \$1,500. SG £1,300, *very rare* ..... Est. \$600/800

466 ★ **Orange Free State Balance of British Occupation** Web \$275  
1900 to 1908 complete per Scott except 1/- values, SG#102a (cert.), o.g., fine to very fine ..... Est. \$350/450



467 ★ **Transvaal: 1902-03 Issues, SG #244-258** Photo \$180  
Complete l.h. to o.g. except £5, fresh and fine to very fine. Scott #252-266 \$608. SG £608 ..... Est. \$240/275



468 ★ **Transvaal: 1904-09, 1905-09, Postage Due 1907 Sets, SG #260-276, D1-7** Photo \$140  
Complete l.h. to o.g., fine to very fine lot. Scott #268-284, J1-7 \$703. SG £567 ..... Est. \$200/300



469 ★ **Zululand: 1888-93, "Zululand" on G.B., 1/2d-5/- Complete, SG #1/11** Photo \$550  
Set of 11, l.h. (5/-) to o.g. (h.r.), fine to very fine set. Scott #1-11 \$1,255. SG £1,100 ..... Est. \$800/1,000



470 ★ **Zululand: 1894, Victoria 1/2d-£1, SG #20/28** Photo \$230  
Set of 8, o.g. (h.r.), £1 large h.r., fresh and fine to very fine. Scott #15-23 \$950. SG £850 ..... Est. \$300/350



471 ★ **Zululand: 1894, Victoria, £5 Purple & Black, SG #29** Photo \$1,400  
Full o.g., fresh and fine to very fine, BPA (2003) cert. Scott #24 \$5,750. SG £5,000 ..... Est. \$2,000/2,500

472 ★ **Zululand 1888 to 1893 Group of 3, SG #12, 16, F1** Web \$30  
O.g., with Postal Fiscal 1d, fresh and fine to very fine. Scott #12-14 \$100. SG £123 ..... Est. \$40/50



473 ★ **South Africa Complete Intact to 1938** Photo \$1,000  
Per Scott, l.h. to o.g., incl. Semis, Airs, Dues, Officials complete, incl. SG#64aw, few of the coils, fine to very fine ..... Est. \$1,400/1,800

474 ★ **Southern Rhodesia Complete to 1940, SG #1-60** Web \$110  
O.g., fresh throughout, missing only SG#35b, overall very fine. Scott #1-63 \$510. SG £479 ..... Est. \$160/200



475 ★ **South West Africa: 1923, Setting I Overprints GV Set, SG #1/12** Photo \$600  
Set of 12, l.h. to o.g. (5/- h.r.), excellent colors, fine to very fine. Scott #1-12 \$2,681. SG £2,250 ..... Est. \$800/1,000

Lot Description Start Bid Lot Description Start Bid



476 ★ **South West Africa: 1923, Setting II Overprints GV Set, SG #13/15** Photo \$400  
 Set of 3, l.h. to o.g., rich colors, fine to very fine. Scott #13-15 \$1,885. SG £1,500 ..... Est. \$600/800



477 ★ **South West Africa: 1923-26, Setting III Overprints Set, SG #16/27, 28** Photo \$220  
 Set of 12, o.g. (few h.r.), also 2/6 setting IV, rich colors, fine to very fine set. Scott #16-27, 28 \$855. SG £740 ..... Est. \$300/400



478 ★ **South West Africa Balance of Collection to 1938** Photo \$400  
 1924 Setting VI on complete incl. Airs, Dues except SG#D13, #17a, incl. Officials complete, very fine overall ..... Est. \$600/800



479 ★ **Sudan: Army Official; 1906-11 10pi, SG #A13** Photo \$220  
 Watermark Multiple Crescent & Star, o.g., very fine and attractive, BPA (1980) cert. Scott #MO12 \$625. SG £550 ..... Est. \$300/400

480 ★ **Sudan Balance of Collection to 1941** Web \$400  
 L.h. to o.g., complete incl. Airs, Dues, scattered Army Officials and Officials with no perforated overprints, fine to very fine ..... Est. \$600/800

481 ★ **Swaziland Intact Collection to 1938** Web \$90  
 L.h. to o.g., complete except SG#9, 1st issue no certs or signatures, fine to very fine ..... Est. \$140/180

Tanganyika

Mafia Island



482 ★ **1915 2 1/2 Blackish Lilac Overprint, SG #M1A** Photo \$200  
 O.g., well centered, "small surface blemish", fine, BPA (2007) cert. Scott #NL9 \$1,200. SG £950, extremely rare ..... Est. \$300/400



483 ★ **1915 4h Black Overprint, SG #M2A** Photo \$275  
 O.g., centered, choice very fine. Scott #NL10 \$1,050. SG £900, extremely rare ..... Est. \$350/400



484 ★ **1915 7 1/2 Black Overprint, SG #M3A** Photo \$140  
 O.g. (h.r.), signed on reverse, very fresh and fine. Scott #NL11 \$625. SG £550, scarce, only 20-30 issued ..... Est. \$200/250

Lot Description Start Bid Lot Description Start Bid



485 ★ **1915 7½h Purple Overprint, SG #M3B** Photo \$240  
 L.h., centered, very fine, Ceremuga (2004) cert. Scott #NL20 \$825. SG £650, *scarce, only 20-30 issued* ..... Est. \$300/350



490 ★ **1915 30h Purple Overprint, SG #M6B** Photo \$400  
 O.g. (h.r.), few ink spots on reverse, nice color, fine and rare. Scott #NL23 \$1,650. SG £1,200, *very rare* ... Est. \$600/800



486 ★ **1915 15h Black Overprint, SG #M4A** Photo \$150  
 Full o.g., well centered, rich color, immaculate and very fine. Scott #NL12 \$675. SG £550, *scarce, only 20-30 issued* ..... Est. \$200/250



491 ★★ **1915 45h Black Overprint, SG #M7A** Photo \$275  
 N.h. (per Briefmarkenprüfstelle cert.), short perf bottom left (not mentioned in certs.), rich color, fine, BPA (1981), Briefmarkenprüfstelle (2003) certs. Scott #NL15 \$1,100+. SG £950 +, *extremely rare* ..... Est. \$350/400

487 ★ **1915 15h Purple Overprint, SG #M4B** Photo \$300  
 Very l.h., well centered, lovely copy, extremely fine, *ex Lobdell*, BPA (1995) cert. Scott #NL21 \$1,050. SG £850, *scarce, only 20-30 issued* ..... Est. \$400/500



492 ★ **1915 45h Purple Overprint, SG #M7B** Photo \$375  
 O.g. pl. # single, fine and attractive, signed Gibbs, Holcombe (1991) cert. Scott #NL24 \$1,650+ SG £1,200+ *rare* ..... Est. \$500/600



488 ★ **1915 20h Black Overprint, SG #M5A** Photo \$275  
 L.h., centered, immaculate and very fine, Brandon (2008) cert. Scott #NL13 \$975. SG £850, *extremely rare* ..... Est. \$350/400



489 ★ **1915 30h Black Overprint, SG #M6A** Photo \$275  
 O.g., hs. on reverse, well centered, fresh and very fine. Scott #NL14 \$1,100. SG £900, *scarce, only 20-30 issued* ..... Est. \$350/400



493 ★ **1915 Set to 45h Reddish Violet Overprint, SG #MIC-7C** Photo \$700  
 L.h. to o.g., 2½h control # copy, all very fresh, fine to very fine set, 30h, 45h signed Hoffman, etc., Brandon (2008) certs. for all. Scott #NL25-31 \$2,875. SG £2,095 ..... Est. \$1,000/1,400

Lot Description Start Bid Lot Description Start Bid



494 ★ **1915 (Sept) G.E.A. Fiscal 50h Handstamp, SG #M24** Photo \$275  
 Full o.g., "small corner crease", well centered, sharp copy, very fine or better appearance, BPA (2012) cert. Scott #NL57 \$1,200. SG £950 ..... Est. \$350/450



498 ★ **Tanganyika: 1917-21 GEA 50r, SG #62** Photo \$180  
 L.h., fresh, fine to very fine. Scott #N122 \$600. SG £650 ..... Est. \$240/275



495 ★ **1915 (Sept) G.E.A. Fee 50h Handstamp, SG #M26** Photo \$250  
 L.h., trace of tone spot on reverse only, centered, very fine or better appearance. Scott #NL59 \$1,200. SG £950 ..... Est. \$350/450



499 ★ **Tanganyika Balance of Collection to 1931** Photo \$400  
 L.h. to o.g. (SG#86 slight gum toning), starting with "NF" overprints complete, with G.E.A. complete except 50r (separate lot), etc., Scott listed under German East Africa for early sets. Scott \$1,672. SG £1,400+ ..... Est. \$600/800



496 ★ **1915-16 Overprint Set of 10, SG #M33-42** Photo \$600  
 L.h. to o.g., usual toned gum, fine to very fine lot, Gibbs (2008) cert. Scott #NL79-88 \$2,387. SG £1,800 ..... Est. \$800/1,000



500 ★ **Togo: 1914, "Anglo-French Occupation" on German Togo, 2nd (Narrow) Setting, 5pf, SG #H15** Photo \$375  
 L.h., slightly short perf at top, very well centered, rich color, very fine and scarce, BPA (1965) cert. for pair, Holcombe (later undated) cert. Scott #49 \$1,400. SG £1,500, only 40 printed, about a third mint ..... Est. \$500/700



501 ★ **Togo: 1915, "Anglo-French Occupation" on German Togo, 3rd Setting, 20pf, SG #H32** Photo \$450  
 O.g., sharp impression, very fine, signed Champion, Calves, Brandon (1997) cert. Scott #64 \$1,600. SG £1,400 ..... Est. \$600/800

497 ★ **1917 Overprint Set of 10, SG #M43-52** Photo \$850  
 Usual toned l.h. to o.g., 1r marginal, fine to very fine lot, ex Lobdell, all signed, 1r BPA (1966) cert. Scott #NL89-99 \$4,475. SG £2,500 ..... Est. \$1,200/1,500

502 ★ **Togo Balance of Collection to 1916** Web \$450  
 L.h. to o.g. with wide setting to 80pf, Gold Coast overprint sets complete, fine to very fine. Scott \$2,320. SG £2,071 ..... Est. \$600/800



Lot Description Start Bid Lot Description Start Bid



503 ★ **Tonga Complete to 1938** Photo \$550  
 L.h. to o.g., excellent colors in early period, fine to very fine.  
 Scott # 1-72, O1-10 \$2,986. SG £2,700 ..... Est. \$750/900

*Trinidad & Tobago*



504 (★) **Trinidad: 1854, "Britannia" Engraved (1d) Rose Red, Imperf, White Paper, SG #12** Photo \$450  
 Unused, large margins all round, "surface scrape" (very difficult to locate), fresh, very fine or better appearance, BPA (2008) cert. Scott #6 \$3,250. SG £2,500 ..... Est. \$600/800



505 (★) **Trinidad: 1859, "Britannia" Engraved, 6d Deep Green, Imperf, SG #28** Photo \$2,400  
 Unused, marginal copy with large margins to touching at bottom right, excellent color, fine for this, BPA (1953) cert. Scott #16 \$15,000. SG £12,000 ..... Est. \$3,000/4,000



506 ★ **Trinidad: 1859, "Britannia" (1d) Rose Red, Pin-Perf 12½, SG #31** Photo \$450  
 Full o.g., excellent color, usual centering, fine for the issue. Scott #18 \$2,000. SG £1,600 ..... Est. \$600/800



507 ★ **Trinidad Balance of Collection** Photo \$1,500  
 Britannia issues with many o.g., very fresh with some imperf 4 margin copies, incl. SG #38, #50, #55, #58 (certs), many items cat. to hundreds of £'s each, 1883-94 issue on complete per Scott, fine to very fine overall ..... Est. \$2,000/2,500



508 ★ **Tobago Intact Collection to 1896** Photo \$500  
 Virtually o.g. throughout, complete except SG #6-7 for completion, #5 pen cancel removed, very attractive, fresh and fine to very fine ..... Est. \$800/1,000

509 ★ **Trinidad & Tobago Complete to 1938 GVI** Web \$450  
 Per Scott, l.h. to o.g., incl. 1st issue white backs, all Dues incl. 1947-61 set (incl. those listed under Trinidad in Scott), Officials, Semis, War Tax, fine to very fine lot. Scott # 1-61, B1-3, J1-8, etc. \$2,300. SG £2,200 ..... Est. \$600/800

**Turks & Caicos Islands**

*Turks Islands*



510 ★ **1879, Victoria, 1d Dull Red, Throat Flaw, SG #5b** Photo \$70  
 Full o.g., fresh, fine to very fine. Scott #5 var. SG £250 ..... Est. \$100/130



511 ★ **1873, Victoria, 1/- Lilac, SG #6** Photo \$1,000  
 Full o.g., nice color, completely sound, fine and rare, ex "Sovereign", PF (1977), BPA (2008) certs. Scott #6 \$5,750. SG £5,000 ..... Est. \$1,500/2,000

*One of very few sound original gum examples extant.*

*Lot*      *Description*      *Start Bid*      *Lot*      *Description*      *Start Bid*



512 (★) **1881, Victoria, 2½d on 1/- Lilac, Type 17, SG #27** *Photo* **\$700**  
 Unused, setting 3, very nice color for this, centered for the issue, faint natural paper wrinkle (not mentioned in certs), very scarce, overall very fine, *ex "Sovereign"*, PF (1963), BPA (2008) certs. Scott #20 \$2,600. SG £4,000  
 ..... Est. \$1,000/1,400



516 ★ **1881, Victoria, 4d on 1/- Lilac, Type 30, SG #46** *Photo* **\$550**  
 Large part o.g. (h.r., slight gum toning), well centered, fine to very fine example, scarce, *ex "Sovereign"*, 1987 (RPS) cert. Scott #39 \$2,750. SG £2,500 ..... Est. \$800/1,000



513 (★) **1881, Victoria, 2½d on 1/- Lilac, Type 24, SG #37** *Photo* **\$300**  
 Unused, very fresh, fine to very fine for this, Bloch (1974) cert. Scott #32 \$1,350. SG £1,200 ..... Est. \$400/500



517 ★ **1881, Victoria, 4d on 1d Dull Red, Type 28, SG #48** *Photo* **\$250**  
 Dist. o.g. (h.r.), nice marginal copy, fine to very fine for this, Friedl (1974) cert. Scott #36 \$950. SG £850 . Est. \$300/400



514 (★) **1881, Victoria, 2½d on 1/- Dull Blue, Type 25, SG #38** *Photo* **\$300**  
 Unused, setting 9, sharp impression, fine for the issue, *ex Gross*, signed Bloch. Scott #26 \$1,500. SG £1,100  
 ..... Est. \$400/600



518 ★ **Balance of Collection** *Photo* **\$900**  
 Many o.g. on earlier period, incl. SG #13, #24, #26, #29, #34, #44-45, 1881 on complete per Scott, excellent selection and unusually fresh, fine to very fine overall  
 ..... Est. \$1,400/1,800



515 ★ **1881, Victoria, 4d on 6d Black, Type 28, SG #42** *Photo* **\$140**  
 Setting 1, full o.g., "minor stain" spot on reverse, fresh on face, fine to very fine, signed Bloch, Sismondo (2013) cert. Scott #35 \$475. SG £750 ..... Est. \$200/250

519 ★ **Turks & Caicos Complete to 1945 GVI, SG #101-205** *Web* **\$140**  
 L.h. to o.g., fine to very fine. Scott #1-89 \$624. SG £600  
 ..... Est. \$200/250

Lot Description Start Bid Lot Description Start Bid

Uganda



520 (★) **1896, Typewritten Issue, "V.R.", 40c) Violet, SG #50** *Photo* **\$150**  
 Ungummed, framelines at left and right and small portion at bottom, very fine for this, Royal (1989) cert. Scott #50 \$850. SG £850 ..... Est. \$250/350



521 (★) **1896, Typewritten Issue, "V.R.", 50c) Violet, SG #51** *Photo* **\$180**  
 Ungummed, framelines at right and bottom, excellent color, very fine stamp, Rendon (1994) cert. Scott #51 \$750. SG £750 ..... Est. \$250/350



522 (★) **1896, Typewritten Issue, "V.R.", 60c) Violet, SG #52** *Photo* **\$350**  
 Ungummed, full framelines on the sides, partial at top and bottom, slightly trimmed at top right, completely sound, very fine for the issue, Sismondo (2009) cert. Scott #52 \$1,600. SG £1,600, *rarest value of the typewriter issue* .... Est. \$500/700



523 (★) **1896, Typewritten Issue, "V.R.", 100c) Violet, SG #53** *Photo* **\$350**  
 Ungummed, full framelines at right and bottom, scarce, very fine overall, signed Bloch. Scott #53 \$1,500. SG £1,500 ..... Est. \$500/700



524 ★ **1896, Typeset Issue, Overprinted "L", 1r Black, SG #75** *Photo* **\$100**  
 O.g. (typically slightly toned), marginal copy, very fine stamp, Sismondo (2013) cert. Scott #59 \$425. SG £375 ..... Est. \$150/200

525 ★ **Balance of Collection** *Web* **\$300**  
 1896 "New" Currency (unused) to 1902 issues, o.g. Victoria set, incl. SG#57 tete-beche, excellent colors on most, fine to very fine overall ..... Est. \$450/550

Zanzibar



526 ★ **1895, "Zanzibar" Overprinted in Blue on India 1a, SG #2** *Photo* **\$700**  
 O.g. (small h.r.), very fresh, fine to very fine. Scott #2 \$2,750. SG £3,000 ..... Est. \$1,000/1,200



527 ★ **1896, Provisional, 2 1/2 on 2a Pale Blue, SG #28** *Photo* **\$1,100**  
 Full o.g., "light toning in hinge area", pos. 2/2, fine to very fine and rare, Sismondo (2012) cert. Scott #31A \$5,000. SG £5,000, *32 exist* ..... Est. \$1,500/2,000

<i>Lot</i>	<i>Description</i>	<i>Start Bid</i>	<i>Lot</i>	<i>Description</i>	<i>Start Bid</i>
------------	--------------------	------------------	------------	--------------------	------------------



528 ★ **1908, 100r Black & Steel Blue, SG #244** *Photo* \$275  
 L.h., deep shade, fine to very fine. Scott #118 \$900. SG £1,100 ..... Est. \$350/400



532 ★ **Balance of Collection to 1936** *Photo* \$1,200  
 Excellent group rarely seen this extensive, full o.g. throughout with items or sets cat. to £500+, virtually complete from 1895-96 Overprint set except SG#28 (separate lot), #31, Dues complete except rarities, fine to very fine lot ..... Est. \$1,600/2,000



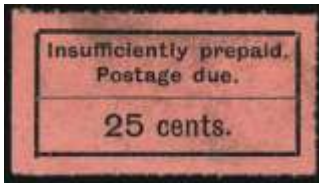
529 ★★ **1908, 200r Brown & Greenish Black, SG #245** *Photo* \$550  
 N.h., sharp color, fine to very fine. Scott #119 \$1,300. SG £1,500 ..... Est. \$800/1,000

*End of Sale - Thank You*



530 ★★ **1913, 200r Brown & Black, SG #260f** *Photo* \$350  
 N.h., excellent color, fine. Scott #140 \$1,000. SG £750 ..... Est. \$500/700

Please see our other APS auction catalog that also contains British Commonwealth.



531 (★) **Postage Due: 1927-30, 25c Black, SG #D13** *Photo* \$700  
 Unused, slight toning (mostly on reverse - not mentioned in cert.), fine and rare, Brandon (1998) cert. Scott #J8B \$3,250. SG £2,750 ..... Est. \$1,000/1,400